

Message from the President

JANU President, **Junichi Hamada**
(President, The University of Tokyo)



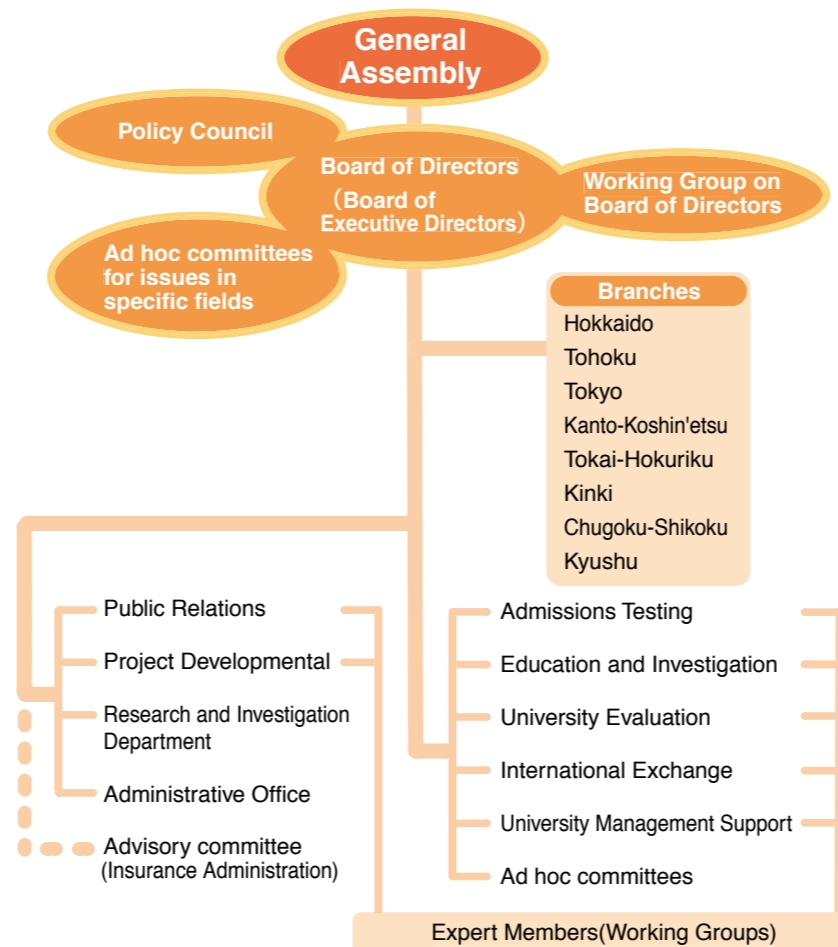
The 21st century is seeing the rise of a knowledge-based society, and higher education is playing a very important role in this context in terms of forming people's character as well as promoting national strategies, such as the development and promotion of society, the economy, and culture and the strengthening of national competitiveness in the international arena. Moreover, as global environmental problems, financial crises, and other world-scale issues become more serious, universities and other institutions of higher education are being called upon to contribute to the resolution of these issues and the achievement of sustainable development. For this reason, nations around the world are increasing their investment in higher education and endeavoring to heighten the international competitiveness of their institutes of higher education. Japan is the only member of the Organisation for Economic Co-operation and Development that is decreasing its investment in this area. This is shaking the foundations of Japan as a nation based on the creativity of science and technology. Further investment in higher education is needed for Japan to enjoy sustainable development in the future. In partnership with public and private university associations, the Japan Association of National Universities (JANU) is doing its utmost to expand public investment in higher education and enhance the tax system related to donations.

In the context of international competition, Japan's national universities need to serve both as national centers that engage in the international competition and as regional centers that contribute to the development of their local areas and society. Thanks to their outstanding research and their education programs inspired by that research, Japan's national universities produce outstanding human resources. Moreover, our national universities have become centers of local expertise and hubs for the training of high-level professionals that support their local area. Since their incorporation in particular, national universities have energetically engaged in various reforms. Drawing on their unique institutional philosophies and characteristics, they have created management strategies, revitalized their education and research activities, enhanced student services, and promoted industry-academia partnerships and contributions to their local areas. JANU will continue to clearly communicate the activities of universities to the people of Japan so that these energetic measures are not hindered by financial factors as the national universities seek to perform the key role of guaranteeing equal opportunity in education for all Japanese. By enhancing the understanding of government and citizens regarding national universities, we will strive to further develop these universities.

The economic situation is deteriorating, and a sense of insecurity and helplessness is spreading through society today. At such a time as this in particular, national universities must play a major role as hubs of knowledge in shedding light on the future. The 2009 fiscal year is the final year of national universities' stage 1 midterm goals and plans as well as the year for national universities to formulate their stage 2 midterm goals and plans and take a step toward the next phase of their development. In light of this, JANU will make additional efforts to make a further leap forward.

We welcome your continued support of our national universities throughout the country as well as your cooperation with the Japan Association of National Universities.

Organization Chart



(As of April, 1, 2009)

Governance

Board Members

- Members of the Board (President) :Junichi Hamada [President, The University of Tokyo]
- Members of the Board (Vice President) :Akihisa Inoue [President, Tohoku University]
- Members of the Board (Vice President) :Takuya Marumoto [President, Yamaguchi University]
- Members of the Board (Vice President) :Kiyokazu Washida [President, Osaka University]
- Members of the Board (Managing Director) :Kenji Hayata [Director-General, JANU]
- Member of the Board :Hiroshi Saeki [President, Hokkaido University]
- Member of the Board :Kazuhiko Sato [President, Muroran Institute of Technology]
- Member of the Board :Masahiko Endo [President, Hirosaki University]
- Member of the Board :Ryohei Miyata [President, Tokyo University of the Arts]
- Member of the Board :Nobuhiro Yamada [President, University of Tsukuba]
- Member of the Board :Kunio Suzuki [President, Yokohama National University]
- Member of the Board :Tokuso Saito [President, University of Toyama]
- Member of the Board :Michinari Hamaguchi [President, Nagoya University]
- Member of the Board :Tatsuo Naruse [President, Shiga University]
- Member of the Board :Hiroshi Matsumoto [President, Kyoto University]
- Member of the Board :Toshimasa Asahara [President, Hiroshima University]
- Member of the Board :Masahiko Ichii [President, Kagawa University]
- Member of the Board :Setsuo Arikawa [President, Kyushu University]
- Member of the Board :Shigeru Katamine [President, Nagasaki University]
- Auditor :Yasuhiko Washiyama [President, Tokyo Gakugei University]
- Auditor :Seiji Dezuka [Certified Public Accountant]

Assistant to President

- Yusuke Sagara [President, Kochi University]
- Teruo Shimomura [President, Kyushu Institute of Technology]

Activities

- **Proposals on national policies regarding higher education and the independent drafting of such policies**
 - Conducting investigative research and making policy proposals on issues relating to higher education and academic research
 - Conducting seminars on issues relating to higher education, academic research, and national universities
- **Improving the study environment for students to promote quality education, academic research, and social contribution in national universities**
 - Conducting investigative research and formulating guidelines on the current state of admissions to national universities
 - Gathering information and materials, conducting investigative research, and examining issues pertaining to high-quality education and research
 - Conducting investigative research, follow-up studies, verification and holding symposia relating to the evaluation of results and certification of national universities
 - Conducting and examining investigative research on policies for the promotion of government exchange programs and international student exchange programs of individual universities
- **Providing management support for national university corporations**
 - Understanding issues pertaining to the university management environment including personal, labor, finance, facilities and hospital affiliated with university, and making policy proposals to organizations relating to higher education.
 - Providing management support for national universities by providing information and materials
 - Organizing, implementing, and supporting training programs to improve the performance of executive officers and staff of national universities
 - Providing assistance and consulting services in risk management, administration, and improvement of comprehensive insurance for national university corporations
- **Promoting exchange projects based on international partnerships**
 - Promoting exchange projects with the various overseas presidents' associations through the participation of members
 - Pursuing international exchange with various overseas universities through partnerships and cooperation with public and private Japanese universities
 - Supporting other activities of international institutions in Japan related to international student exchange
- **Study and research activities**
 - Analyzing the current status and issues of national universities, conducting investigative research concerning their future, and gathering basic information and materials
- **Other activities geared to achieving JANU's goals**
 - Carrying out PR activities related to national universities and JANU
 - Conducting investigative research in specific fields requiring an immediate response
 - Providing support for the activities of each JANU branch in Japan