

Message from the President

JANU President, **Junichi Hamada**
(President, The University of Tokyo)

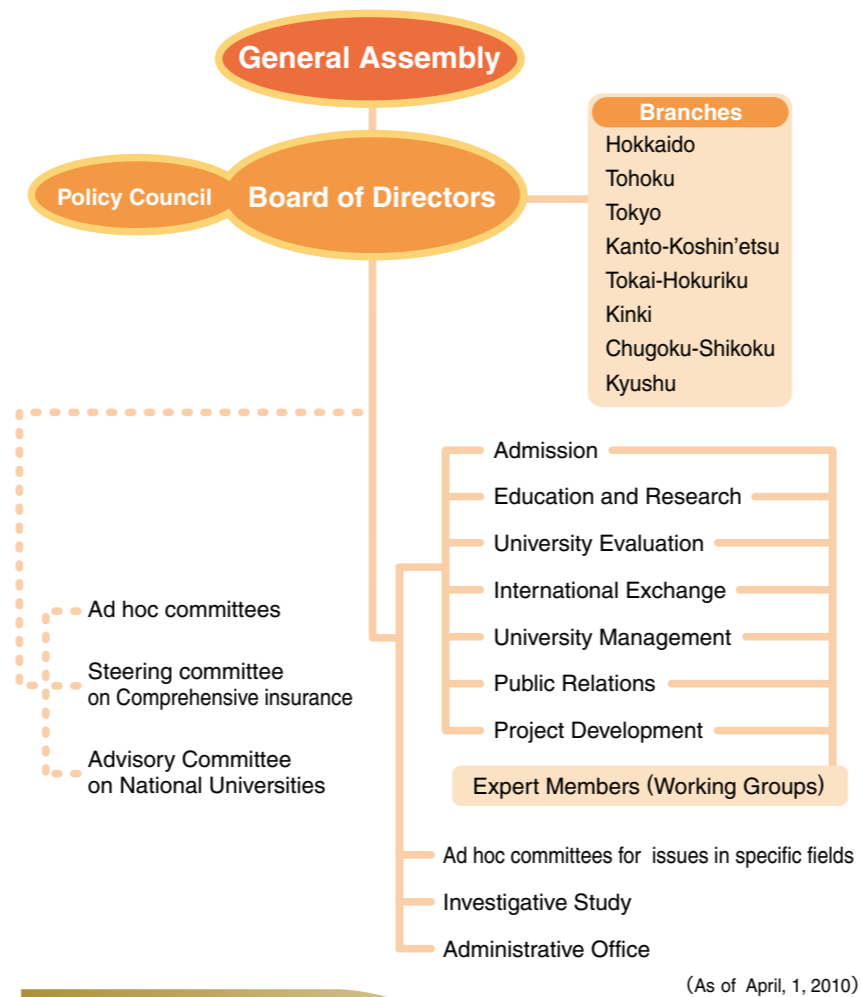


Without abundant natural resources on which to draw, Japan's intellectual resources have been the basis of our country's development to date. Standard of living, industrial development, and national power are directly and deeply related to higher education, and universities thus bear a public responsibility as key players in education and research. Given this deep relationship between higher education and national power, countries around the world are taking a long-term perspective and actively increasing investment in higher education. Yet Japan alone is reducing investment. As a percentage of GDP, our public expenditure on higher education is the lowest of all OECD member states and less than half the OECD average, a situation that threatens the very foundations of our society. Additional investment and a clear national strategic vision for the future of higher education are essential prerequisites for ensuring Japan's sustainable development in the knowledge-based society of the 21st century. In partnership with public and private university associations, the Japan Association of National Universities (JANU) seeks strongly to promote dialogue between academia and government based on the awareness that investment in universities is investment in the future.

In the current environment of international competition, Japan's national universities serve a dual role, as national centers that engage in competition at the global level, and as regional centers that contribute to the development of their local areas and society. Through outstanding research and education programs based on that research, Japan's national universities have produced talented individuals. At the same time, through relatively low tuition fees and by being located throughout the country, national universities have also played a key role in guaranteeing equal access to higher education, and acting as hubs for the training of skilled professionals supporting the regions. In this context, and particularly since incorporation, national universities have energetically engaged in a variety of reforms. While maintaining awareness of its unique institutional philosophy and individual character, each university has created new management strategies, revitalized its education and research activities, enhanced student services, and promoted industry-academia partnerships and contributions to regional society. It has been suggested, however, that society is not sufficiently aware of the many outstanding initiatives promoted by national universities. JANU will continue to strive to improve transparency in the activities of national universities, and by enhancing the understanding of government and society, further develop the educational activities of national universities.

As the first year of their stage two midterm goals and plans, the 2010/11 academic year is a further step toward the next phase of development for national universities. While continuing our unflagging efforts for reform, Japan's national universities, as hubs of knowledge, will promote activities to provide humankind with a reliable compass to the future. As conditions surrounding Japan's national universities become increasingly unfavorable, we urge your continued support for Japan's national universities and your warm cooperation with the Japan Association of National Universities.

Organization Chart



Governance

Board Members

- Members of the Board (President) :Junichi Hamada 【President, The University of Tokyo】
- Members of the Board (Vice President) :Akihisa Inoue 【President, Tohoku University】
- Members of the Board (Vice President) :Kiyokazu Washida 【President, Osaka University】
- Members of the Board (Vice President) :Hiroki Yoshida 【President, Kagoshima University】
- Members of the Board (Senior Managing Director) :Tomoyuki Nogami 【Honorary Professor, Kobe University】
- Members of the Board (Managing Director) :Kenji Hayata 【Director-General, JANU】
- Member of the Board :Hiroshi Saeki 【President, Hokkaido University】
- Member of the Board :Hideyuki Nagasawa 【President, Obihiro University of Agriculture and Veterinary Medicine】
- Member of the Board :Akio Yuki 【President, Yamagata University】
- Member of the Board :Ryohei Miyata 【President, Tokyo University of the Arts】
- Member of the Board :Nobuhiro Yamada 【President, University of Tsukuba】
- Member of the Board :Yasushi Saito 【President, Chiba University】
- Member of the Board :Fumitake Gejyo 【President, Niigata University】
- Member of the Board :Shin-ichi Nakamura 【President, Kanazawa University】
- Member of the Board :Michinari Hamaguchi 【President, Nagoya University】
- Member of the Board :Hiroshi Matsumoto 【President, Kyoto University】
- Member of the Board :Hiroki Yamamoto 【President, Shimane University】
- Member of the Board :Toshimasa Asahara 【President, Hiroshima University】
- Member of the Board :Yasunobu Yanagisawa 【President, Ehime University】
- Member of the Board :Setsuo Arikawa 【President, Kyushu University】
- Auditor :Sawako Hanyu 【President, Ochanomizu University】
- Auditor :Akio Nagao 【President, Osaka Kyoiku University】

Assistant to President

- Noboru Yoshimura 【President, Akita University】
- Masaji Matsuyama 【President, Tokyo University of Marine Science and Technology】
- Takuya Marumoto 【President, Yamaguchi University】

Activities

● Activities to promote high quality education, academic research, and social contribution for national universities

- Conducting investigative research and formulating guidelines on the current state of admissions to national universities
- Gathering information and materials, conducting investigative research, and examining issues pertaining to high-quality education and research
- Conducting investigative research, follow-up studies, verification and holding symposia relating to the evaluation of results and certification of national universities
- Conducting and examining investigative research on policies for the promotion of government exchange programs and international student exchange programs of individual universities

● Studies for policy proposal regarding higher education and academic research in Japan and the independent drafting of such policies

- Conducting investigative research and making policy proposals on issues relating to higher education and academic research
- Conducting seminars on issues relating to higher education, academic research, and national universities
- Analyzing the current status and issues of national universities, conducting investigative research concerning their future, and gathering basic information and materials

● Promoting exchange projects based on international partnerships

- Promoting exchange projects with the various overseas presidents' associations through the participation of members
- Pursuing international exchange with various overseas universities through partnerships and cooperation with public and private Japanese universities
- Supporting other activities of international institutions in Japan related to international student exchange

● Providing management support for national university corporations

- Understanding issues pertaining to the university management environment including personal, labor, finance, facilities and hospital affiliated with university, and making policy proposals to organizations relating to higher education.
- Providing management support for national universities by providing information and materials
- Organizing, implementing, and supporting training programs to improve the performance of executive officers and staff of national universities and related organizations
- Carrying out PR activities related to national universities and JANU
- Providing support for the activities of each JANU branch in Japan
- Conducting investigative research in specific fields requiring an immediate response

● Other activities geared to achieving JANU's goals

- Providing assistance and consulting services in risk management, administration, and improvement of comprehensive insurance for national university corporations