

## Message from President

JANU President, **Hiroshi Komiyama**  
(President, The University of Tokyo)

As global environmental issues and other world-scale problems grow more serious, the members of the international community are promoting cooperative efforts to ensure the future development of society. At the same time, however, because institutions of higher education are the source of national competitiveness, international competition among such institutions has sharply increased as each nation seeks to continue to advance itself amid these conditions of limitation.



The Japanese government has embarked on broad deliberations and reforms for its higher education. Along with these government efforts, individual national universities have endeavored to introduce reforms to enable themselves to offer even higher-quality education and research. As reform of the national university system progresses further, each university is expected to develop highly effective and original strategies accord with its ideals and character.

In this context of addressing international problems and engaging in friendly inter-university competition, Japan's national universities should play two roles: to serve as national centers that compete on a global level and to serve as regional centers that contribute to the revitalization of the local community. Our national universities have always offered world-class education and research. They have also played a central role in fostering the development of human resources with high-level specializations to support the regional community, and thus served as centers of regional knowledge and wisdom. With the understanding and support of the Japanese people, national universities have performed both roles and have made important contributions to our national development.

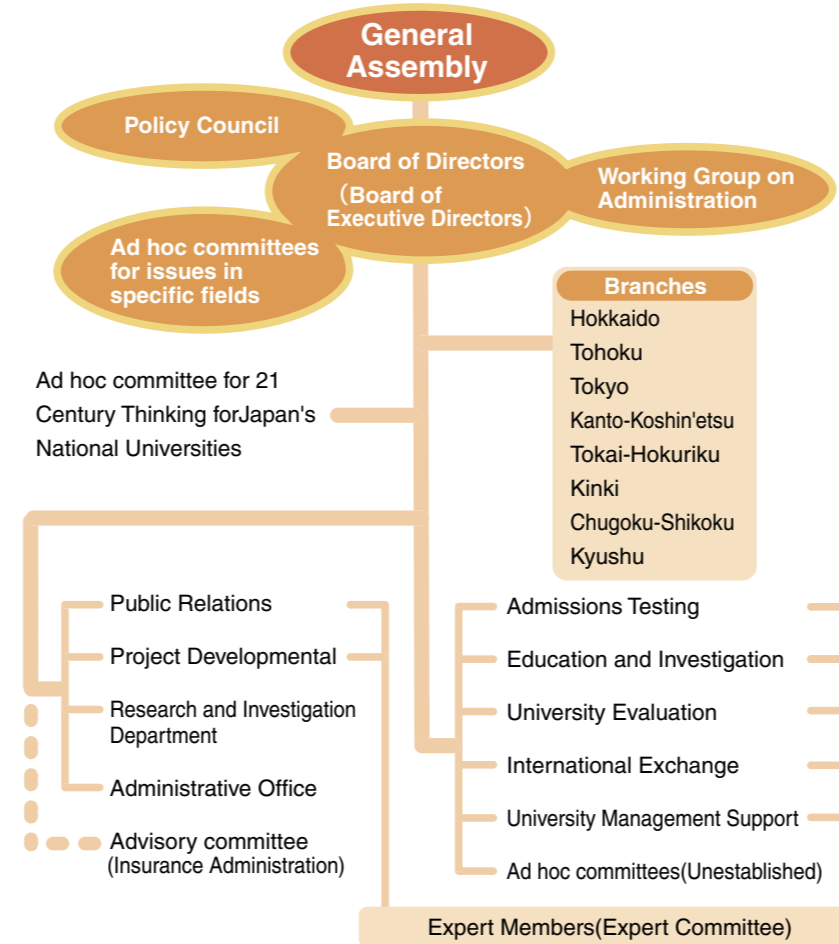
The mission of national universities in Japan today is to fulfill these roles on an even higher level. The social climate has grown harsh, however, for fulfilling these responsibilities. Newspaper commentaries and statements made by experts from industry and other sectors as well, indicate that society does not fully recognize the activities of our national universities.

Furthermore, although Japan's investment in higher education is small in absolute terms compared with that of other countries, public disbursement of basic expenditure to national universities and public subsidies to private universities are on a downward annual trend. Because many countries have increased their investment in higher education to enhance their nation's international competitiveness, the decrease in public investment in higher education in Japan has an enormous impact on our national universities.

The Japan Association of National Universities (JANU) sets its mission to fully support our national universities in the efforts to promote the development of human resources and academic research in our nation, and JANU, with this mission in mind, is committed to taking more action to overcome the issues confronting our national universities. JANU supports Japan's national universities in their education and research efforts and works to help the university contributions to society more visible. Moreover, JANU provides full backing to each national university corporation's efforts to develop more sophisticated university management strategies and to reform their education and research. Through such efforts, JANU is committed to doing its utmost to promote the further development of higher education in Japan.

We welcome your continued support of our national universities as well as your additional guidance and cooperation with the Japan Association of National Universities.

## Organization Chart



## Governance

(As of December, 1, 2007)

### Board Members

|   |   |
|---|---|
| Members of the Board (President)                | :Hiroshi Komiyama [President, The University of Tokyo]                      |
| Members of the Board (Vice President)           | :Tisato Kajiyama [President, Kyushu University]                             |
| Members of the Board (Vice President)           | :Akihisa Inoue [President, Tohoku University]                               |
| Members of the Board (Senior Managing Director) | :Hideo Akaiwa [Honorary Professor, Gunma University]                        |
| Members of the Board (Managing Director)        | :Kenji Hayata [Director-General, JANU]                                      |
| Member of the Board                             | :Hiroshi Saeki [President, Hokkaido University]                             |
| Member of the Board                             | :Kenji Homma [President, Hokkaido University of Education]                  |
| Member of the Board                             | :Kenichi Hirayama [President, Iwate University]                             |
| Member of the Board                             | :Rikuo Takai [President, Tokyo University of Marine Science and Technology] |
| Member of the Board                             | :Yoichi Iwasaki [President, University of Tsukuba]                          |
| Member of the Board                             | :Mamoru Suzuki [President, Gunma University]                                |
| Member of the Board                             | :Akira Hasegawa [President, Niigata University]                             |
| Member of the Board                             | :Shin-ichi Hirano [President, Nagoya University]                            |
| Member of the Board                             | :Yujiro Hayashi [President, Kanazawa University]                            |
| Member of the Board                             | :Kazuo Oike [President, Kyoto University]                                   |
| Member of the Board                             | :Kiyokazu Washida [President, Osaka University]                             |
| Member of the Board                             | :Tomoyuki Nogami [President, Kobe University]                               |
| Member of the Board                             | :Toshimasa Asahara [President, Hiroshima University]                        |
| Member of the Board                             | :Toshihiro Aono [President, The University of Tokushima]                    |
| Member of the Board                             | :Tatsuro Sakimoto [President, Kumamoto University]                          |
| Auditor   | :Yoshihiro Iida [President, Yokohama National University]                   |
| Auditor   | :Seiji Dezuka [Toyo Audit Corporation]                                      |

### Assistant to President

|   |
|---|
| Yusuke Sagara [President, Kochi University]                 |
| Teruo Shimomura [President, Kyushu Institute of Technology] |

## Activities

### ● Proposals on national policies regarding higher education and the independent drafting of such policies

- Conducting investigative research and making policy proposals on issues relating to higher education and academic research
- Submitting requests for consultation, reform, and revisions with regard to the administration of national university corporations and financial support
- Conducting seminars on issues relating to higher education, academic research, and national universities

### ● Improving the study environment for students to promote quality education, academic research, and social contribution in national universities

- Conducting investigative research and formulating guidelines on the current state of admissions to national universities
- Gathering information and materials, conducting investigative research, and examining issues pertaining to high-quality education and research
- Conducting investigative research, follow-up studies, verification and holding symposia relating to the evaluation of results and certification of national universities
- Conducting and examining investigative research on policies for the promotion of government exchange programs and international student exchange programs of individual universities

### ● Providing management support for national university corporations

- Examining, assisting, collecting, and providing information on improvement of the university management environment, including personnel, labor, finance, facilities and hospital management
- Providing management support for national universities by providing information and materials
- Organizing, implementing, and supporting training programs to improve the performance of executive officers and staff of national universities
- Providing assistance and consulting services in risk management, administration, and improvement of comprehensive insurance for national university corporations

### ● Promoting exchange projects based on international partnerships

- Promoting exchange projects with the various overseas presidents' associations through the participation of members
- Pursuing international exchange with various overseas universities through partnerships and cooperation with public and private Japanese universities
- Supporting other activities of international institutions in Japan related to international student exchange

### ● Study and research activities

- Analyzing the current status and issues of national universities, conducting investigative research concerning their future, and gathering basic information and materials

### ● Other activities geared to achieving JANU's goals

- Carrying out PR activities related to national universities and JANU
- Conducting investigative research in specific fields requiring an immediate response
- Providing support for the activities of each JANU branch in Japan