

Message from the President

JANU President, **Hiroshi Komiyama**
(President, The University of Tokyo)



Today universities and other institutions of higher education face fierce competition internationally, and one aspect of this is the competition among nations around the world to develop human resources. It is crucial that Japan's universities-national, municipal, prefectural, and private universities-further refine their capabilities as educational institutions, and the national universities are prepared to play the key role in this endeavor. While serving both as national centers that lead international competition and as regional centers that contribute to the revitalization of local areas, each national university will play a unique function in the sphere of education.

Thanks to their outstanding research and their education programs inspired by that research, Japan's national universities rank among the world's best. Moreover, they serve as centers of local expertise and hubs for the training of high-level professionals that support their local area. To continue to play these roles, our national universities must promote full-scale efforts focused on self-initiated reform based on a sense of responsibility and an awareness of their position as national universities.

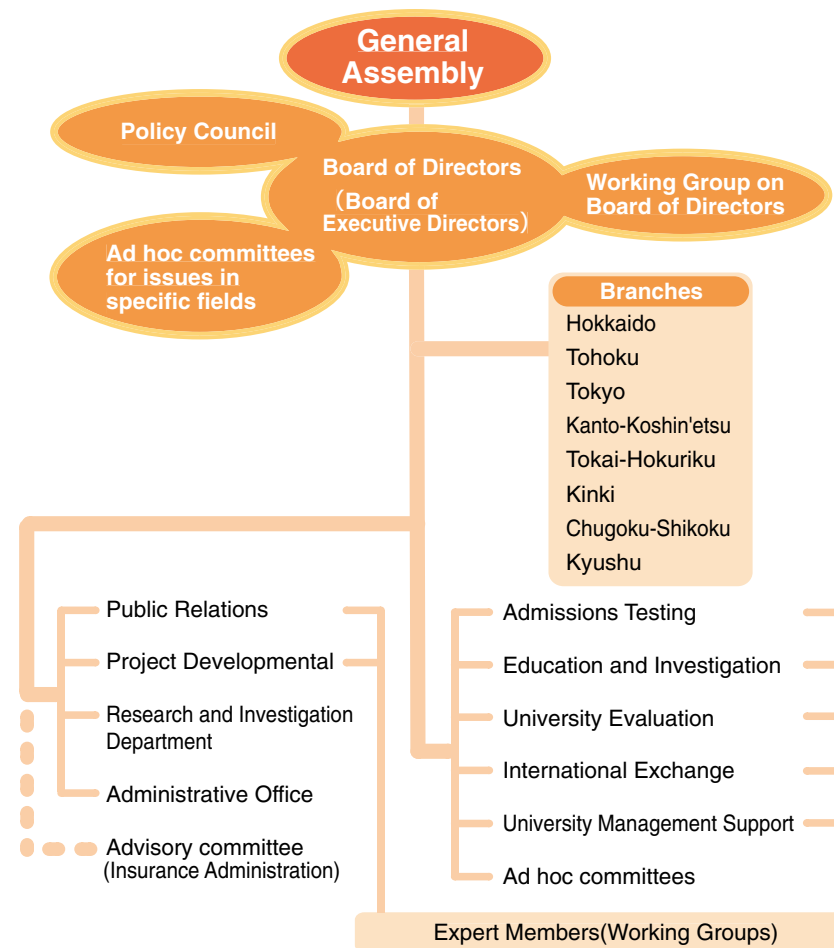
The Japanese people are not aware, however, of the efforts the national universities are making. The national universities will not progress unless they clearly communicate their efforts to the people of Japan so that they know what their national universities are doing today. With an eye on ensuring clear communication, national universities will place emphasis on informing society about their endeavors.

In addition to continuing the activities they have engaged in to date, it is now critical that national universities build a stable financial base. While requesting the national government to guarantee the basic expenses for their activities as universities, national universities are also being called to take self-help measures and not just rely on the government. To do this, social systems and particularly the taxation system must be reformed so that the national universities' efforts can bear fruit. Joining hands with private universities, we have been calling upon the government since last fiscal year to institute a tax deduction for donations related to culture and education. In addition to this, we are compiling national universities' concrete requests for system reform and submitting them to the government. Currently government expenditure for higher education stands at about two trillion yen in Japan. We have set the target of five trillion yen or one percent of the nation's gross domestic product, a percentage comparable to that in other member countries of the Organisation for Economic Co-operation and Development. In these ways, we plan to do everything we can to create a new framework that supports financing for Japan's higher education.

Our national universities must do their utmost to promote the development of human resources and academic research in our nation. With this mission in mind, the Japan Association of National Universities (JANU) is committed to taking more action to comprehensively support the enhancement of management and the reform of education and research at our individual national university corporations. Through these activities, JANU will work to advance higher education in Japan.

We welcome your continued support of our national universities throughout the country as well as your cooperation with the Japan Association of National Universities.

Organization Chart



(As of April, 1, 2008)

Governance

Board Members

Members of the Board (President) :Hiroshi Komiyama [President, The University of Tokyo]
 Members of the Board (Vice President) :Tisato Kajiyama [President, Kyushu University]
 Members of the Board (Vice President) :Akihisa Inoue [President, Tohoku University]
 Members of the Board (Vice President) :Takuya Marumoto [President, Yamaguchi University]
 Members of the Board (Managing Director) :Kenji Hayata [Director-General, JANU]
 Member of the Board :Hiroshi Saeki [President, Hokkaido University]
 Member of the Board :Kenichi Matsuoka [President, Muroran Institute of Technology]
 Member of the Board :Masahiko Endo [President, Hirosaki University]
 Member of the Board :Ryohei Miyata [President, Tokyo University of the Arts]
 Member of the Board :Yoichi Iwasaki [President, University of Tsukuba]
 Member of the Board :Mamoru Suzuki [President, Gunma University]
 Member of the Board :Yoshihiro Iida [President, Yokohama National University]
 Member of the Board :Tokuso Saito [President, University of Toyama]
 Member of the Board :Shin-ichi Hirano [President, Nagoya University]
 Member of the Board :Tatsuo Naruse [President, Shiga University]
 Member of the Board :Kazuo Oike [President, Kyoto University]
 Member of the Board :Kiyokazu Washida [President, Osaka University]
 Member of the Board :Masahiko Ichii [President, Kagawa University]
 Member of the Board :Hiroshi Saito [President, Nagasaki University]
 Auditor :Yasuhiko Washiyama [President, Tokyo Gakugei University]
 Auditor :Seiji Dezuka [Toyo Audit Corporation]

Assistant to President

Tomoyuki Nogami [President, Kobe University]
 Yusuke Sagara [President, Kochi University]
 Teruo Shimomura [President, Kyushu Institute of Technology]

Activities

Proposals on national policies regarding higher education and the independent drafting of such policies

- Conducting investigative research and making policy proposals on issues relating to higher education and academic research
- Conducting seminars on issues relating to higher education, academic research, and national universities

Improving the study environment for students to promote quality education, academic research, and social contribution in national universities

- Conducting investigative research and formulating guidelines on the current state of admissions to national universities
- Gathering information and materials, conducting investigative research, and examining issues pertaining to high-quality education and research
- Conducting investigative research, follow-up studies, verification and holding symposia relating to the evaluation of results and certification of national universities
- Conducting and examining investigative research on policies for the promotion of government exchange programs and international student exchange programs of individual universities

Providing management support for national university corporations

- Understanding issues pertaining to the university management environment including personal, labor, finance, facilities and hospital affiliated with university, and making policy proposals to organizations relating to higher education.
- Providing management support for national universities by providing information and materials
- Organizing, implementing, and supporting training programs to improve the performance of executive officers and staff of national universities
- Providing assistance and consulting services in risk management, administration, and improvement of comprehensive insurance for national university corporations

Promoting exchange projects based on international partnerships

- Promoting exchange projects with the various overseas presidents' associations through the participation of members
- Pursuing international exchange with various overseas universities through partnerships and cooperation with public and private Japanese universities
- Supporting other activities of international institutions in Japan related to international student exchange

Study and research activities

- Analyzing the current status and issues of national universities, conducting investigative research concerning their future, and gathering basic information and materials

Other activities geared to achieving JANU's goals

- Carrying out PR activities related to national universities and JANU
- Conducting investigative research in specific fields requiring an immediate response
- Providing support for the activities of each JANU branch in Japan