

Message from the President

JANU President, **Junichi Hamada**
(President, The University of Tokyo)



National universities serve a dual role, as national centers that compete at the global level, and as regional centers that contribute to the development of their community and nation. Outstanding research at Japan's national universities and education programs based on that research have produced talented human resources. At the same time, with relatively low tuition fees and being located throughout the country, national universities have also played a key role in guaranteeing equal access to higher education, and as hubs for the training of skilled professionals in each region.

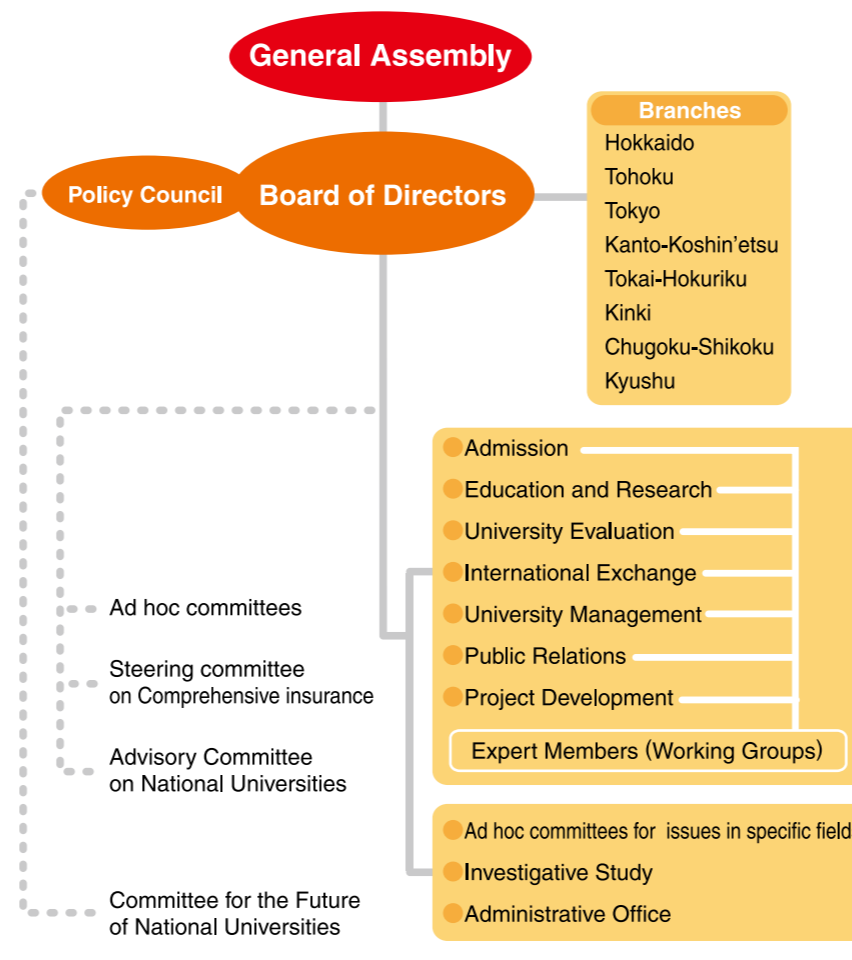
A number of important facts have come to light from looking at the validation results of Stage 1 of the midterm goals period, compiled by the Japan Association of National Universities this March. Since their restructuring as national university corporations, each university has aimed to recreate itself as an individual university with a unique presence and to provide not only a high quality education that draws on its uniqueness, but also further promote basic and fundamental research activities. In addition, each university has its own unique strategies to vitalize closer industry-academia-government links with local corporations and regional administrative bodies; to expand international exchange by, for example, signing agreements with overseas universities or increasing their acceptance of international students; to contribute to medical health by being, thanks to its university hospital, the final guarantee of treatment in each region; and to actively propagate information to society as an "open university." These and other approaches that put to work the special features of a national university corporation are being vigorously carried forward under the leadership of each university president.

Despite these efforts, as a percentage of GDP, our public expenditure on higher education is the lowest of all OECD member states and less than half the OECD average, a situation that deeply affects the stability not only of national university operation but of the very foundations of our society. In partnership with public and private university associations, we strongly seek to promote dialogue between academia and government based on the awareness that national investment in universities is investment in the future.

In the wake of the Great East Japan Earthquake, university research and education is widely expected to form one of the pillars of restoration of disaster area and Japan's revitalization. We also hope to further enhance the functions of national universities in the face of growing international competition while other countries promote their education and research as a key policy. To that end, we will carry out unceasing efforts to reform management and increase the transparency of education, research, and social contributions at national universities, engaging with stakeholders and citizens in order to properly fulfill our duty as national universities.

As conditions surrounding Japan's national universities become ever tighter, we urge your continued support for Japan's national universities and your firm cooperation with the Japan Association of National Universities.

Organization Chart



Governance

(As of June, 22, 2011)

Board Members

Members of the Board (President) :Junichi Hamada [President, The University of Tokyo]

Members of the Board (Vice President) :Akihisa Inoue [President, Tohoku University]
:Hiroshi Matsumoto [President, Kyoto University]
:Susumu Kagawa [President, The University of Tokushima]

Members of the Board (Senior Managing Director) :Tomoyuki Nogami [Honorary Professor, Kobe University]

Members of the Board (Managing Director) :Kenji Hayata [Director-General, JANU]

Member of the Board :Hiroshi Saeki [President, Hokkaido University]
:Kenji Homma [President, Hokkaido University of Education]
:Kousuke Takahashi [President, Miyagi University of Education]
:Ryohei Miyata [President, Tokyo University of the Arts]
:Nobuhiro Yamada [President, University of Tsukuba]
:Yasushi Saito [President, Chiba University]
:Fumitake Gejyo [President, Niigata University]
:Masaru Fukuda [President, University of Fukui]
:Michinari Hamaguchi [President, Nagoya University]
:Kiyokazu Washida [President, Osaka University]
:Hideki Fukuda [President, Kobe University]
:Kiyoshi Morita [President, Okayama University]
:Setsuo Arikawa [President, Kyushu University]
:Isao Taniguchi [President, Kumamoto University]

Auditor :Sawako Hanyu [President, Ochanomizu University]
:Hiroki Yoshida [President, Kagoshima University]

Assistant to President

Masaji Matsuyama [President, Tokyo University of Marine Science and Technology]
Minoru Takahashi [President, Nagoya Institute of Technology]
Hiroki Yamamoto [President, Shimane University]
Toshimasa Asahara [President, Hiroshima University]

Activities

● Activities to promote high quality education, academic research, and social contribution for national universities

- Conducting investigative research and formulating guidelines on the current state of admissions to national universities
- Gathering information and materials, conducting investigative research, and examining issues pertaining to high-quality education and research
- Conducting investigative research and verification relating to evaluation of the results and certification of national universities
- Conducting and examining investigative research on policies for the promotion of government exchange programs and international student exchange programs of individual universities
- Promoting exchange projects with the various overseas presidents' associations through member participation

● Studies for policy proposal regarding higher education and academic research in Japan and the independent drafting of such policies

- Conducting investigative research and making policy proposals on issues relating to higher education and academic research
- Conducting seminars on issues relating to higher education, academic research, and national universities
- Examining the roles that national universities are required to play and seeking to enhance their unique functions
- Analyzing the current status and issues of national universities, conducting investigative research concerning their future, and gathering basic information and materials

● Promoting exchange projects based on international partnerships

- Pursuing international exchange with various overseas universities through partnerships and cooperation with public and private Japanese universities
- Supporting other activities of international institutions in Japan related to international student exchange

● Providing management support for national university corporations

- Understanding issues pertaining to the university management environment including personal, labor, finance, facilities and hospital affiliated with university, and making policy proposals to organizations relating to higher education.
- Providing management support for national universities by providing information and materials
- Organizing, implementing, and supporting training programs to improve the performance of executive officers and staff of national universities and related organizations
- Carrying out PR activities related to national universities and JANU
- Providing support for the activities of each JANU branch in Japan
- Conducting investigative research in specific fields requiring an immediate response

● Other activities geared to achieving JANU's goals

- Providing assistance and consulting services in risk management, administration, and improvement of comprehensive insurance for national university corporations