

## Greeting from the President

JANU President, **Masuo Aizawa**  
(President of Tokyo Institute of Technology)

With the dawn of the 21st century, Japan has embarked on a wide range of judicial and administrative reforms. Higher education, too, has been subject to sweeping changes. In the short time since 1998, when the former University Council issued its report “A Vision of Universities in the 21st Century and Reform Measures,” the national universities have been turned into corporations, professional school programs have been instituted, and ex post facto check system by an independent evaluation organization to evaluate university was adopted. And last January, the Central Council for Education issued a report titled “The Future of Higher Education in Japan,” which offered up a clear vision for higher education in a knowledge-based society.



In the midst of these wholesale changes in the circumstances and climate surroundings of higher education in Japan, the reorganization of the national universities into corporations—the most dramatic reform of the higher education system since the Meiji era—triggered much debate both inside and outside the national universities as to the raison d'être of these institutions under the new system. The recent report of the Central Council for Education outlined a mission for the national universities along with the nation's expectations of these institutions. Nonetheless, it will be no easy matter defining a unique role for national universities, as distinguished from private and public universities, in the performance of these functions.

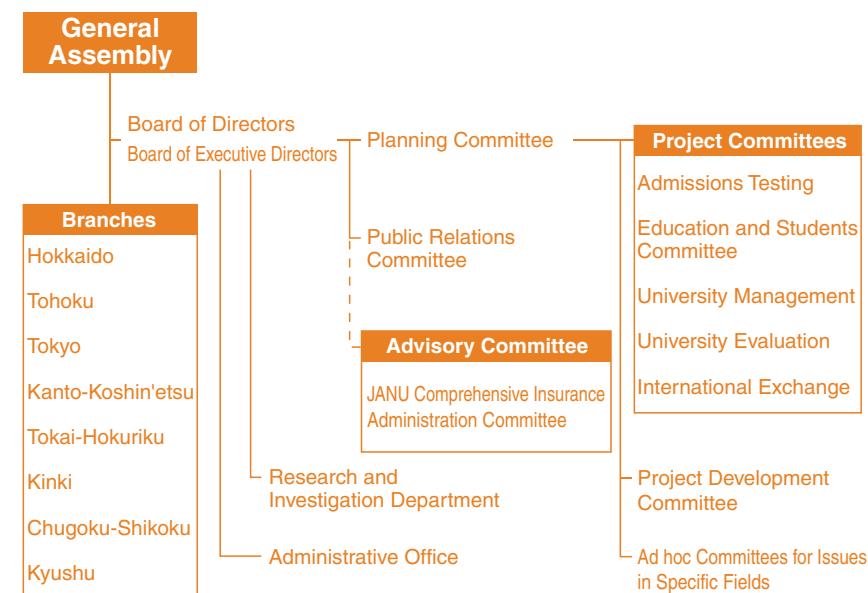
Keeping in mind the role that the Central Council for Education has delineated for the national universities, we must focus above all on the fact that these universities, established by the state and nurtured with national funding ever since the Meiji era, not only possess a vast store of knowledge in a wide variety of academic fields but also retain a tremendous potential for education and research. The national universities remain vital national intellectual assets in this century. Utilization of the know-how and knowledge of these centers of learning, for the development of outstanding human resources and among other things, remains vital to the future of this country.

It has fallen to me to take on the job of president of the Japan Association of National Universities and the responsibilities this post entails. The mission of this association is to support qualitative enhancement of the diverse undertakings of these intellectual property, the national universities, including education, research, and activities for the betterment of society. In the year since the corporatization of the national universities, the attitude of these institutions to the government has already altered substantially. At the same time, each individual university is becoming increasingly independent and entering a new stage of development as it makes the most of its own individual identity and distinctive character.

Facing all these changes head on, and with the support and understanding of people from all sectors of society, I am determined to help build new partnerships and cooperative relationships with government that preserve a healthy degree of tension, to foster a flexible network between national universities predicated on respect for one another's individuality and circumstances, and to do my utmost to support the development of the national universities and higher education in Japan.

On behalf of the Japan Association of National Universities, I thank everyone for your continued support and guidance.

## Organization Chart



## Governance

Members of the Board (President) : Masuo Aizawa [President, Tokyo Institute of Technology]

Members of the Board (Vice President): Hiroshi Komiyama [President, The University of Tokyo]

Members of the Board (Vice President): Tisato Kajiyama [President, Kyushu University]

Members of the Board (Senior Managing Director)  
: Minoru Matsuo [Honorary Professor, Nagoya University]

Members of the Board (Managing Director): Teruo Morohashi [Director-General, JANU]

Member of the Board: Mutsuo Nakamura [President, Hokkaido University]

Member of the Board: Takashi Yoshimoto [President, Tohoku University]

Member of the Board: Akira Miura [President, Akita University]

Member of the Board: Setsuho Ikehata [President, Tokyo University of Foreign Studies]

Member of the Board: Takehiko Sugiyama [President, Hitotsubashi University]

Member of the Board: Yoichi Iwasaki [President, University of Tsukuba]

Member of the Board: Toyoki Kozai [President, Chiba University]

Member of the Board: Yujiro Hayashi [President, Kanazawa University]

Member of the Board: Shin-ichi Hirano [President, Nagoya University]

Member of the Board: Kazuo Oike [President, Kyoto University]

Member of the Board: Hideo Miyahara [President, Osaka University]

Member of the Board: Takayuki Nose [President, Tottori University]

Member of the Board: Yusuke Sagara [President, Kochi University]

Member of the Board: Tatsuro Sakimoto [President, Kumamoto University]

Member of the Board: Yukihiko Nagata [President, Kagoshima University]

Auditor: Yoshihiro Iida [President, Yokohama National University]

Auditor: Seiji Dezuka [Toyo Audit Corporation]

## Activities

### Promoting quality education, academic research, and social contribution in national universities

- Conducting investigative research and formulating guidelines on the current state of admissions into national universities
- Conducting investigative research and making proposals on the system of admissions
- Recommending and taking measures for improving the studying environment for students
- Conducting investigative research to improve undergraduate education in individual faculties
- Conducting investigative research and responding to issues pertaining to university evaluation
- Conducting follow-up studies and verification and holding symposia relating to completed evaluations

### Conducting investigative research for proposals on national policy regarding higher education and academic research, and drafting such policies independently

- Conducting investigative research and making policy proposals on issues relating to higher education and academic research
- Conducting seminars on issues relating to higher education and academic research
- Submitting requests for consultation, reform, and revisions with regard to the system, mechanisms, and administration of national university corporations
- Securing and responding to funding for national universities
- Conducting and providing surveys and studies on basic issues concerning the national universities
- Gathering, analyzing, and providing information and materials pertaining to quality education and research

### Pursuing exchange projects based on international partnerships

- Conducting investigative research, examining, and implementing strategic modes of international exchange that preserve independence
- Pursuing international exchange with various overseas universities through partnerships and cooperation with public and private Japanese universities
- Supporting other activities within Japan relative to international exchange

### Providing management support for national university corporations

- Examining, assisting, collecting, and providing information on improvement of the university management environment, including personnel, labor, finance, and facilities
- Organizing, implementing, and supporting training programs to improve the performance of officers and staff of national universities
- Providing assistance and consulting services in risk management and improvement of comprehensive insurance for national university corporations

### Other activities geared to achieving JANU's goals

- Carrying out PR activities relating to the national universities
- Gathering and providing information on national universities
- Providing support for the activities of JANU branches throughout Japan