

Greeting from the President

JANU Presedient, **Masuo Aizawa**  
(President of Tokyo Institute of Technology)



In recent years, higher education in Japan has embarked on a wide range of reforms. These include the fundamental reform of management systems for national universities, which were turned into corporations in 2004; quality assurance; enhancement of international competitiveness in education and research; and the promotion of collaboration between universities and industry.

In January last year, the Central Council for Education issued a report titled "The Future Vision of Higher Education in Japan," and last September they released a report titled "Graduate School Education in the New Century: Moving Toward Internationally Attractive Initiatives for Graduate Education." Reforms of the national university system have been promoted through efforts such as these, and effective strategies for individual universities should be developed further.

Since they became corporations, national universities have made the most of their corporate status to promote various reforms, according to their ideals and characteristics. These reforms include the establishment of a university management strategy, activation of education and research, improvement of support for students, promotion of university-industry collaboration, and enhancement of contributions to regional society.

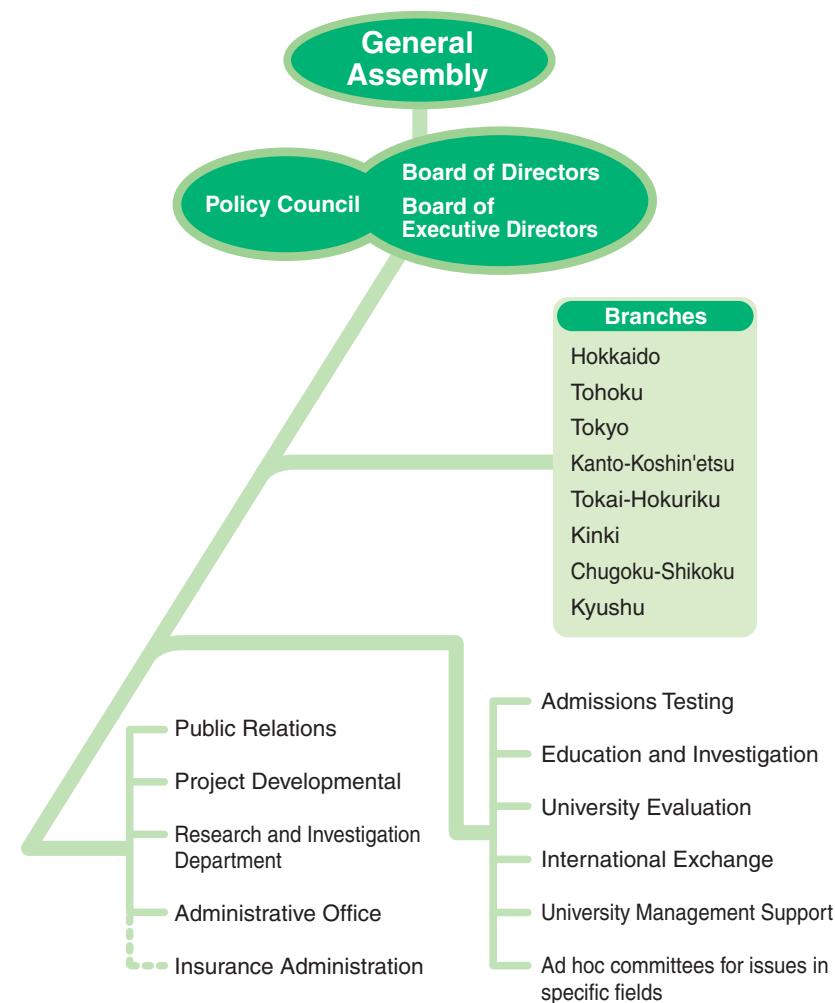
The status of national university management in 2004, when the national universities were first turned into corporations, was evaluated by the Evaluation Committee for National University Corporations. A settlement of accounts was approved by the Minister of Education, Culture, Sports, Science and Technology and the results of the evaluation and financial statement were disclosed for all stakeholders.

Individually, national universities should use their vast store of knowledge accumulated in a wide variety of academic fields since the Meiji Era. They should play a central role in the knowledge-based society of the 21<sup>st</sup> century in promoting the development of outstanding human resources and respond to the expectations and demands of contemporary Japanese society.

As the association of national universities, JANU supports this mission and that of implementing environmental support for the enhancement of education and research of high efficiency and high quality. We can assume that the future will present many challenges to higher education in Japan, but with the support and understanding of people from all sectors of society, JANU will do its utmost to promote the development of national universities and higher education in Japan.

On behalf of the Japan Association of National Universities, I thank you all for your continued support and guidance.

Organization Chart



Governance

- Members of the Board (Presedient) :Masuo Aizawa [President, Tokyo Institute of Technology]
- Members of the Board (Vice President) :Hiroshi Komiyama [President, The University of Tokyo]
- Members of the Board (Vice President) :Tisato Kajiyama [President, Kyushu University]
- Members of the Board (Senior Managing Director)  
:Hideo Akaiwa [Honorary Professor, Gunma University]
- Members of the Board (Managing Director):Teruo Morohashi [Director-General, JANU]
- Member of the Board :Mutsuo Nakamura [President, Hokkaido University]
- Member of the Board :Noriaki Murayama [President, Hokkaido University of Education]
- Member of the Board :Kenichi Hirayama [President, Iwate University]
- Member of the Board :Takashi Yoshimoto [President, Tohoku University]
- Member of the Board :Yoichi Iwasaki [President, University of Tsukuba]
- Member of the Board :Mamoru Suzuki [President, Gunma University]
- Member of the Board :Akira Hasegawa [President, Niigata University]
- Member of the Board :Shin-ichi Hirano [President, Nagoya University]
- Member of the Board :Yujiro Hayashi [President, Kanazawa University]
- Member of the Board :Kazuo Oike [President, Kyoto University]
- Member of the Board :Hideo Miyahara [President, Osaka University]
- Member of the Board :Tomoyuki Nogami [President, Kobe University]
- Member of the Board :Taizo Muta [President, Hiroshima University]
- Member of the Board :Toshiro Aono [President, The University of Tokushima]
- Member of the Board :Tatsuro Sakimoto [President, Kumamoto University]
- Auditor :Yoshihiro Iida [President, Yokohama National University]
- Auditor :Seiji Dezuka [Toyo Audit Corporation]

Activities

- **Proposals on national policies regarding higher education and the independent drafting of such policies**
  - Conducting investigative research and making policy proposals on issues relating to higher education and academic research
  - Submitting requests for consultation, reform, and revisions with regard to the administration of national university corporations and financial support
  - Conducting seminars on issues relating to higher education, academic research, and national universities
- **Improving the study environment for students to promote quality education, academic research, and social contribution in national universities**
  - Conducting investigative research and formulating guidelines on the current state of admissions to national universities
  - Gathering information and materials, conducting investigative research, and examining issues pertaining to high-quality education and research
  - Conducting investigative research, follow-up studies, verification and holding symposia relating to the evaluation of results and certification of national universities
  - Conducting and examining investigative research on policies for the promotion of government exchange programs and international student exchange programs of individual universities
- **Providing management support for national university corporations**
  - Examining, assisting, collecting, and providing information on improvement of the university management environment, including personnel, labor, finance, facilities and hospital management
  - Providing management support for national universities by providing information and materials
  - Organizing, implementing, and supporting training programs to improve the performance of executive officers and staff of national universities
  - Providing assistance and consulting services in risk management, administration, and improvement of comprehensive insurance for national university corporations
- **Promoting exchange projects based on international partnerships**
  - Promoting exchange projects with the various overseas presidents' associations through the participation of members
  - Pursuing international exchange with various overseas universities through partnerships and cooperation with public and private Japanese universities
  - Supporting other activities of international institutions in Japan related to international student exchange
- **Study and research activities**
  - Analyzing the current status and issues of national universities, conducting investigative research concerning their future, and gathering basic information and materials
- **Other activities geared to achieving JANU's goals**
  - Carrying out PR activities related to national universities and JANU
  - Conducting investigative research in specific fields requiring an immediate response
  - Providing support for the activities of each JANU branch in Japan