

Session D - Establishment of suitable funding programs that flexibly react to the needs of the various academic disciplines
Prof. Dr.-Ing. Gerhard Sagerer, Rector Bielefeld University



Excellence Strategy – Frame details for cluster applications

- **195 cluster project sketches** from 63 universities submitted in fall 2017
- **88 projects** have been asked to submit a **full proposal**
 - 26 from more than one university together (30 %)
 - 35 as continuation of existing clusters (40 %)
- **Feedback** and **selection** in fall 2018, **funding** will begin on January 1st 2019

Clusters and disciplines in both Excellence-Programs

Discipline	Excellence Strategy (proposals)		Excellence Initiative * (2006 – 2017)	
Humanities und Social Sciences	17	19 %	7	15 %
Life Sciences	21	24 %	17	35 %
Engineering Sciences	23	26 %	12	25 %
Natural Sciences	27	31 %	13	26 %
Total	88		49	

* See DFG/WR-Report 2015

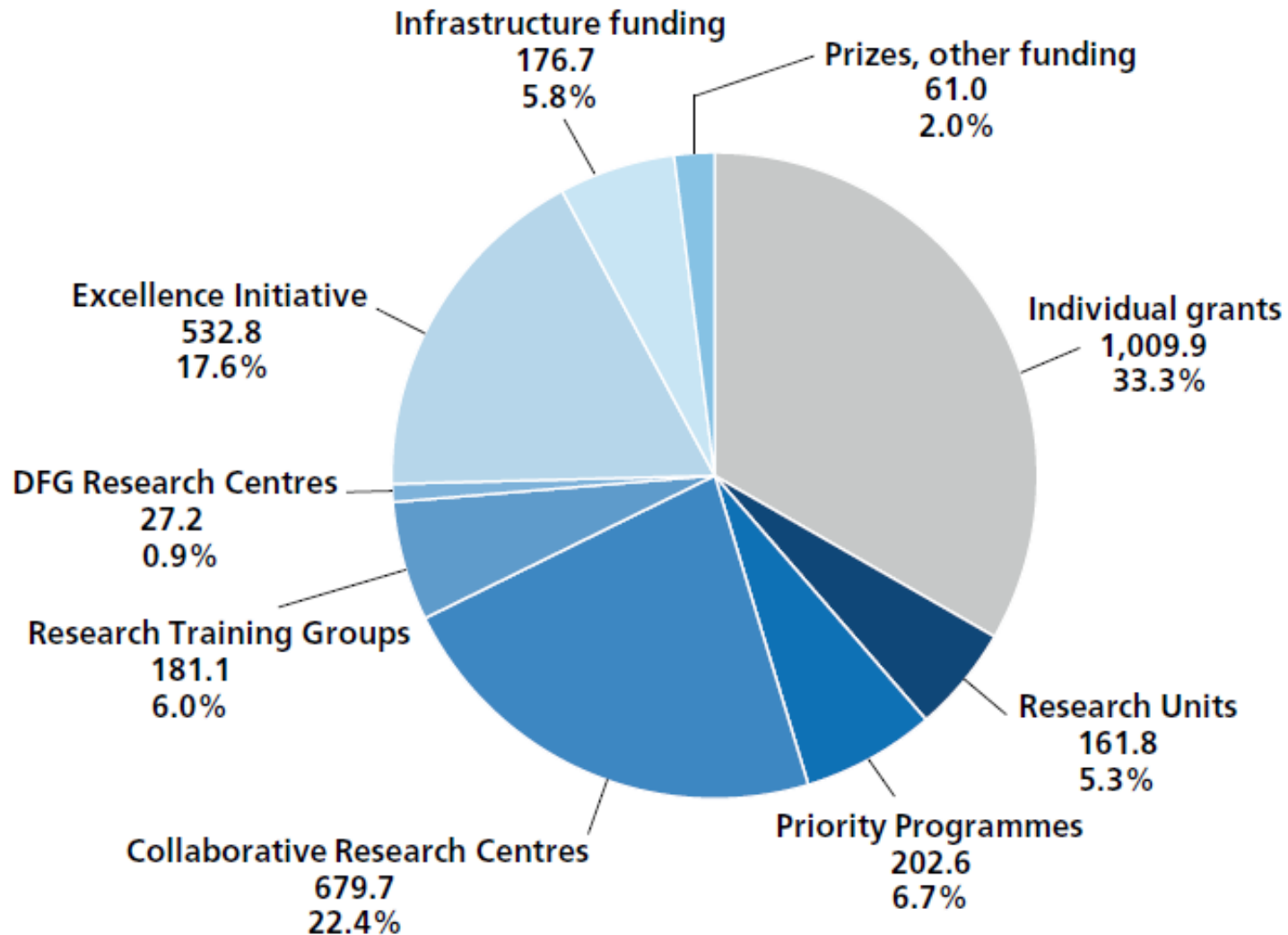
Disciplines in the Excellence Strategy

- Only a **light bias** in the subject distribution, depending on the **German research landscape**
- Humanities and Social Sciences are well positioned
 - 17 projects (19 %) are invited to submit full proposals
- Important role of the associated program “**Tenure-Track-Professorships**” 2017-2032
 - First phase: 468 TT-Professorships in 34 universities

Project funding by German Research Foundation (DFG)

- DFG programs fund basic research:
 - open for **bottom-up** research ideas, with an elaborate quality management for every discipline (peer review)
 - **support** by program officers for scientists as for administrative personnel
- Funding programs are **open** to every discipline, the **distribution** is according to their **profile**:
 - **Individual** Grants Programs: Research Grants, Scientific Networks, Research Fellowships...
 - **Coordinated** Programs: Priority Programs, Research Training Groups, Collaborative Research Centers...

DFG research funding by program



Source: DFG Annual Report 2016

DFG project funding by discipline

Discipline	Funding (Mill. €)	
Humanities und Social Sciences	468.8	15 %
Life Sciences	1 052.5	35 %
Engineering Sciences	584.5	19 %
Natural Sciences	664.8	22 %
Interdisciplinary	263.1	9 %
Total	3 033.7	

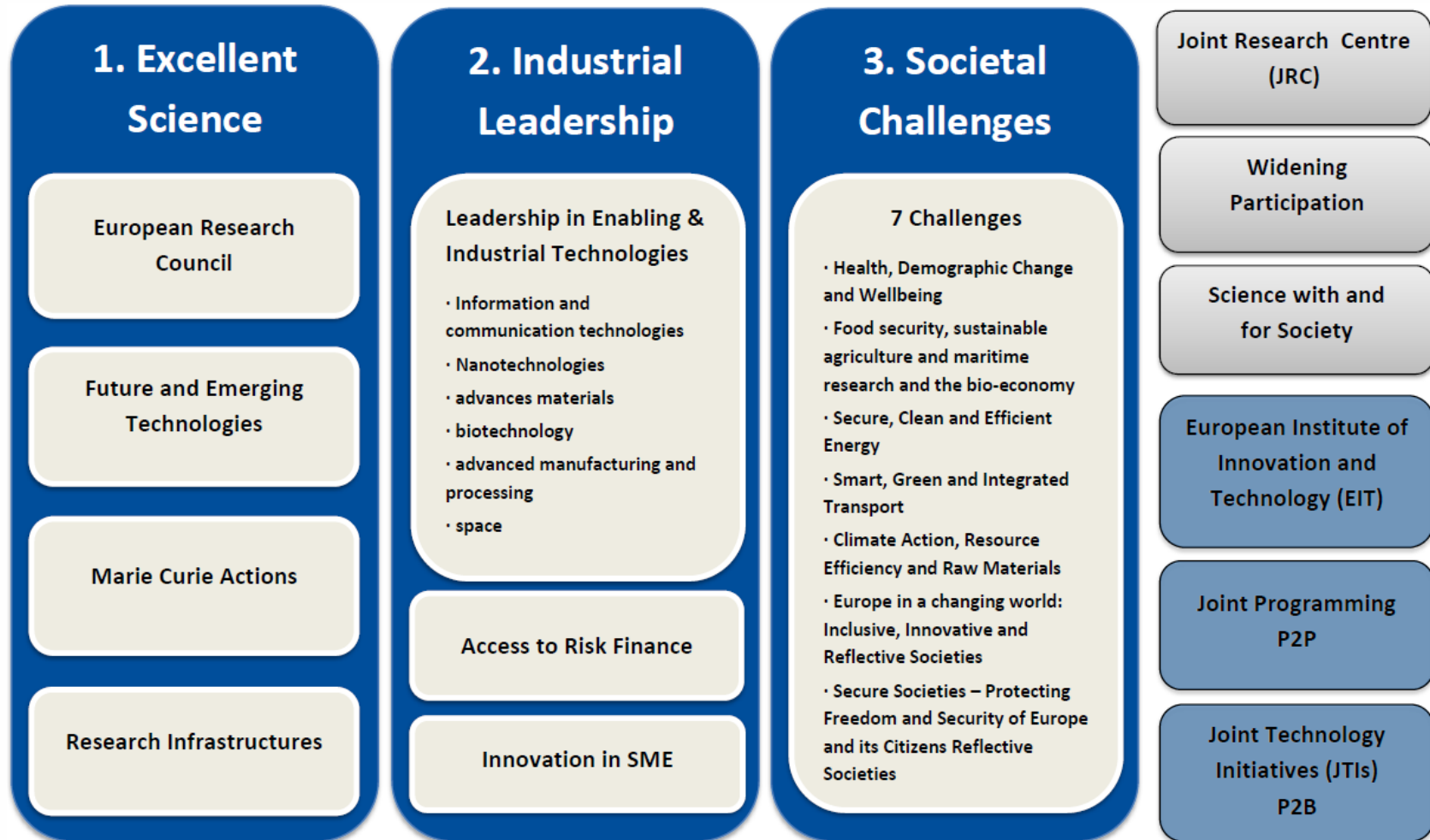
Project funding by the Federal Ministry of Education and Research (BMBF)

- BMBF **priority programs** are focused on **applied research**
- Current **research policies**: High-tech and Innovation, Environment and Climate, Health Research, Digital World, Energy and Economy
- Rather **top-down** calls for proposals, BMBF has both administrative and topic-specific contact persons
- Side effect: CfP in Humanities and Social Sciences field are **seldom**, normally only integrated in broader programs
 - Framework Program “Humanities and Social Sciences” from 2012 to 2017, currently no continuation *

EU-program Horizon 2020

- 8th **Framework Program** for Research and Innovation (2014 to 2020)
 - Both basic research and disruptive innovation, with a focus on impact
 - Funding for the entire value chain: “from research to market”
- Three **‘pillars’**: Excellent Science, Industrial Leadership, Societal Challenges
 - First ‘pillar’ is **bottom-up**, open to all disciplines, **research-driven**
 - Other ‘pillars’ top-down, one **technology-driven**, the other **politics-driven**

Horizon 2020 – Program Structure



Funding by foundations – Bound to discipline

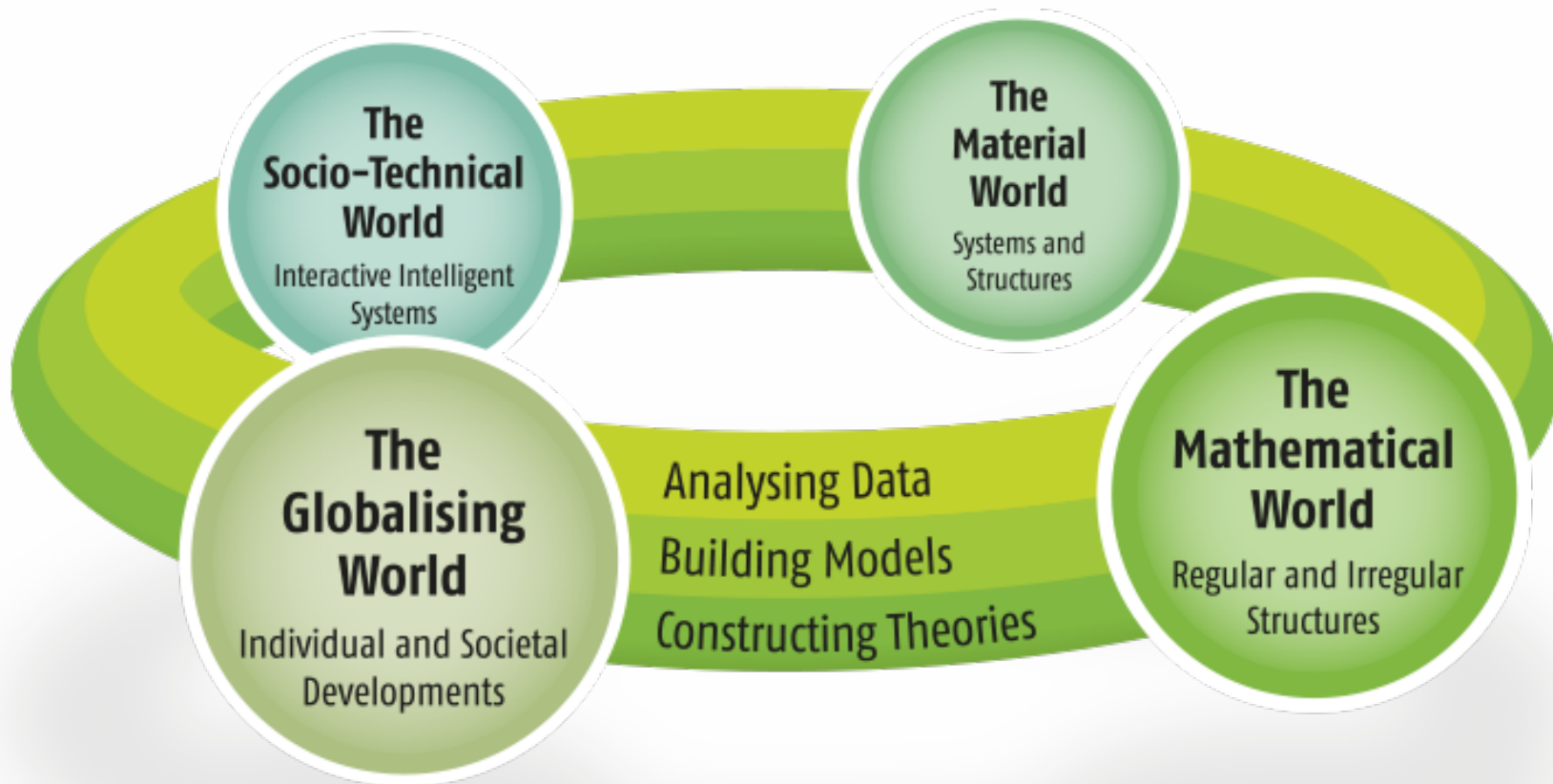
- Funding in Germany also by **non-profit foundation** – especially important for individual research during and after the PhD-period
 - As examples: big foundations with Humanities and Social Sciences as a main focus like Volkswagen-Foundation, Gerda-Henkel-Foundation, Fritz-Thyssen-Foundation...
- But: this means, these funding possibilities are often **discipline-bound**, thus **not flexible**

Bielefeld University – Interdisciplinarity as feature

Bielefeld University – History in a glance

- Foundation 1969
 - **3** Faculties: Mathematics, Law, Sociology
 - **23** Professors
 - **270** Students
- Today
 - **13** Faculties: Arts & Humanities, Natural, Social, Technical Sciences
 - Planning a **new faculty** for medicine!
 - **260** Professors
 - More than **24K** Students

Bielefeld University – a vision



Disciplines in the DFG Top Ten

- Informatics
- Literary Studies
- Mathematics
- Psychology
- Sociology
- Linguistics
- Economics
- Zoology

Some Projects of Bielefeld University

- Excellence Cluster Cognitive Interaction Technology (CITEC)
- **14** Tenure-Track-Professorships
- **4** DFG Collaborative Research Centers
- **5** Graduate Schools
- International Center for Advanced American Studies (CALAS)
- ...

Horizon 2020-Projekts of Bielefeld University

- **27** projects, 5 as coordinator
 - Excellent Science: 1 ERC, 6 MSCA, 2 FET-Flagships, 1 FET-Open, 3 Research Infrastructures
 - Industrial Leadership: 7 LEIT-ICT, 1 LEIT-Bio
 - Societal Challenges: 1 SC1 (Health), 1 SC3 (Energy), 2 SC6 (Societies)
 - Science with and for Society: 2

Thank you !

