

Academic mobility and exchange

Challenges and opportunities

Dr Erik Lithander

Pro Vice-Chancellor and Vice-President

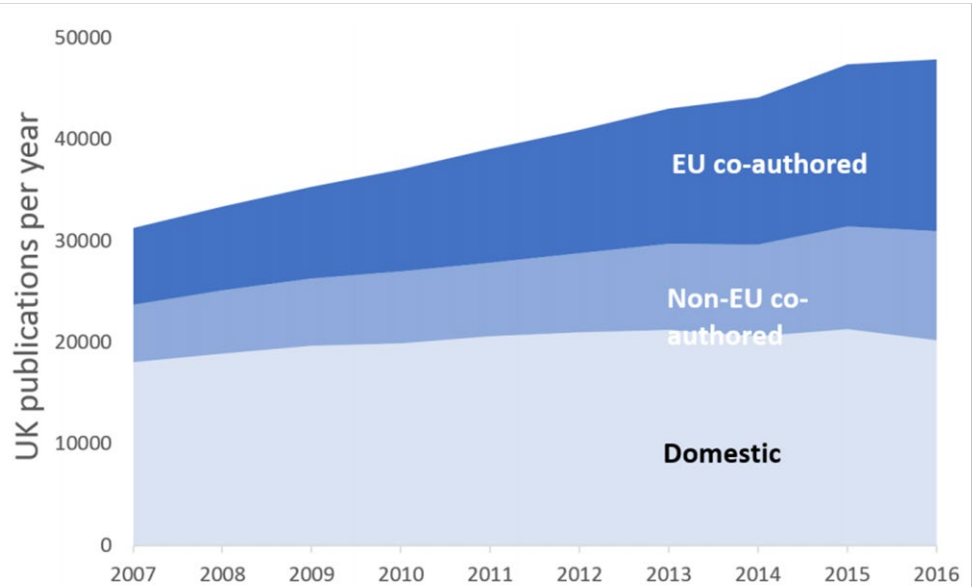
The University of Bristol

bristol.ac.uk

Why does international collaboration matter?



The trajectory of international co-authorship on research publications at four research-intensive universities



International dimensions of UK research

Figure 20: Academic staff by nationality and employment function, 2016–17

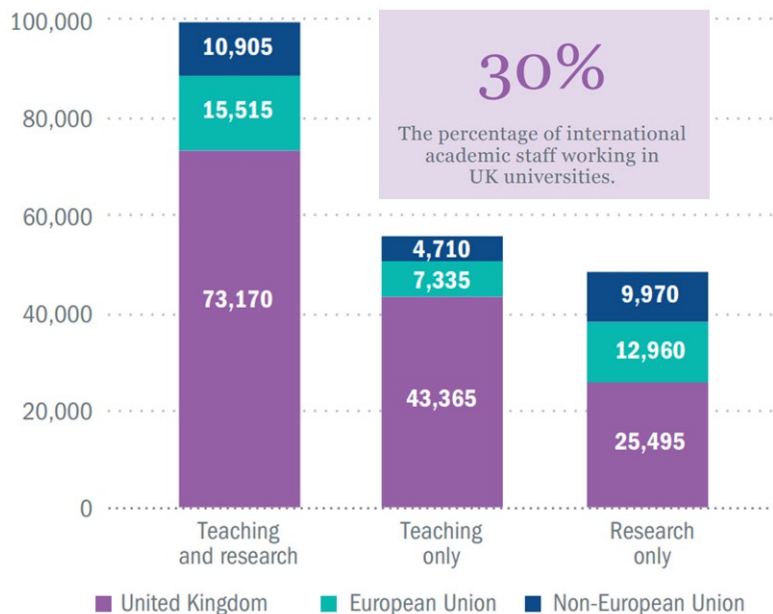
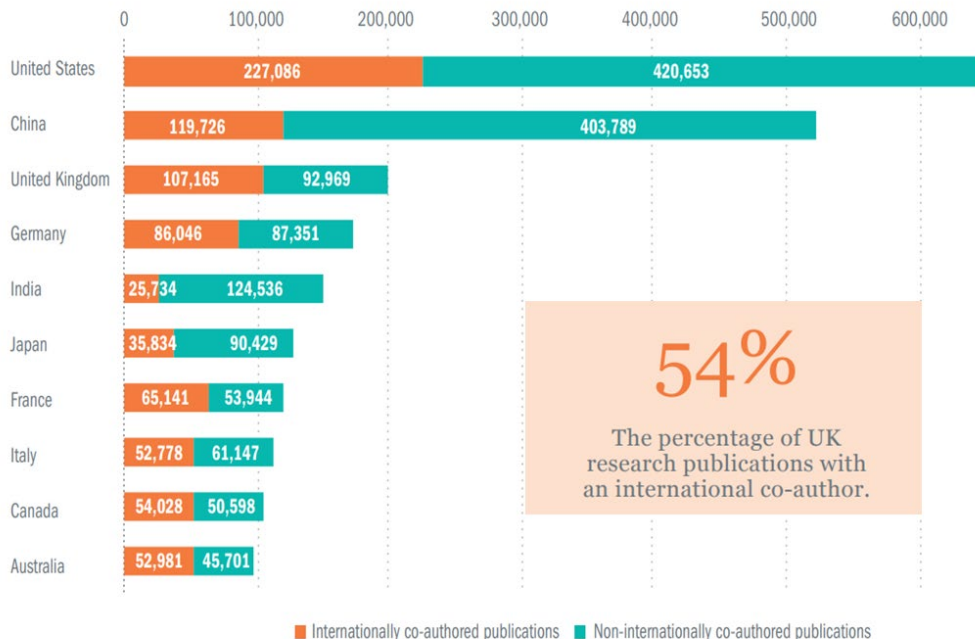
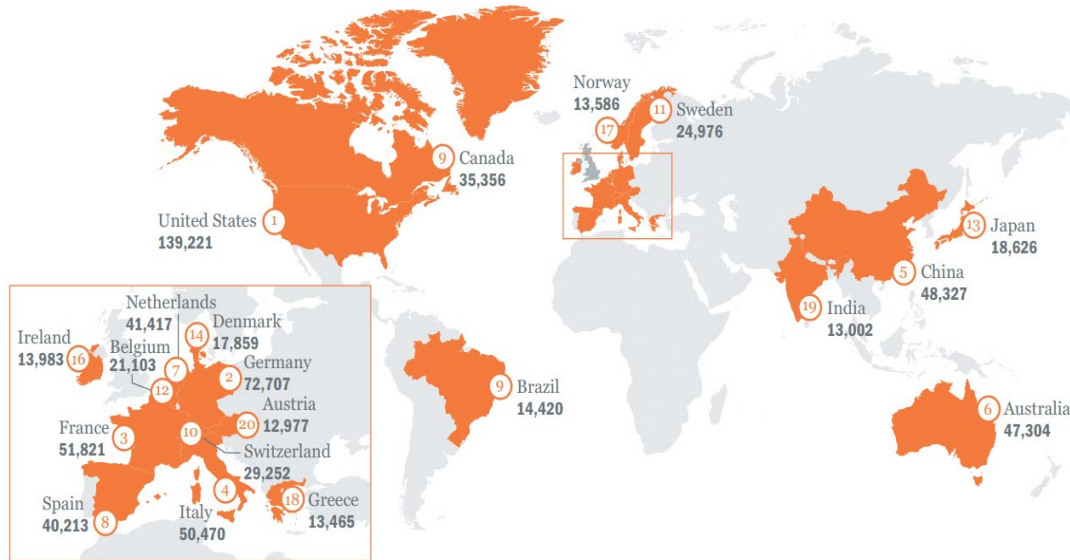


Figure 23: Top ten countries by number of research publications, broken down by international and domestic co-authorship, 2017



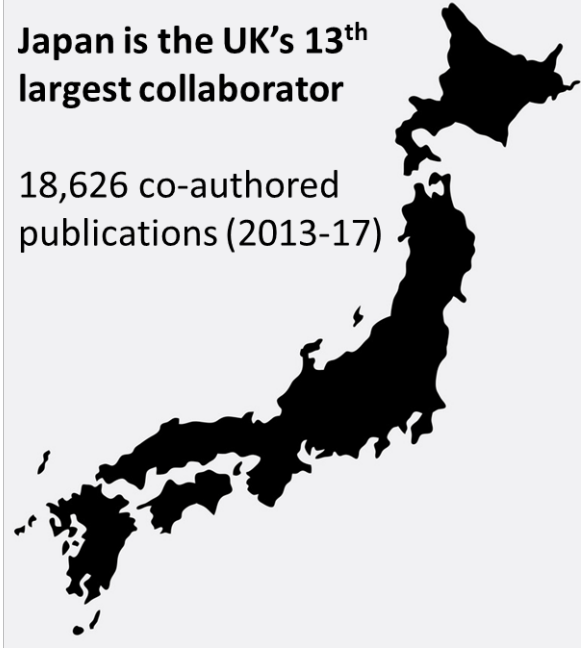
Who do UK researchers collaborate with?

Figure 24: Countries with highest numbers of co-authored publications with the UK between 2013 and 2017, top 20



Japan is the UK's 13th largest collaborator

18,626 co-authored publications (2013-17)



How is academic mobility supported?

Dual-support system – institutional block grant & project-based funding



UK Research and Innovation

Flexible grants available to researchers – from academies and other sources



European Framework programmes – Horizon 2020 and Erasmus+



Strategic funding – available from government for specific countries, programmes etc.

bristol.ac.uk



Barriers to increased academic mobility



Funding & resource for
international exchange

bristol.ac.uk



Personal & cultural
barriers



Institutional &
structural barriers

Seven ways to enhance UK-Japan academic mobility

- Enhance mutual understanding of our two systems
- Reciprocal language training
- Making the most of our existing faculty and alumni
- Increase strategic, institution-level engagements – individual or consortia
- Agency/agency and Govt/Govt agreements to fund ECR mobility
- Small-scale, flexible funding for researchers and institutions
- Better post-study work and post-doctoral opportunities



Kenya Veterinary and Animal Sciences University



UNIVERSITY OF ALBERTA



Send a Cow



PENNSTATE



NORTH WYKE



ROTHAMSTED RESEARCH



THE UNIVERSITY OF WESTERN AUSTRALIA
Advancing International Excellence



INIA
Instituto Nacional de Investigación Agropecuaria
URUGUAY



MASSEY UNIVERSITY



INSTITUTE OF INTERNATIONAL EDUCATION



Centro Internacional de Agricultura Tropical
International Center for Tropical Agriculture
Consultative Group on International Agricultural Research

Started with an internal grant of £10,000 to facilitate mobility, the Global Farm Platform is a global network of 15 farm platforms and 24 institutions across 14 countries and 6 continents which has attracted £4.5M of external funding and produced numerous publications including 2 in *Nature* (2014).

Thank you