



The Role of the University in the Provision of Education in the Changing Society

Yamaguchi University

President: Masaaki Oka, MD, PhD

◇Concept Of YU

A Place of Wisdom: Discover It, Nourish It, and Realize It.

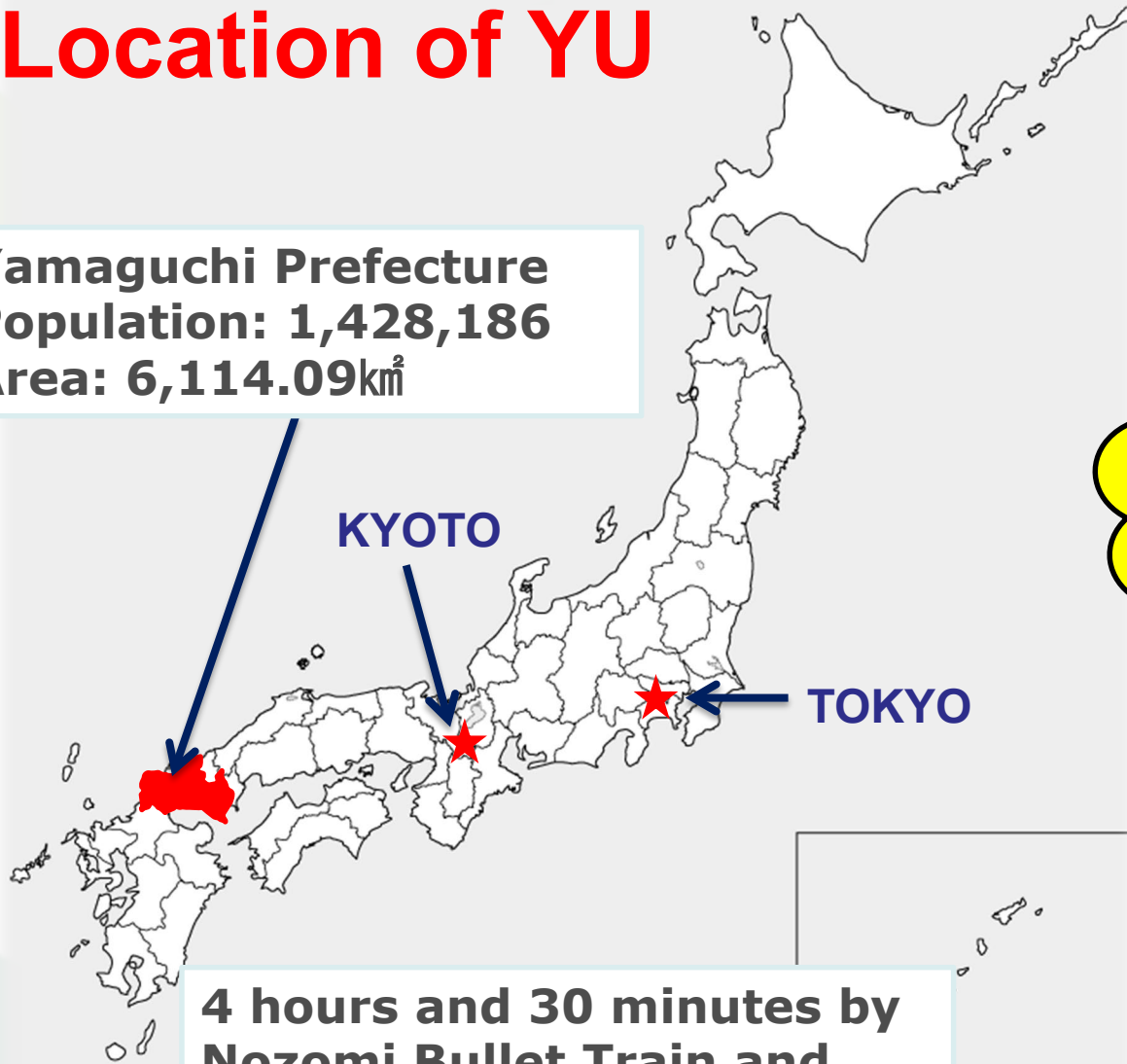
Mission: Education • Research • Contribution to Y Prefecture



GDP: ranking 8th in 47 Japan districts

Location of YU

Yamaguchi Prefecture
Population: 1,428,186
Area: 6,114.09km²



4 hours and 30 minutes by
Nozomi Bullet Train and
1 hour and 30 minutes by
an airplane from Tokyo

Birthplace of
the Meiji Restoration



Yama-me

Historical Background of Yamaguchi University



**Yamaguchi Kodo,
founded in 1815**



**Yamaguchi higher
middle school,
founded in 1886**

**Yamaguchi high school,
founded in 1894**

**Yamaguchi University,
founded on May 31 in 1949**

1 Tokyo University, founded in 1684

2 Tohoku University, founded in 1736

UCL celebrates 150th anniversary of Japan's Choshu Five **(Study abroad in UCL in 1863)**

Masaru Inoue (Yakichi Nomura)

Kinsuke Endo

Kaoru Inoue
(Tamon Inoue)



Hirobumi Ito
(Syunsuke Ito)

Yozo Yamao

Hirobumi Ito: First Prime Minister

Kaoru Inoue: First Minister of Foreign Affairs

Masaru Inoue: Father of Rail Way

Kinsuke Endo: Father of Mint

Yozo Yamao: Father of Engineering, Sign Language

Japan-UK 150th Meiji Restoration Anniversary Memorial Symposium

DATE/TIME: FRIDAY, 22 JUNE, 2018 2:00-7:00 P.M.

LOCATION: EMBASSY OF JAPAN IN THE UK, LONDON

“Cutting-edge Technologies for a Safe, Secure and Sustainable Future”

Opening Addresses

- Mr. Takahashi Okada,
Minister Plenipotentiary, Embassy of
Japan in the UK
- Message from Mr. Shinzo Abe,
Prime Minister of Japan
- Message from Mr. Yoshimasa Hayashi,
Minister of MEXT
- Vice-Provost Lori Houlihan, UCL
- President Masaaki Oka, YU
- President Yoshizane Maeda, KU

Keynote Speeches

- Prof. David Alexander, UCL
- Prof. Yuko Hayashi, YU

Academic Lectures

- Prof. Fusanori Miura, YU
- Prof. Shigeru Nakao, KU
- Mr. Kazuo Tachi, JAXA
- Dr. Ilan Kelman, UCL

CO-HOSTED BY: University College London (UCL) / Yamaguchi University (YU) / Kagoshima University (KU) / Embassy of Japan in UK

UNDER THE AUSPICES OF: Yamaguchi Prefecture / Kagoshima Prefecture / JSPS London / Yamaguchi Japan British Society / Non-Profit Organization the Anglo-Japanese Friendship Society / Japan Aerospace Exploration Agency (JAXA) / JETRO London / Japan Local Government Centre / The Japan Foundation, London / YAMAGUCHI PREFECTURAL TOURISM FEDERATION

About Yamaguchi University as It Stands Today

■Size: More than twice of Tokyo Disney Land

■Number of Students: 10,269

■Undergraduate Students : 8,744

(9 **Faculties**; Faculty of Humanities, Education, Economics, Science, Veterinary Medicine, Global & Science Studies, Medicine & Health Sciences, Engineering)

■Graduate Students : 1,525

(8 **Graduate schools**)

■International Students: 430(710/year)

■Number of Research Staff: 1,087

Budget : 46 billion yen (ca \$480 million)

(May 1, 2016)



YU Mission

Regional revitalization and priority support in specific fields
(YU aims at education and research worldwide or nationwide
in specific fields while becoming the core of regional revitalization.)

Future Vision of YU 2015 (Future Vision after 10 years)

In consideration of the wave of large globalization and diversity, YU will create “a diverse campus” that feels the Asian wind in 2025 after 10 years, all university people including the international students and the people of the area by permitting the **diversity** such as mutual history, culture, gender, race, ethnicity, religion, disability, sexual orientation, and language, etc.

Education of Intellectual Property in YU

Background

- ◆ Increase of Global Competition
- ◆ Lack of Supporting Human Resources
- ◆ Indifference to Intellectual Property



It is necessary to cultivate human resources capable of making use of knowledge on intellectual property.

Objects

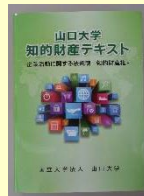
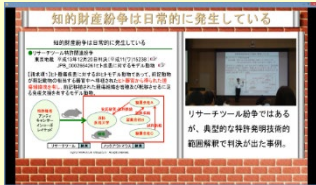
① Make students interested in intellectual property

② Promote active learning by realizing the connection between self and real world

③ Utilize practical IP knowledge and skills necessary for research

Characteristics of IP ed. in YU

1. All 2,000 freshman YU students must take IP subjects.
2. Teaching material (e-learning, YUPASS, Text books)

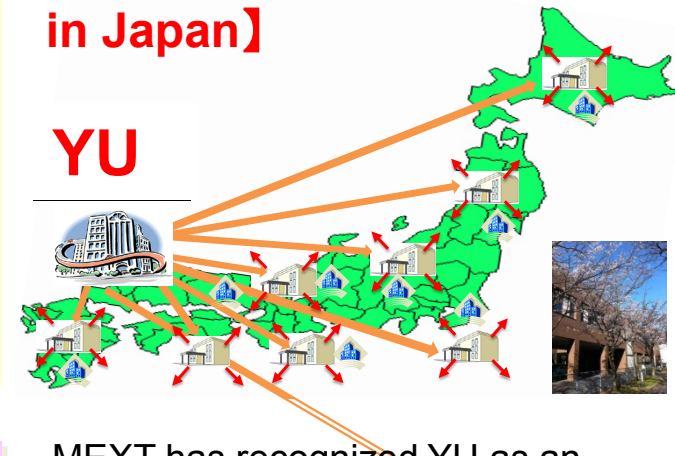


3. Active learning
4. High level of IP education for advanced students

Outcome

- (1) Strengthening Japanese IP
- (2) Increase student employment (employment rate) by implementing education

【The Base for IP Education in Japan】



MEXT has recognized YU as an intellectual property education base. We are developing Yamaguchi University's advanced IP education efforts nationwide.

Advanced Science & Innovation Research Center

(1) Formation of Research base

☆Employment of young researchers at Asian partner universities in order to promote international collaboration

(2) Industry–university cooperation base

☆Invitation to researchers to participate in a combined wages scheme with companies

(3) Overseas cooperation base

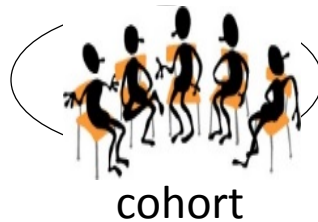
☆Invitation for young researchers who can conduct collaborative research with internal

☆Employment of post-doctoral researchers through university budget and support for their research

CPOT Education System (Center for Post Graduate Training)



Project research



cohort

OPostgraduate Advanced Training

- Knowledge about management of technology
- Creation of intellectual property
- Practice of open innovation

OImplementation of practical education

in which autonomous problem solving is required amongst small interdisciplinary student groups

Entrepreneur Studio (Digital Manufacturing Kobo)

OBasic subjects

- Innovation and entrepreneurship
- Business planning

OAdvanced subjects

- Theory of commercialization system of products
- Intellectual property strategy

OPractical subjects

- Business ideas
- Internship at venture companies

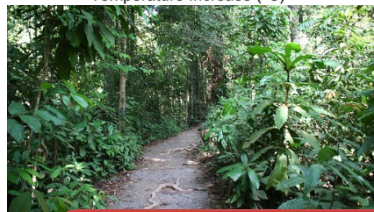
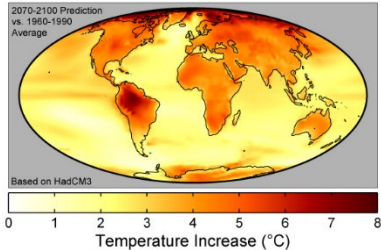


➤ **Providing student groups with a base for their activities**, in which they can attempt to realize their original business plans.

Yamaguchi University Designates 12 Priority Universities for Cooperation in 2017

Universities/Institutes	Project Team Leader		Period
Southern California Institutes (SCIs) (USA)	Graduate School of Medicine	Professor Michihiro Nakamura	2017～2021
University of Michigan (USA)	Graduate School of Medicine	Professor Koh Shinoda	2017～2021
Udayana University (Indonesia)	Graduate School of Sciences and Technology for Innovation	Professor Norikazu Shimizu	2017～2021
University College London (UK)	Graduate School of Sciences and Technology for Innovation	Professor Akio Kamimura	2017～2021
University of Zaragoza (Spain)	Graduate School of Sciences and Technology for Innovation	Associate Professor Izumi Kumakiri	2017～2021
Ewha Womans University (Korea)	Graduate School of Sciences and Technology for Innovation	Professor Masato Shinji	2017～2021
Kasetsart University (Thailand)	Graduate School of Sciences and Technology for Innovation	Professor Mamoru Yamada	2017～2021
Chulalongkorn University (Thailand)			2017～2021
Wageningen University (Netherlands)	Graduate School of Sciences and Technology for Innovation	Professor Masayoshi Shigyo	2017～2021
Shandong University (China)	Graduate School of East Asian Studies	Professor Takahisa Uemura	2017～2021
		Professor Ge Qi-Wei	
University of Technology, Malaysia (Malaysia)	Graduate School of Innovation and Technology Management	Professor Ken Kaminishi	2017～2021
M.V. Lomonosov Moscow State Univ. (Russia)	Research Institute for Time Studies	Professor Kenta Fujisawa	2017～2021

Global Climate Change



Tropical area

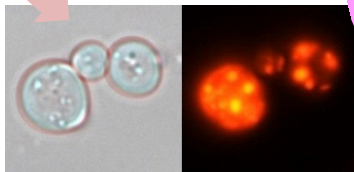
High-temperature Fermentation & Bio-energy Production with Thermotolerant microbes



Chemicals, Medicines

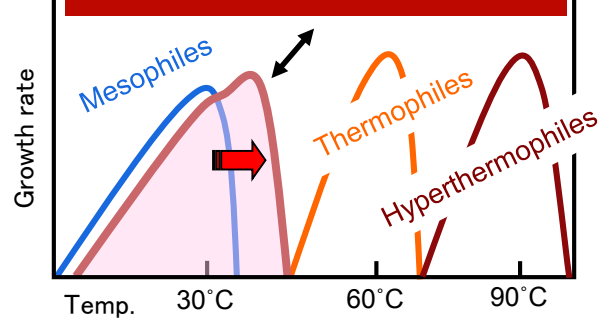


Biofuel



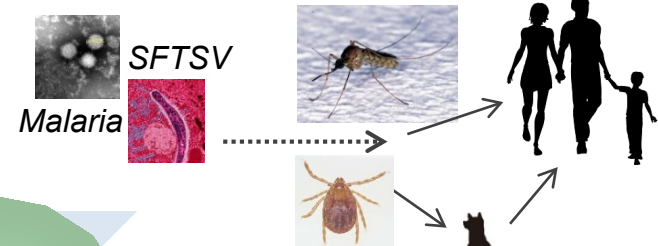
HBsL Vaccine production by Yeast

Thermotolerant microbes



Prevention of Infectious disease in Tropical area and of its transmission

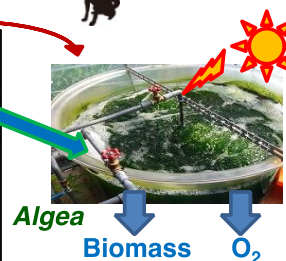
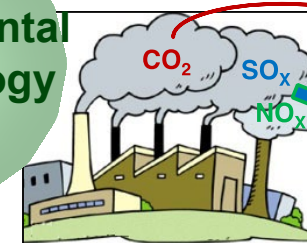
Transmission



Microbial Fermentation Group

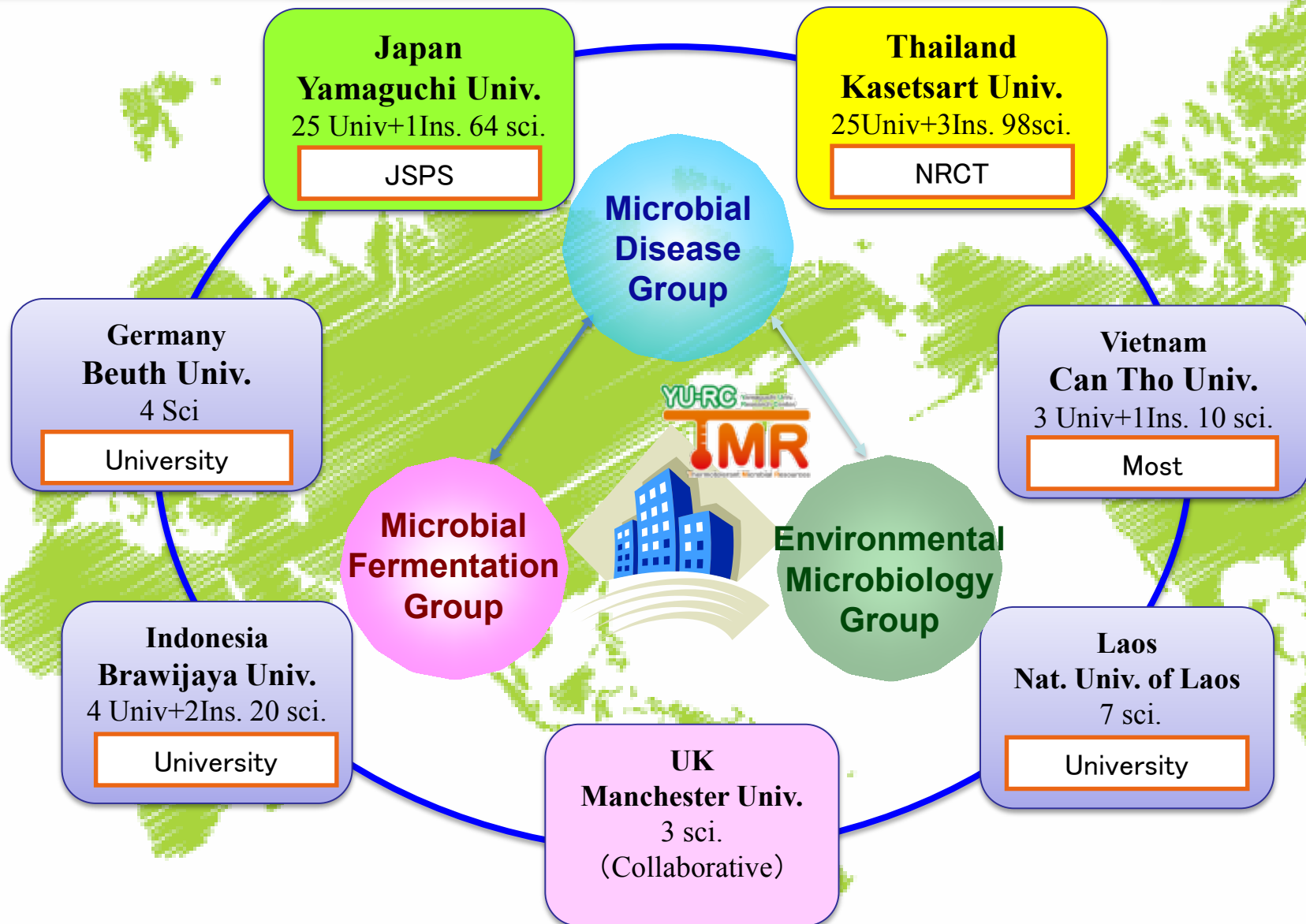
Microbial Disease Group

Environmental Microbiology Group



Bioremediation & Biomass utilization

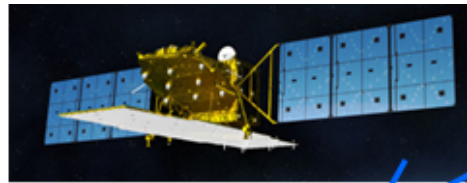
Research Center for Thermotolerant Microbial Resources



International Research Network

Research and Human Development Network of Yamaguchi University

When ground network is broken
Satellite "Kizuna"
line is used.

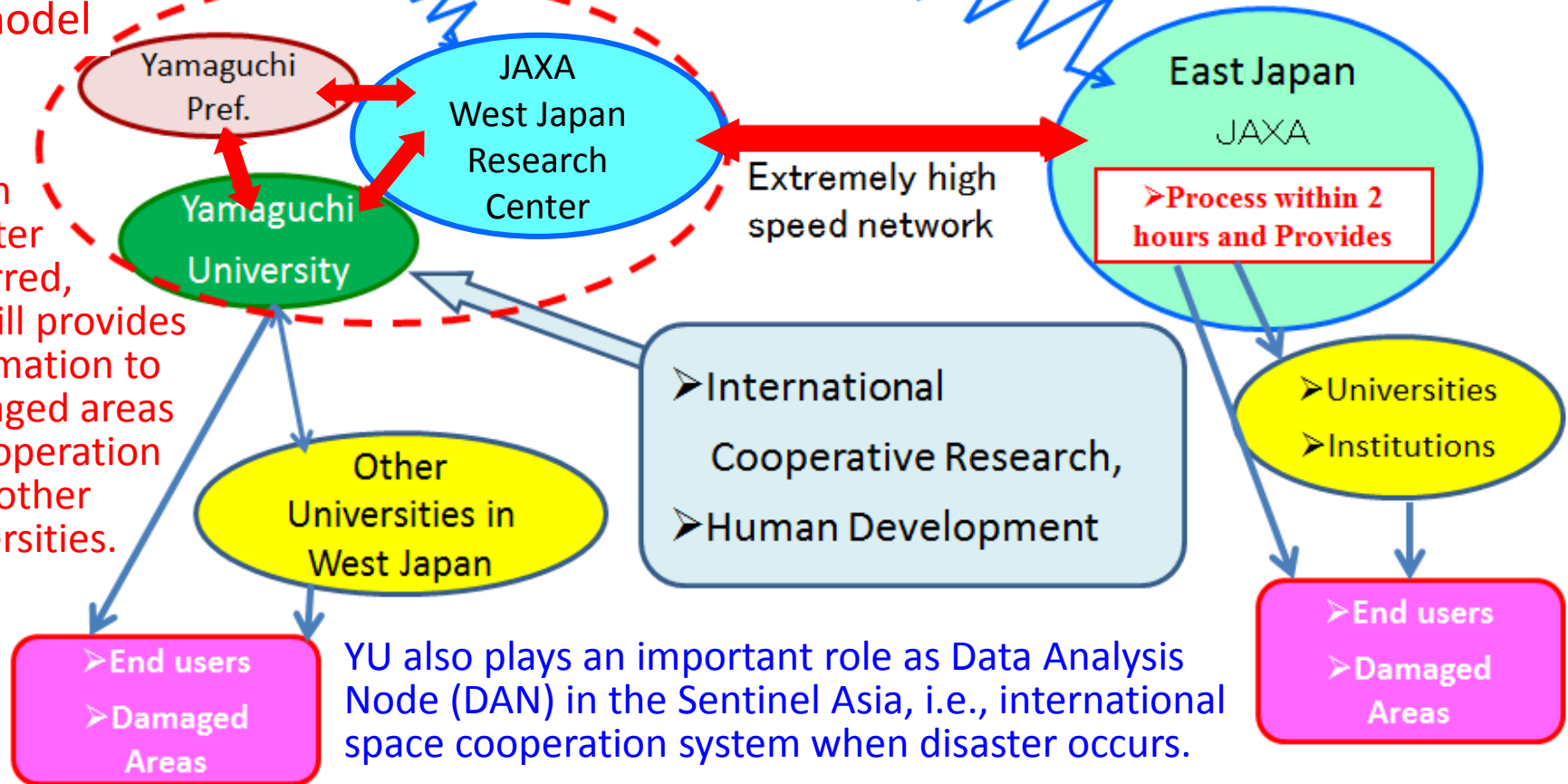


ALOS-2

JAXA automatically
analyses data from
ALOS-2 and send
them to JAXA West
center and YU

Yamaguchi
model

When
disaster
occurred,
YU will provides
information to
damaged areas
in cooperation
with other
universities.

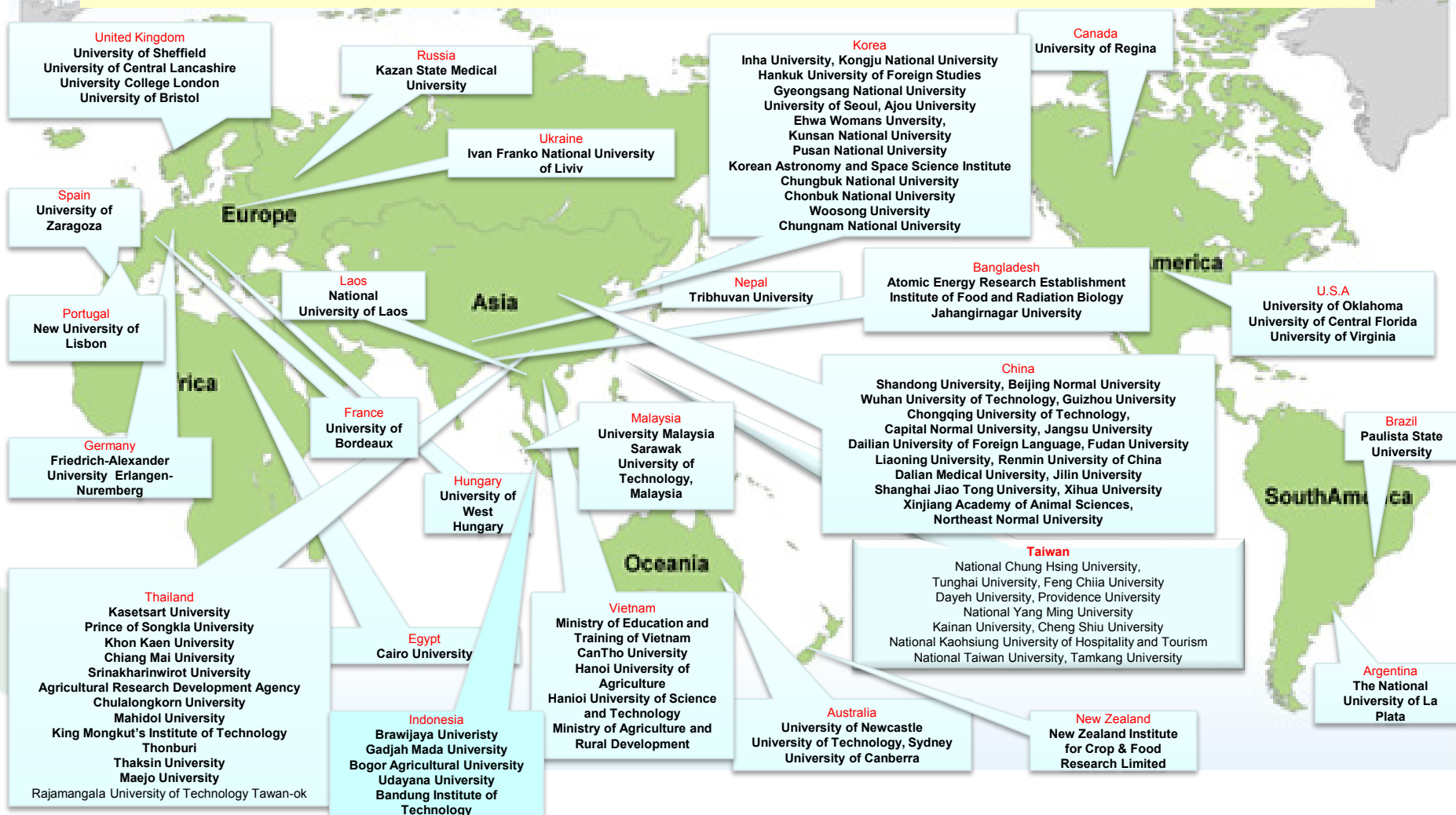


YU also plays an important role as Data Analysis
Node (DAN) in the Sentinel Asia, i.e., international
space cooperation system when disaster occurs.

YU will cooperate with other universities and research institutions not only in Japan but also in
foreign countries. JAXA; Japan Aerospace Exploration Agency

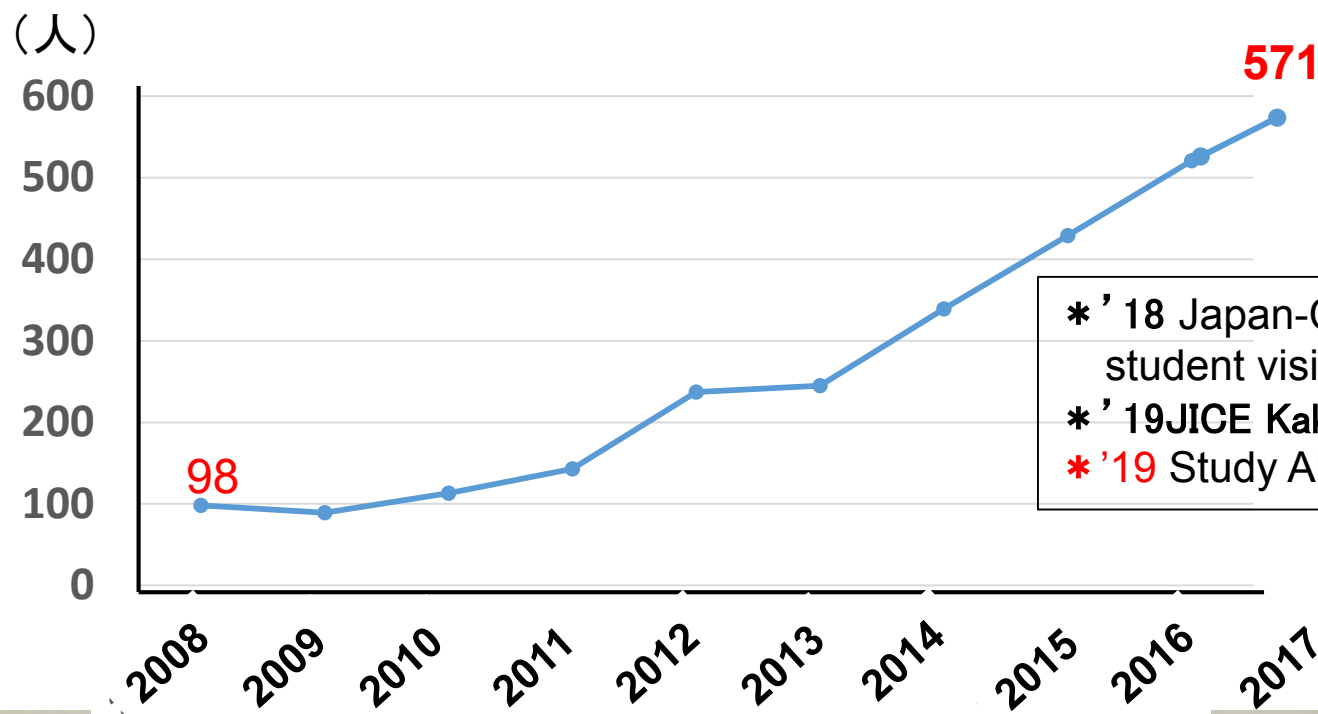
About Yamaguchi University as It Stands Today

Yamaguchi University has formed academic exchange agreements with 142 universities and institutions in 35 countries.





YU Oversea Study Abroad Support System



* '18 Japan-China friendship college student visiting team : 26 to Beijing
* '19 JICE Kakehashi Project: 11 to USA
* '19 Study Abroad Initiative : 5

'16 International St. in YU: **516**, Short Stay Int. St.: **194**
Total 710 sts. in 2016



Sample of Schedule for Overseas Students

All exchange students are required to take a minimum of 7 courses (28 YU credits) in an academic year.

Placement Test (J-CAT®)

Below a score of 200

Above a score of 250

Basic Package

- ◆ Japanese: 18 credits
- ◇ Specialty Course Conducted in English: 10 credits

Language courses
in Japanese

Specialty
Courses
in English

- ◆ Japanese II (Comprehensive)
- ◆ Japanese II (Vocabulary)
- ◆ Japanese III (Comprehensive)
etc.

- ◇ Studies in Current International Society
- ◇ Current International Economics
- ◇ Studies in Current Science and Technology
etc.

Intermediate Package

- ◆ Japanese: 14 credits
- ◇ Specialty Courses: 14 credits
(Choice of courses conducted in either Japanese or English is up to the student.)

Language courses
in Japanese

Specialty
Courses in
either English or
Japanese

- ◆ Japanese III (Comprehensive)
- ◆ Japanese IV (Vocabulary)
- ◆ Japanese IV (Comprehensive)
etc.

- ◇ Studies in Current International Society
- ◇ Current International Economics
- ◇ Studies in Current Science and Technology
etc.

Advanced Package

- ◆ Japanese: 10 credits
- ◇ Specialty Courses: 18 credits
(Choice of courses conducted in either Japanese or English is up to the student.)

Language
courses
in Japanese

Specialty Courses in
either English or
Japanese

- ◆ Japanese V (Comprehensive)
- ◆ Japanese V (Vocabulary)
- ◆ Japanese V (Business Japanese)
etc.

- ◇ Studies in Current International Society
- ◇ Current International Economics
- ◇ Studies in Current Science and Technology
etc.

Communication Seminar (required)

※Students are permitted to participate in the courses above their proficiency (for example: an intermediate student participating in an advanced course).

Assistance for Overseas Students



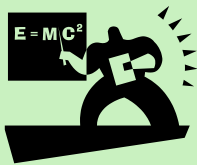
Accommodations (Dormitory)

- A new dormitory is to be built so Japanese and overseas students can live together.
- The faculty will assist students in finding private accommodation where rent will range from ¥25,000 to ¥40,000.



Buddy System

- Each overseas student will be assigned a Japanese student “Buddy” so they can have a cooperative experience.
- “Buddies” will support each other at school and also outside school.



Advisor for Overseas Students

- On weekdays, an advisor and an assistant are available, who will help with your everyday questions and concerns.



Getting a Job

- Assistance will be made available concerning finding a job at a Japanese company.
- Service includes “Exchanges with Overseas Students and Entrepreneurs” and so forth.



Health Administration Center

- Free health counseling with doctors, health nurses, and psychologists; and free treatment and medication are available weekdays during working hours. The doctors speak English.

YU Int. Share House (3/Room, 31 rooms, 200 GBP/mo.)





**Thank You
for Your
Attention!**