



Japan-France Symposium in Higher Education

Session 1

The universities' roles in the revitalization of local regions



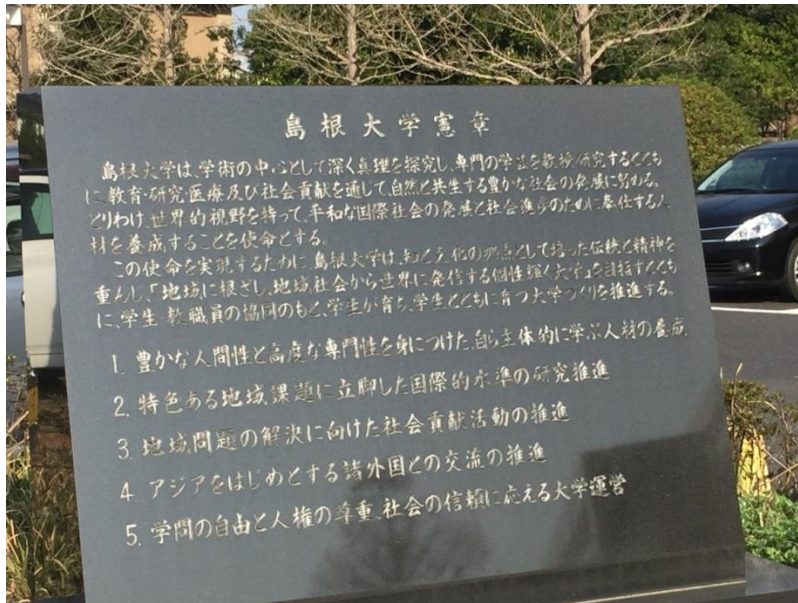
By

Yasunao Hattori

President of Shimane University

Shimane University's Charter

Shimane University aims to develop itself with its people and the community



Shimane University cultivates individuals, with a high degree of expertise as well as public-mindedness and ethics, who can take on important roles in modern society.

Shimane University has a splendid educational environment in the San-in region rich with nature, history, and culture, where students can devote themselves to learning while being actively involved in society through academic and other extra-curricular activities.

Organization of Shimane University



Matsue Campus

New!

Faculty of

- Law and Literature
- Education
- Human Sciences
- Science and Engineering
- Life and Environmental Science

Graduate School of

- Humanities and Social Sciences
- Education
- Science and Engineering
- Life and Environmental Science
- Natural Science and Technology

New!

Faculty of Medicine

Graduate School of Medical Research



Izumo Campus

Numbers of Students: 5316, Teaching staff:789

Location of Shimane University

Location of Shimane University

Campus Transportation

From Tokyo

By Air:

Tokyo (Haneda)–Izumo
5 flights/day (1 hour 35min.)
Tokyo (Haneda)–Yonago
5 flights/day (1 hour 25min.)

JR (Japan Railway):

[Shinkansen] 3 hours 20min.)
[Shinkansen] 3 hours 20min.)
[Shinkansen] 3 hours 20min.)

Shuttle bus

Izumo Airport to
Matsue Railway Station (30min.)
Izumo Railway Station (25min.)
Yonago Airport to
Matsue Railway Station (45min.)

From Osaka

By Air:

Osaka (Itami)–Izumo
6 flights/day (60min.)

JR (Japan Railway):

Shin Osaka–Okayama
(Shinkansen [Bullet train] 50min.)
Okayama–Matsue (2 hours 20min.)
Okayama–Izumo (3 hours)

Tokyo

Shimane
Prefecture

Matsue City
(Matsue Campus)

Izumo City
(Izumo Campus)



Access from the nearest station



Population Changes and Related Regional Issues in Shimane Prefecture

1. Population changes in Shimane Prefecture (excerpt.)

(1) Peaked at 929 thousand in 1955, but decreased during a period of the high economic growth due to the outflow to larger cities

(2) Regional difference for the decrease :

This decrease was relatively small in larger cities such as Matsue City or Izumo City

Year	1947	1955	1975	1985	2014
Pop. within prefecture	890,000	929,000	769,000	795,000	697,000

From Shimane Prefecture Population Vision, Oct. 2015

2. Serious regional issues caused by the decline in population (excerpt.)

- (1) Decrease of the younger generation ⇒ shortage of workers in the fields such as commerce and industry, agriculture, forestry and fisheries ⇒ shrinkage of local industry and regional economy
- (2) The population decline and the aging of the population ⇒ hinders the regional activities or the handing-down of local culture as well as activities concerning the elderly.
- (3) Fewer services in social life along with the population decline ⇒ ⇒ furthers the population outflow to larger cities

Program for Promoting Regional Revitalization by Universities as Center of Community (COC+ Program)

Regional Revitalization by "All Shimane"

[Goals]

- To improve employment rate in the community
- To increase internship participants in the community
- To increase employees in the community

Support for fostering human resources and increasing in employment

⇒ Improvement of employment rate

[stability of the young generation in Shimane]

- All universities in prefecture joined together
- Mandatory regional subjects
- Minor programs

Fostering human resources

Educational partnership

COC+ Program Coordinator

Shimane Creative Labo Network

Big Interactive Event

Developing Local Companies

Forming Innovative Communities

Collecting the data of local companies

"Making" humans

"Making" the community

"Making" employment

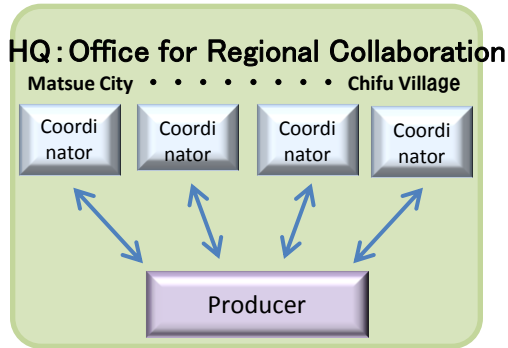
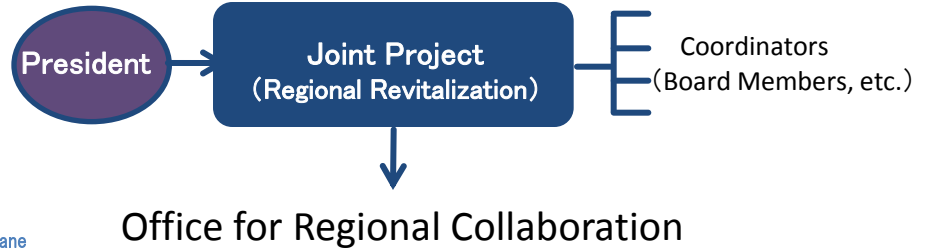
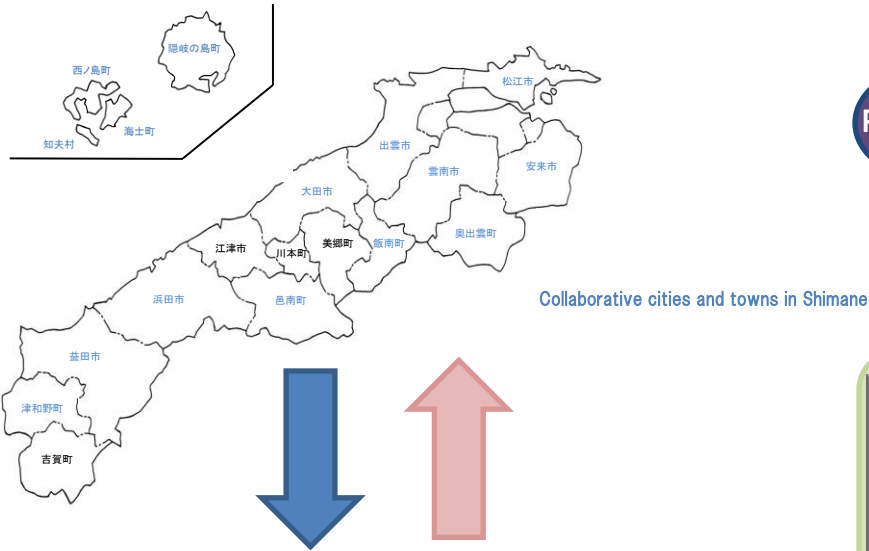
Archive of Regional Information

Strengthening of the regional companies

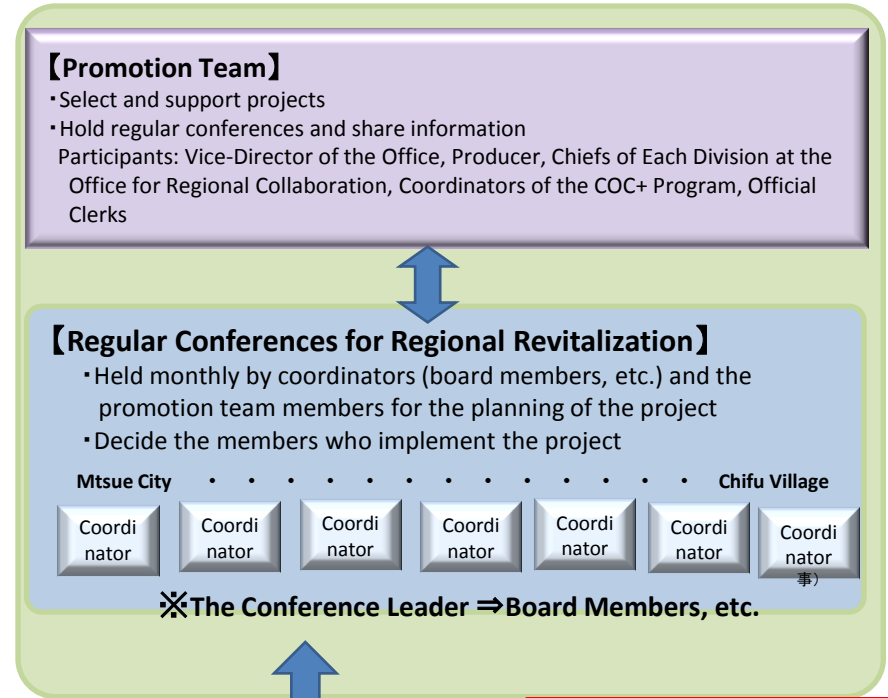
Strategic Center for Regional Collaboration (New)

Joint Projects of Shimane Univ. and the Communities

Regional Revitalization Projects



All Faculties and Centers at Shimane University



Implemented with the support of the promotion team

Regional Coordinators entrusted to the prefectural and city government, the local banks, and other supporting organization in each project.

Course for Fostering Regional and Educational Coordinators

—Developing a New Educational Program in the Remote Islands or the Mountainous Areas—

Cordinators



Ama-cho
(Oki Islands)



Accumulated
Educational and
Research Resources

Center for the Promotion of
Education and Research

Center for Regional
Education
Revitalization

Fostering Human
Resources for
Revitalization of the
Regions across the Country

— Remote Island —

Development of the systematic
educational program based on the
practices in Ama-cho and linan-cho

- Offering an Educational Program
- Making a Network of the Students
- Follow-up Research of the Graduates

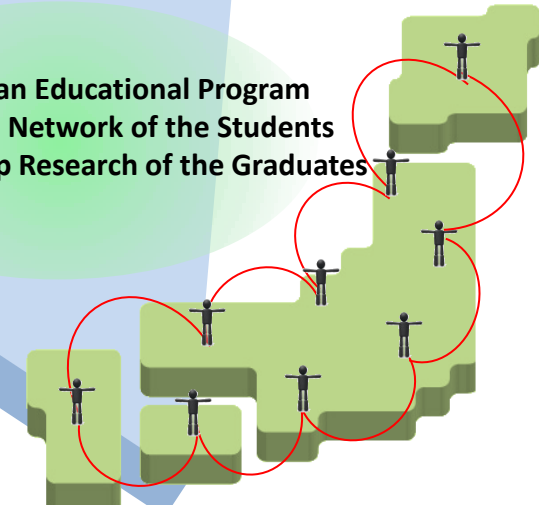
Cordinator



linan-cho
(Iishi County)

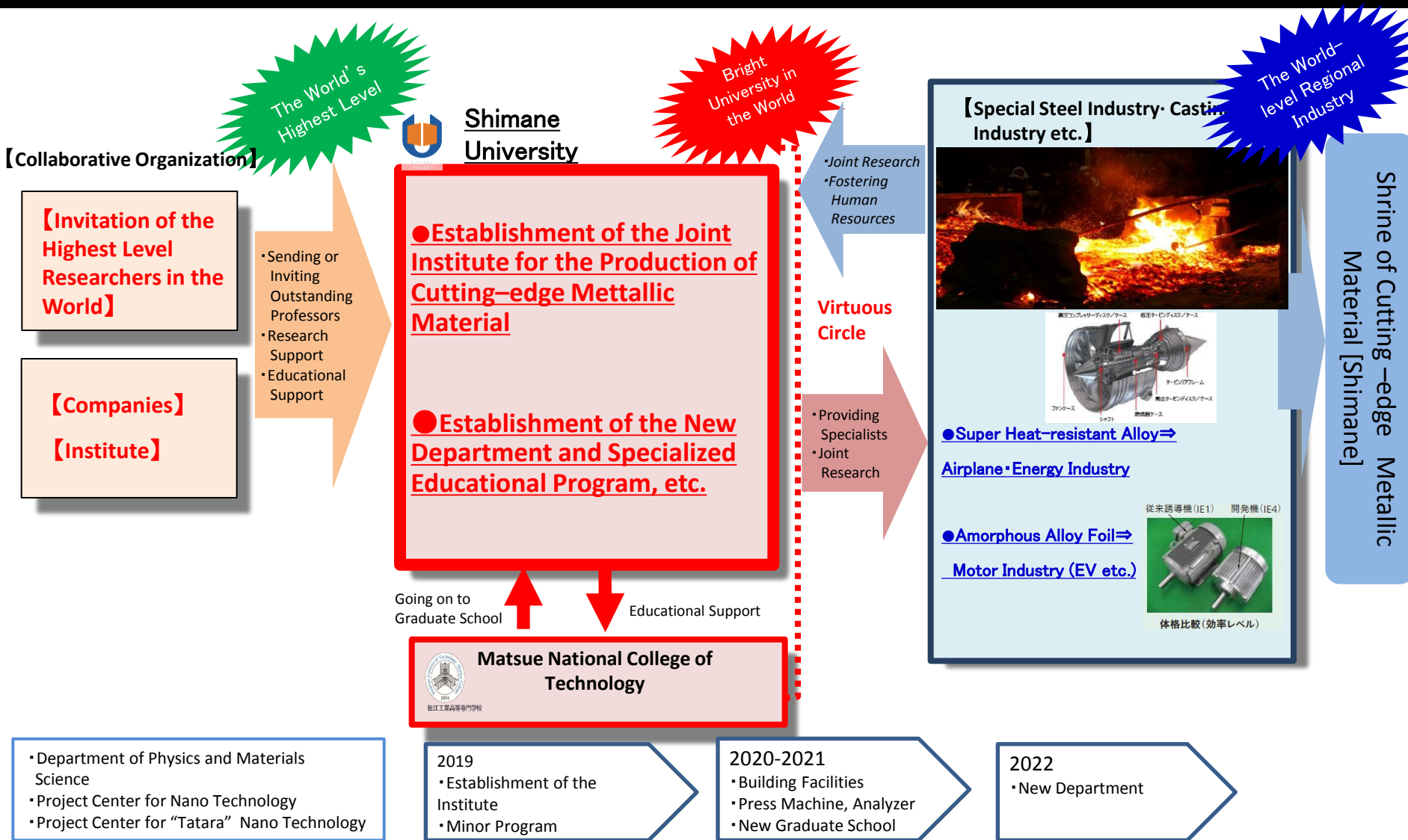


— Mountainous Areas —



Establishment of the Global Center for the Production of Cutting-edge Metallic Material from “Tatara” -Next Generation TATARA Project— Shimane University’s Dream Comes True

Operating Cost:
About 6 billion yen
(five years)



Thank you for your attention

