

Members of the JANU

● Regular Members (86 national universities)

● Special Members (4 organizations)

National Institutes for the Humanities,
National Institutes of Natural Sciences,
High Energy Accelerator Research Organization,
Research Organization of Information and Systems

Nation of Knowledge

Tokyo Branch

(12 universities)

The University of Tokyo,
Tokyo Medical and Dental University,
Tokyo University of Foreign Studies,
Tokyo Gakugei University,
Tokyo University of Agriculture and Technology,
Tokyo University of the Arts,
Tokyo Institute of Technology,
Tokyo University of Marine Science and Technology,
Ochanomizu University,
The University of Electro-Communications,
Hitotsubashi University,
National Graduate Institute for Policy Studies

Kanto-Koshin'etsu Branch

(14 universities)

Ibaraki University, University of Tsukuba,
Tsukuba University of Technology, Utsunomiya University,
Gunma University, Saitama University, Chiba University,
Yokohama National University,
SOKENDAI(The Graduate University for Advanced Studies),
Niigata University, Nagaoka University of Technology,
Joetsu University of Education,
University of Yamanashi, Shinshu University

Tokai-Hokuriku Branch

(12 universities)

University of Toyama, Kanazawa University,
Japan Advanced Institute of Science and Technology,
University of Fukui, Gifu University,
Shizuoka University,
Hamamatsu University School of Medicine,
Nagoya University,
Aichi University of Education,
Nagoya Institute of Technology,
Toyohashi University of Technology,
Mie University

Chugoku-Shikoku Branch

(10 universities)

Tottori University, Shimane University,
Okayama University, Hiroshima University, Yamaguchi University,
Tokushima University, Naruto University of Education,
Kagawa University, Ehime University,
Kochi University

Kyushu Branch

(11 universities)

University of Teacher Education Fukuoka, Kyushu University,
Kyushu Institute of Technology,
Saga University, Nagasaki University,
Kumamoto University, Oita University,
University of Miyazaki, Kagoshima University,
National Institute of Fitness and Sports in Kanoya,
University of the Ryukyus

Hokkaido Branch

(7 universities)

Hokkaido University,
Hokkaido University of Education,
Muroran Institute of Technology,
Otaru University of Commerce,
Obihiro University of Agriculture and Veterinary Medicine,
Asahikawa Medical University,
Kitami Institute of Technology

Tohoku Branch

(7 universities)

Hirosaki University,
Iwate University,
Tohoku University,
Miyagi University of Education,
Akita University,
Yamagata University,
Fukushima University

Kinki Branch

(13 universities)

Shiga University,
Shiga University of Medical Science,
Kyoto University,
Kyoto University of Education,
Kyoto Institute of Technology,
Osaka University,
Osaka Kyoiku University,
Hyogo University of Teacher Education,
Kobe University,
Nara University of Education,
Nara Women's University,
Nara Institute of Science and Technology,
Wakayama University

Access



Directions

By subway

3-minutes walk from Jimbocho Station, Exit A8
Take Hanzomon Line (Tokyo Metro), Mita Line (Toei),
or Shinjuku Line (Toei)
4-minutes walk from Takebashi Station, Exit 1B
Take Tozai Line (Tokyo Metro)

By car

Take Metropolitan Expressway and get off at Daikancho
Exit, Kandabashi Exit or Hitotsubashi Exit.



The Japan Association of
National Universities

<https://www.janu.jp/>

National Center of Sciences Bldg. 4F
2-1-2 Hitotsubashi, Chiyoda-ku, Tokyo 101-0003, Japan
Tel:+81-3-4212-3506 Fax:+81-3-4212-3509 E-mail:info@janu.jp

The Japan Association of
National Universities

2019



The Japan Association of
National Universities

Message from the President

With the rapid progression of globalization, the world is confronting major turning points in many areas. In Japan, too, simultaneously with the realization of Society 5.0 based on the cornerstone of rapid development in digital science, we are searching for solutions to the issues due to declining population, for responses to the coming era of 100-year lifespan, for the development of strong regionally-based societies, and so on. Globalization itself is also transitioning from competition to competition and cooperation. To resolve these issues, we cannot rely solely on our past experiences and methods.



JANU President
NAGATA, Kyosuke
(University of Tsukuba)

There are 86 national universities in Japan, each with their own unique characteristics. At these universities, approximately 60,000 faculty members are educating over 590,000 undergraduate and graduate students, while individually pursuing their own unique research. This diversity is the source of our ability to flexibly handle the increasingly complex and ever-changing future that cannot be extrapolated from the past.

Located in every prefecture and metropolitan area, Japanese national universities have played a central role in regional revitalization through developing innovation and nurturing top-class graduates. The national universities are the core entities for supporting their respective region's culture, society and economy, and are keenly aware of their responsibilities towards their region's industry, medical care, welfare, and education. Against the backdrop of the above-mentioned paradigm shift, regional development has become one of Japan's most dire challenges. We, the Japan Association of National Universities, believe that it is our duty to respond to the heightened expectations placed on us.

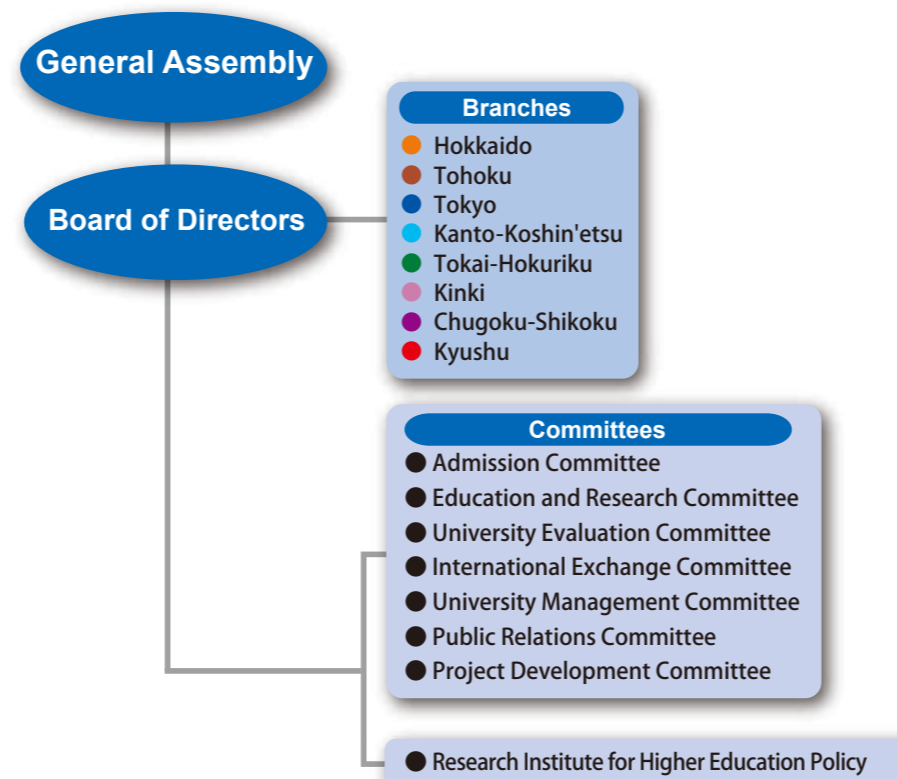
After leaving university, graduates will enter into a world that is increasingly VUCA, or characterized by volatility, uncertainty, complexity and ambiguity. They will have to define their own future, discover the tasks that need to be accomplished by humanity, and strive to create new value. If we accept that a system of higher education that is grounded in advanced research is essential for nurturing such human resources, we must enhance our research abilities. Accordingly, we are expected to further promote a high standard of research and increase our international competitiveness based on strengthening our graduate schools.

In addition, we must exert greater efforts on finding new and previously undiscovered talent, while at the same time increasing our enrollment of foreign nationals and recurrent students in order to ensure that we have the necessary numbers of high-level human resources for the future development of our society. For this purpose, we must reform our system of education and enrich our educational content.

For national universities to play this important role, each national university must make full use of their unique advantages, while, at same time, work together as a whole to bring forth and ensure a bright future for our society. It is important that all 86 national universities unite in their support of each region and the nation, as well as work a long side with our fellow international partner institutions on a global scale. It is the mission of the Japan Association of National Universities to support these goals.

We look forward to and are grateful for all your continued support.

Organization Chart



Governance

(As of June 11, 2019)

Board Members

•Members of the Board

NAGATA, Kyosuke / President / President, University of Tsukuba
 NISHIO, Shojiro / Vice President / President, Osaka University
 OHNO, Hideo / Vice President / President, Tohoku University
 YAMAZAKI, Koetsu / Vice President / President, Kanazawa University
 HAYASHI, Kayoko / Vice President / President, Tokyo University of Foreign Studies
 YAMAMOTO, Kenji / Senior Managing Director / Former President, Wakayama University
 TOWATARI, Hayashi / Managing Director / Director-General, JANU
 WADA, Tateo / President, Otaru University of Commerce
 OKUDA, Kiyoshi / President, Obihiro University of Agriculture and Veterinary Medicine
 SATO, Kei / President, Hirosaki University
 MASU, Kazuya / President, Tokyo Institute of Technology
 MUROFUSHI, Kimiko / President, Ochanomizu University
 YAMAGUCHI, Hiroki / President, Saitama University
 TOKUHISA, Takeshi / President, Chiba University
 HAMADA, Kunihiko / President, Shinshu University
 MATSUO, Seiichi / President, Nagoya University
 YAMAGIWA, Juichi / President, Kyoto University
 IDA, Ryuichi / President, Shiga University
 HATTORI, Yasunao / President, Shimane University
 OCHI, Mitsuo / President, Hiroshima University
 OKA, Masaaki / President, Yamaguchi University
 KAKEHI, Yoshiyuki / President, Kagawa University
 KUBO, Chiharu / President, Kyushu University
 KOHNO, Shigeru / President, Nagasaki University

•Auditors

OHNO, Hiroyuki / President, Tokyo University of Agriculture and Technology
 TADENUMA, Koichi / President, Hitotsubashi University

Special Adviser

GONOKAMI, Makoto / President, The University of Tokyo
 YAMAGIWA, Juichi / President, Kyoto University

Assistants to President

HASEGAWA, Mariko / President, SOKENDAI (The Graduate University for Advanced Studies)
 GOTO, Hitomi / President, Aichi University of Education
 KOMADA, Yoshihiro / President, Mie University
 MORISAKO, Kiyotaka / President, Kyoto Institute of Technology
 OIE, Yuji / President, Kyushu Institute of Technology
 FUJII, Ryoichi / President, Research Organization of Information and Systems

Objectives and Activities of JANU

● Objectives of JANU (Article 4 of the Articles of Incorporation)

JANU shall contribute to the promotion of national university corporations and the improvement of standards of higher education and academic research in our nation with well-balanced development, creating the circumstances to ensure outstanding achievements conducted by national university corporations on various activities related to education, research and contribution to the society.

● Activities of JANU (Article 5 of the Articles of Incorporation)

- (1) Activities necessary for national universities to promote high-quality education, academic research, and social contribution
- (2) Studies and research necessary for universities' voluntary policy-making activities as well as for proposals concerning the national government's policies on higher education, academic research, etc.
- (3) International exchange programs based on international partnership
- (4) Support for the management and administration of national university corporations
- (5) Other activities necessary for achieving the objectives of JANU

Major Activities in FY 2018

◎General Assembly meetings and Board of Directors meetings

Ordinary General Assembly meetings (Jun., Nov., Jan., Mar.)
 Board of Directors meetings (Apr., May, Jul., Oct., Dec., Feb.)



Opinion Exchange Meeting with Mr. SHIBAYAMA, Masahiko, MEXT Minister

◎Request and proposal activities

Released "Reference Examples in the Utilization of the English Certification Exam and Description Type Questions (Japanese language) in the Nationwide University Entrance Examinations Framework". (Jun.)
 Released "Encouraging Future Joint Research through Full-fledged Collaborations between Industry, Academia, and Government" (Interim Summary). (Jun.)
 Released "Organization and Governance that Accelerates the Strengthening of National University Functions and the Nature of Legal and Systemic Revisions that Contribute to That (Summary of Issues)". (Jun.)
 Submitted "Requests Regarding and Securing a Sufficient National University-related Budget and Tax Revisions for Fiscal Year 2019". (Aug., Sep.)
 Released "Measures for Investing the Management Expenses Grants According to the Purpose of the National University Corporation System! (Statement)". (Nov.)
 Released "Basic Concepts Underpinning Human Resource and Wage Management Reform to Promote Revitalization of National University Education and Research". (Nov.)
 Released "The President's Comments on the National University-related Budget and Tax Revisions for Fiscal Year 2019". (Jan.)
 Released "Policy Regarding the Handling of Publication of Examination Questions and Sample Answers Concerning the Selection of National University Entrants". (Jan.)



2018 Japan-UK Dialogue on Exchange in Higher Education & Research

◎International activities

2018 Australia-Japan Innovation and Research Symposium Kyoto & Japan-Australia Short-term Staff Exchange and Training Program (Oct.)
 2018 Japan-UK Dialogue on Exchange in Higher Education & Research (Oct.)
 2018 Japan - France Symposium in Higher Education (Dec.)

◎Seminars and training sessions

Liaison Meeting for Board Members of National Universities (Jun., Oct.), Seminar for Newly Appointed Presidents (Jun., Mar.), Workshop for National University General Insurance (Jul.), Training Session for Section/Department Managers of National Universities (Jul.), "Top Seminar" (Aug.), University-Design-Workshop (Aug.), University Reform Symposium (Oct.), University Management Seminar (Nov.), Study Session for Young Staff of National Universities (Dec.), Liaison Committee of Public Relations Officials of National Universities "Study Session for Public Relations" (Jan.),

◎Publication and public relations

Public relations magazine "National Universities" published (Jun. Sep., Dec., Mar.)
 Extra issue of the public relations magazine "National Universities" published (Jul.)
 Discussion meeting with editorial writers held (Oct.)



Public relations magazine "National Universities" published