

**2019 Global Connections between the UK Universities
12th of June, 2019**

Yasuki Ishizaki, M.D., Ph.D.

**Dean, Gunma University Graduate School of Medicine
Gunma University**

Higher Education Systems and University Governance

Challenges and Opportunities across Japan
and specifically Gunma



Gunma
University

Outline

1. Japan's Higher Education and Challenges Surrounding Universities
2. Overview of Gunma University
3. University Reform at Gunma

1.

Japan's Higher Education and Challenges Surrounding Universities

Japan's Higher Education in Context

2004

Becoming a corporation

→ In practice, MEXT has maintained a role in the governance of Japan's national universities

2012

The Abe Government

→ A sweeping set of reforms of higher education

- Increasing institutional autonomy
- Internationalisation of higher education

2016

Third Mid-term Goals & Mid-term Plans

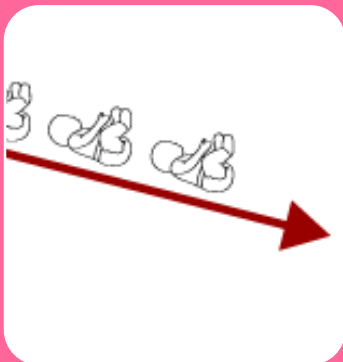
- Raising the international profile of Japan's universities, and promoting research innovation

Challenges Surrounding Universities 1



Society 5.0 and Changes in Industrial and Societal Structures

→ Formulate a strategy for developing human resources in science and technology to promote industrial innovation



Decline in 18-Year Old Population

→ Find new candidates (e.g. international students, part-time adult students) and creating infrastructure to support them

Challenges Surrounding Universities 2



Global Issues as SDGs and Social Responsibility

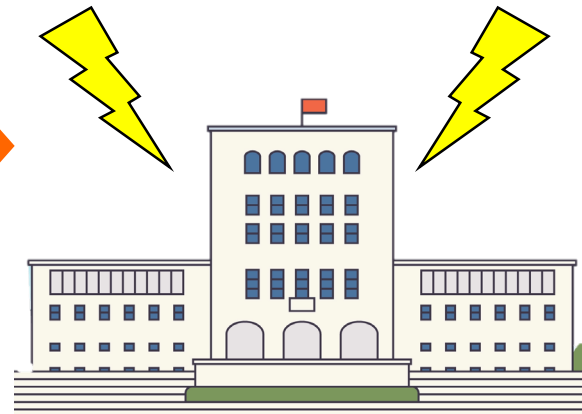
→ Enhance the role of universities in promoting sustainable development and international cooperation



Globalisation of Higher Education and Intensifying International Competition

→ The status of Japan's Universities in global higher education rankings

The government's
higher education
policy reform



Social & Economic
Challenges

Accelerate University Reform under the strong
leadership of the President



**Reform Management and
Governance System
at Gunma University**

2.

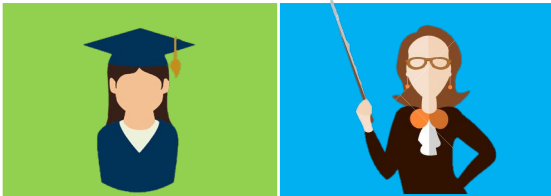
Overview of Gunma University

Gunma University – our three campuses



Aramaki

Education, Social & Information Studies



Student

Faculty

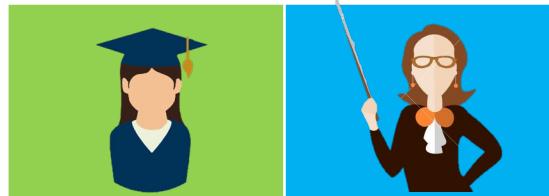
1,518

202



Showa

Medicine, Health Sciences



Student

Faculty

1,887

519



Kiryu

Science & Engineering



Student




Faculty

3,056

192

Gunma University

Top Japanese Universities by Brand Power by Region

Region	University	University Type	Location	University Brand Power (Rate of Growth)		
				2018	2017	2018-2017
Hokkaido	Muroran Institute of Technology	National	Muroran	51.7	50.8	0.9 
Tohoku	Iwate Prefecture University	Public	Iwate	50.5	47.8	2.7 
Kanto	Gunma University	National	Gunma	56.2	54.3	1.9 

Nikkei BP

Gunma University has experienced the greatest advance in the ranking of its brand power of all Kanto region universities

Board of Directors

President

Trustee for
Education

Trustee for
Research

Trustee for
**Financial
Affairs**

Trustee for
Hospital

Trustee for
**Gender
Equality**

Strategic Planning Committee

Administrative Council

Education & Research Council

- Management body that can coordinate and decide resource allocation

3.

University Reform at Gunma

University Reform at Gunma

Quality Enhancement (Education, Research)

1. The consolidation of humanities & social sciences
2. Internationalisation of curriculum and university programmes

Inter-University Collaboration & Regional Invigoration

1. Inter-University Curricula
2. Establishment of Centre of Regional Medical Research & Education

Reform Management

1. Increased Discretionary Expenses of the President
2. Increasing the amount of private sector research grants

University Reform at Gunma

Regional Invigoration

Centre of Regional Medical Research & Education



- ◆ Promote of medical education, career development and patient safety at the regional level
- ◆ Promote the attraction and retention of physicians in the region
- ◆ Providing equal access to physicians for regional patients

University Reform at Gunma

Reform Management

Centre for Research on Adoption of NextGen Transportation Systems

- ◆ Promoted large-scale joint research through collaboration between universities and private sectors
→ 10 projects, 69,479,000JPY



Joint Research of Carbon Alloy Catalysts

- ◆ Received an additional 35,315,000JPY

群を抜け、駆ける、世界を
**Break your boundaries,
Go Global from Gunma**

GUNMA UNIVERSITY

Thank you