

The Japan Association of
National Universities

2026



The Japan Association of
National Universities

Message from the President



JANU President
FUJII Teruo (The University of Tokyo)

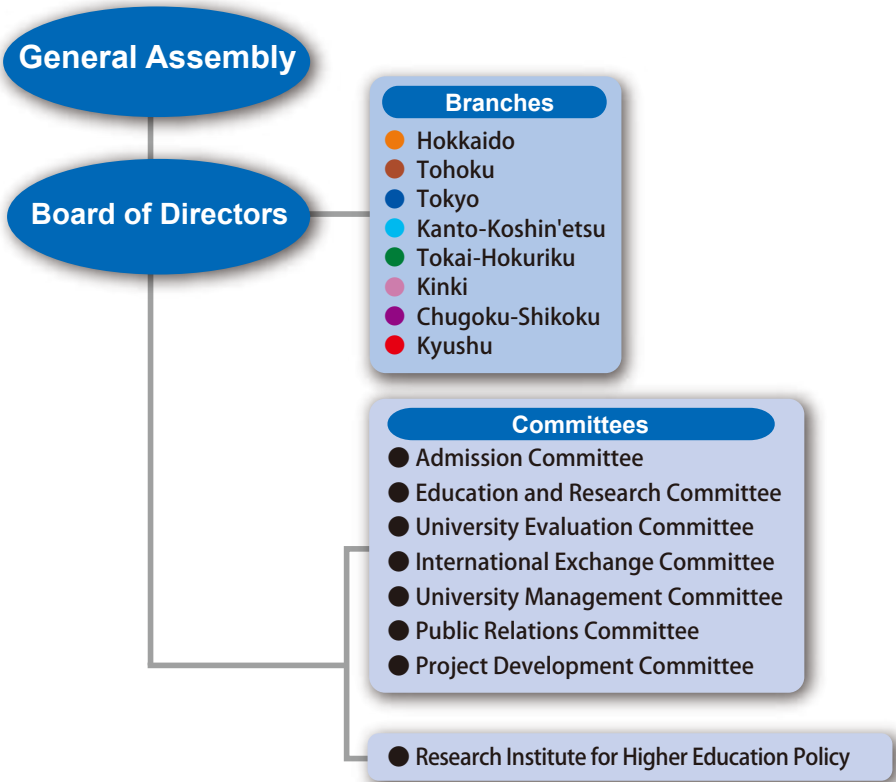
Japan's 85 national universities, long established as centers of knowledge across the country, play a vital role in the nation's development. They are global research hubs that, both individually and collectively, conduct world-leading research. Regional national universities also serve as gateways between their areas and the world: hosting international students, facilitating student exchanges, and playing a central role in the globalization of their regions by supporting the overseas expansion of local industries and the recruitment and development of international talent.

Yet the potential of these universities is greater still when they work not only as individual institutions but as a coherent whole. That is the conviction behind "The Future Vision of Japan's National Universities," published by the Japan Association of National Universities (JANU) in March 2025. This document sets out the shared resolve of all of the national universities to come together as a national university system—a single, flexible framework in which each university draws on its distinctive strengths—and to take on the challenge of creating a more innovative Japanese society.

Since assuming the JANU presidency, I have established a working group to realize this vision of a new national university system. The working group has set up dedicated taskforces on key themes such as human resource development, educational collaboration, and regional revitalization. Each taskforce is identifying challenges and clarifying roles while formulating strategies and proposals to improve existing systems.

Through these efforts, and through continued dialogue with society and the public, we are committed to enhancing our nation's collective knowledge and making meaningful contributions to transforming Japanese society, nurturing a prosperous future, and building a peaceful and secure international community.

Organization Chart



Governance

(As of April 1, 2026)

Board Members

•Members of the Board

FUJII Teruo / President / President, The University of Tokyo
HOUKIN Kiyohiro / Vice President / President, Hokkaido University
OCHI Mitsuo / Vice President / President, Hiroshima University
UMEHARA Izuru / Vice President / President, Yokohama National University
KINA Ikue / Vice President / President, University of the Ryukyus

HAYASHI Kayoko / Senior Managing Director / Former President, Tokyo University of Foreign Studies
MURATA Yoshinori / Managing Director / Director-General, JANU

NAGATA Kyosuke / Adviser / President, University of Tsukuba
MATSUDA Mizushi / President, Muroran Institute of Technology
TOMINAGA Teiji / President, Tohoku University
SANO Koji / President, Fukushima University
OHTAKE Naoto / President and Chief Executive Officer (CEO), Institute of Science Tokyo
SASAKI Yasuko / President, Ochanomizu University
YOKOTE Koutarou / President, Chiba University
MATSUO Seiichi / Chancellor, Tokai National Higher Education and Research System
WADA Takashi / President, Kanazawa University
ITO Masaaki / President, Mie University
MINATO Nagahiro / President, Kyoto University
KUMANOGOH Atsushi / President, The University of Osaka
SHIOZAKI Kazuhiro / President, Nara Institute of Science and Technology
SAKO Hidekazu / President, Naruto University of Education
ISHIBASHI Tatsuro / President, Kyushu University
OGAWA Hisao / President, Kumamoto University
SAMESHIMA Hiroshi / President, University of Miyazaki
NAGATA Takashi / President, The Graduate University for Advanced Studies
OKAMOTO Ikuko / President, Osaka Kyoiku University
NASU Yasutomo / President, Okayama University

•Auditors

HARUNA Nobuo / President, Tokyo University of Foreign Studies
UKEDA Hiroyuki / President, Kochi University

Assistants to President

HASEYAMA Akira / Chancellor, Hokkaido Higher Education and Research System
MINAMIYA Yoshihiro / President, Akita University
NAKAMURA Kazuhiko / President, University of Yamanashi
OBATA Makoto / President, Nagoya Institute of Technology
TAKEMURA Akimichi / President, Shiga University
KAWAI Maki / President, National Institutes of Natural Sciences

Objectives and Activities of JANU

Objectives of JANU (Article 4 of the Articles of Incorporation)

JANU shall contribute to the promotion of national university corporations and the improvement of standards of higher education and academic research in our nation with well-balanced development, creating the circumstances to ensure outstanding achievements conducted by national university corporations on various activities related to education, research and contribution to the society.

Activities of JANU (Article 5 of the Articles of Incorporation)

- (1) Activities necessary for national universities to promote high-quality education, academic research, and social contribution
- (2) Studies and research necessary for universities' voluntary policy-making activities as well as for proposals concerning the national government's policies on higher education, academic research, etc.
- (3) International exchange programs based on international partnership
- (4) Support for the management and administration of national university corporations
- (5) Other activities necessary for achieving the objectives of JANU

Major Activities in FY2025

General Assembly meetings and Board of Directors meetings

- General Assembly meetings (Jun., Nov., Jan., Mar.)
- Board of Directors meetings (Apr., May, Jul., Oct., Dec., Feb.)

Request and proposal activities

- Requests regarding the enhancement of a national-university-related budget in the FY2026 national budget and tax system reforms (Aug.)
- Selection of 2025 Nobel Prize laureates (a discourse by the President of JANU) (Oct.)
- Exchange of views and opinions with OHMURA Hideaki (Governor of Aichi Prefecture), Chairperson of the Standing Committee on Education and Sports, National Governors' Association (Oct.)
- Requests and exchange of views and opinions on the compilation of the FY2026 national budget with MATSUMOTO Yohei, Minister of Education, Culture, Sports, Science and Technology (Dec.)
- Exchange of views and opinions with MATSUMOTO Yohei, Minister of Education, Culture, Sports, Science and Technology toward realizing "The Future Vision of Japan's National Universities" (Jan.)
- National university corporation management expenses grants for FY2026 (a comment by the President of JANU) (Dec.)

International Activities

- Joined the 25th Japan-Germany Joint Committee on Cooperation in Science and Technology held by the Ministry of Foreign Affairs of Japan (hybrid meeting/May)
- Joined the Italian Higher Education System at EXPO 2025 Osaka 1st Italian and Japanese Rector's Forum organized by the Conference of Italian University Rectors (CRUI) (Osaka/May)
- Held the 2025 Taiwan-Japan University Presidents' Forum co-hosted with the Foundation for International Cooperation in Higher Education of Taiwan (FICHET) (Kumamoto/July)
- Visit of Jacqui Smith, UK Minister for Skills, and Minister for Women and Equalities, to JANU (July)
- Joined the Global Meeting of Associations held by the International Association of Universities (IAU) (Kigali, Rwanda/Oct.)
- Held the 2025 German-Japanese University Leader's Meeting co-hosted with the German Rectors' Conference (HRK) (online/Dec.)

Seminars and training sessions

- Liaison Meeting for Board Members of National Universities (Jun.)
- National University Corporation Department Managers' Training (Jul.)
- "Top Seminar" (Aug.)
- University-Design-Workshop (Sep.)
- Study Session for Public Relations Personnel at National University Corporations (Oct.)
- Liaison Meeting for Board Members of National Universities (Nov.)
- Study Session for Young Staff of National Universities (Dec.)
- Symposium on Future Co-creation by National Universities (Jan.)
- Seminar for Newly Appointed Presidents (Feb.)

Publication and public relations

- Public relations magazine "National Universities" published (Aug., Nov., Mar.)
- Extra issue of the public relations magazine "National Universities" published (Aug.)



The second Board of Directors meeting (Asahikawa, Hokkaido)



Written request submitted to Mr. TAKEBE Arata, then MEXT State Minister



2025 Taiwan-Japan University Presidents' Forum



Publication of the National Universities magazine and other reports

Members of the JANU

● **Regular Members (81 national university corporations, 85 national universities)**

● **Special Members (4 organizations)**

National Institutes for the Humanities,
National Institutes of Natural Sciences,
High Energy Accelerator Research Organization,
Research Organization of Information and Systems

National sum of knowledge

Tokyo Branch

(11 national university corporations, 11 universities)

- The University of Tokyo,
- Tokyo University of Foreign Studies,
- Institute of Science Tokyo,
- Tokyo Gakugei University,
- Tokyo University of Agriculture and Technology,
- Tokyo University of the Arts,
- Tokyo University of Marine Science and Technology,
- Ochanomizu University,
- The University of Electro-Communications,
- Hitotsubashi University,
- National Graduate Institute for Policy Studies

Kanto-Koshin'etsu Branch

(14 national university corporations, 14 universities)

- Ibaraki University, University of Tsukuba,
- Tsukuba University of Technology, ● Utsunomiya University,
- Gunma University, ● Saitama University, ● Chiba University,
- Yokohama National University,
- The Graduate University for Advanced Studies,
- SOKENDAI,
- Niigata University, ● Nagaoka University of Technology,
- Joetsu University of Education,
- University of Yamanashi, ● Shinshu University

Tokai-Hokuriku Branch

(11 national university corporations, 12 universities)

- University of Toyama, ● Kanazawa University,
- Japan Advanced Institute of Science and Technology,
- University of Fukui, ● Shizuoka University,
- Hamamatsu University School of Medicine,
- Tokai National Higher Education and Research System,
- Gifu University,
- Nagoya University,
- Aichi University of Education,
- Nagoya Institute of Technology,
- Toyoashi University of Technology,
- Mie University

Chugoku-Shikoku Branch

(10 national university corporations, 10 universities)

- Tottori University,
- Shimane University,
- Okayama University,
- Hiroshima University,
- Yamaguchi University,
- Tokushima University,
- Naruto University of Education,
- Kagawa University,
- Ehime University,
- Kochi University

Kyushu Branch

(11 national university corporations, 11 universities)

- University of Teacher Education Fukuoka,
- Kyushu University, ● Kyushu Institute of Technology,
- Saga University, ● Nagasaki University,
- Kumamoto University, ● Oita University,
- University of Miyazaki, ● Kagoshima University,
- National Institute of Fitness and Sports in Kanoya,
- University of the Ryukyus

Hokkaido Branch

(5 national university corporations, 7 universities)

- Hokkaido University,
- Hokkaido University of Education,
- Muroran Institute of Technology,
- Hokkaido Higher Education and Research System,
- Otaru University of Commerce,
- Obihiro University of Agriculture and Veterinary Medicine,
- Kitami Institute of Technology
- Asahikawa Medical University

Tohoku Branch

(7 national university corporations, 7 universities)

- Hirosaki University,
- Iwate University,
- Tohoku University,
- Miyagi University of Education,
- Akita University,
- Yamagata University,
- Fukushima University

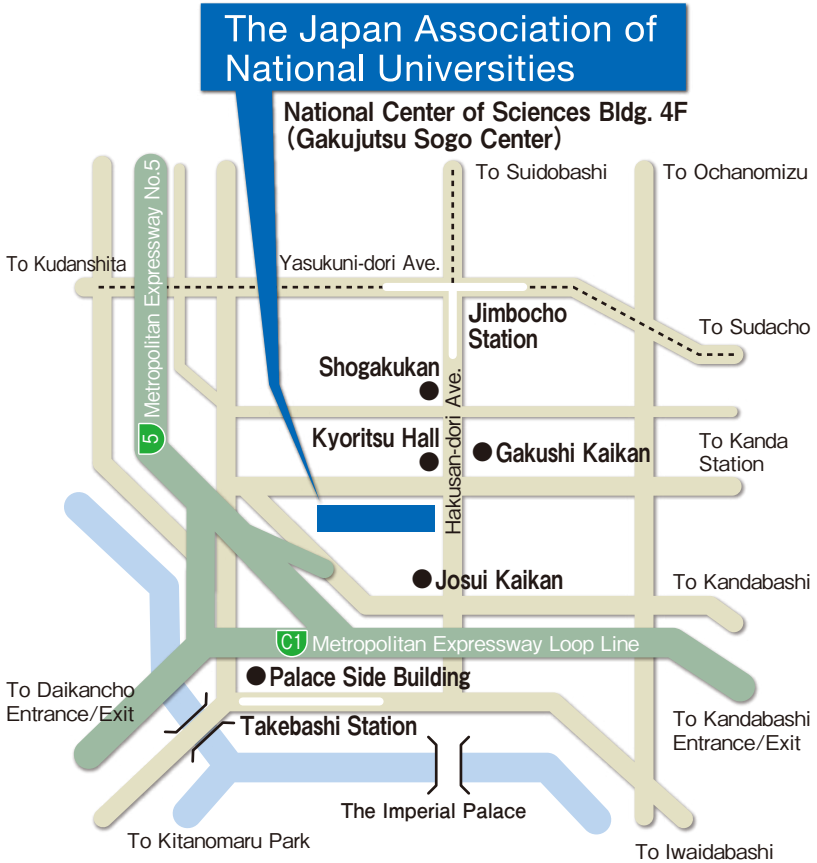
Kinki Branch

(12 national university corporations, 13 universities)

- Shiga University,
- Shiga University of Medical Science,
- Kyoto University,
- Kyoto University of Education,
- Kyoto Institute of Technology,
- Osaka University,
- Osaka Kyoiku University,
- Hyogo University of Teacher Education,
- Kobe University,
- Nara National Institute of Higher Education and Research,
- Nara University of Education,
- Nara Women's University,
- Nara Institute of Science and Technology,
- Wakayama University



Access



Directions

By subway

- 3-minutes walk from Jimbocho Station, Exit A8
Take Hanzomon Line (Tokyo Metro), Mita Line (Toei),
or Shinjuku Line (Toei)
- 4-minutes walk from Takebashi Station, Exit 1B
Take Tozai Line (Tokyo Metro)

By car

- Take Metropolitan Expressway and get off at Daikancho Exit, Kandabashi Exit or Hitotsubashi Exit.



The Japan Association of
National Universities

<https://www.janu.jp/>