

# ***Overview of JACUIE and JANU***

**AIZAWA Masuo**

President, Tokyo Institute of Technology /  
The Japan Association of National Universities  
2 May, 2006

# Japan Committee of Universities for International Exchange (JACUIE)

- Purpose : Promotion of international exchange in the frame of national, public and private universities
- Composition: International committees on behalf of
  - 1)The Japan Association of National Universities (JANU) (87, *President Aizawa Masuo*)
  - 2)The Japan Association of Municipal and Prefectural Colleges and Universities (73, *President Shigeaki UNO* )
  - 3) Federation of Japanese Private Colleges and Universities Association (489, *President Anzai Yuichiro*)
- Installation : 2001

# Current Status of JACUIE

- Chairman : MIYAHARA Hideo  
President, Osaka University
- The latest main activities and a future schedule :
  - Japan-Canada University President's Roundtable    Sept.2004 in Toronto
  - Japan-Germany Symposium on Higher Education    Feb.2006 in Tokyo
  - Japan-France Symposium on Higher Education  
Oct.2006 in Grenoble



# JANU Reformed in 2004

## Voluntary Body

(1945.7-2004.3)

JANU strengthens the connection and cooperation between each National university.

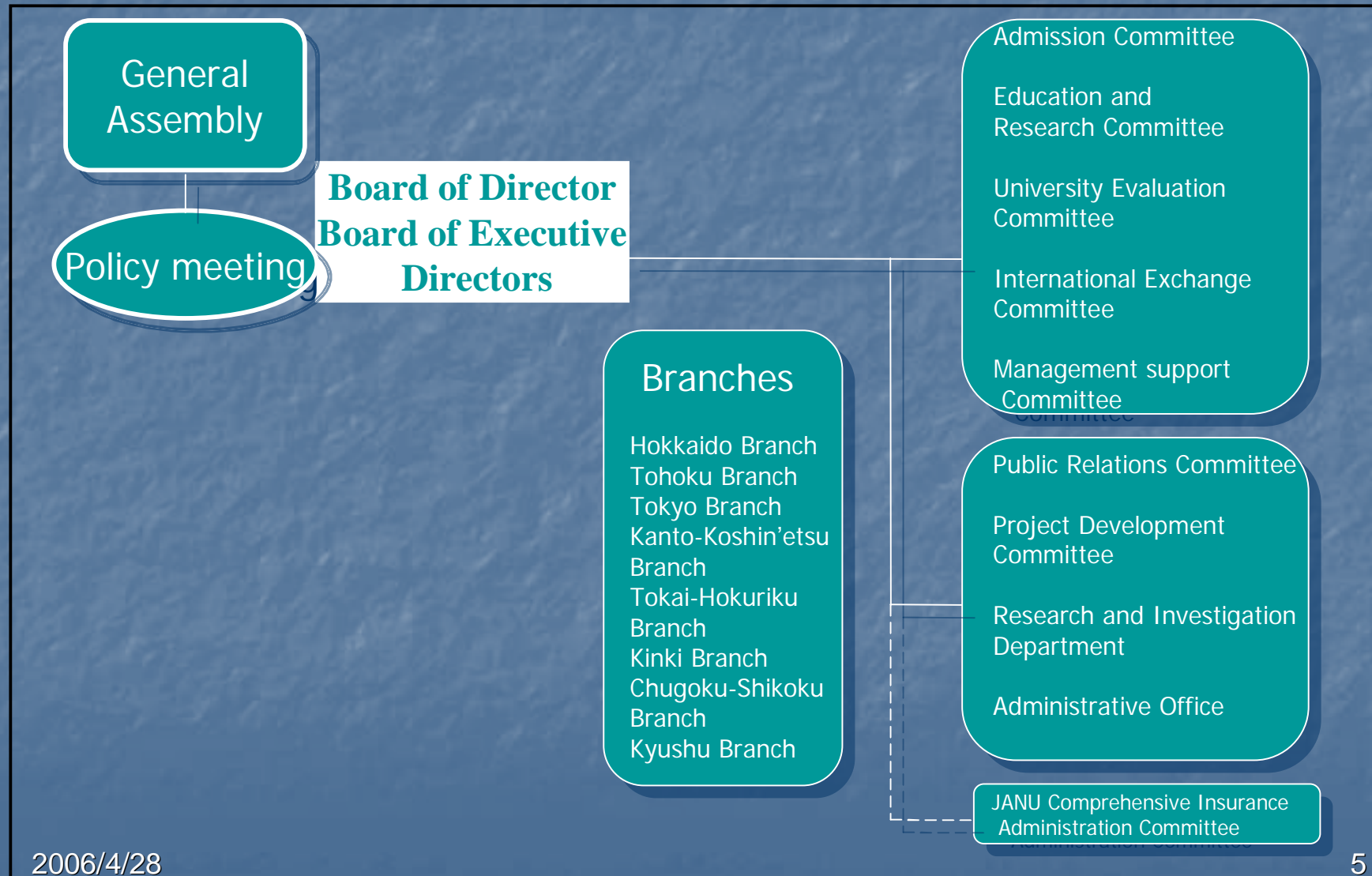
National  
University  
Corporation

**Reformed as  
Corporation  
in April, 2004**

JANU supports positively **the environmental structure which can mention a high quality result** about the activity about the education which the National Universities managed autonomously perform, research, and philanthropy.

***New role***

# Organization of JANU



# Member Universities of JANU

## 《Nation of Knowledge》

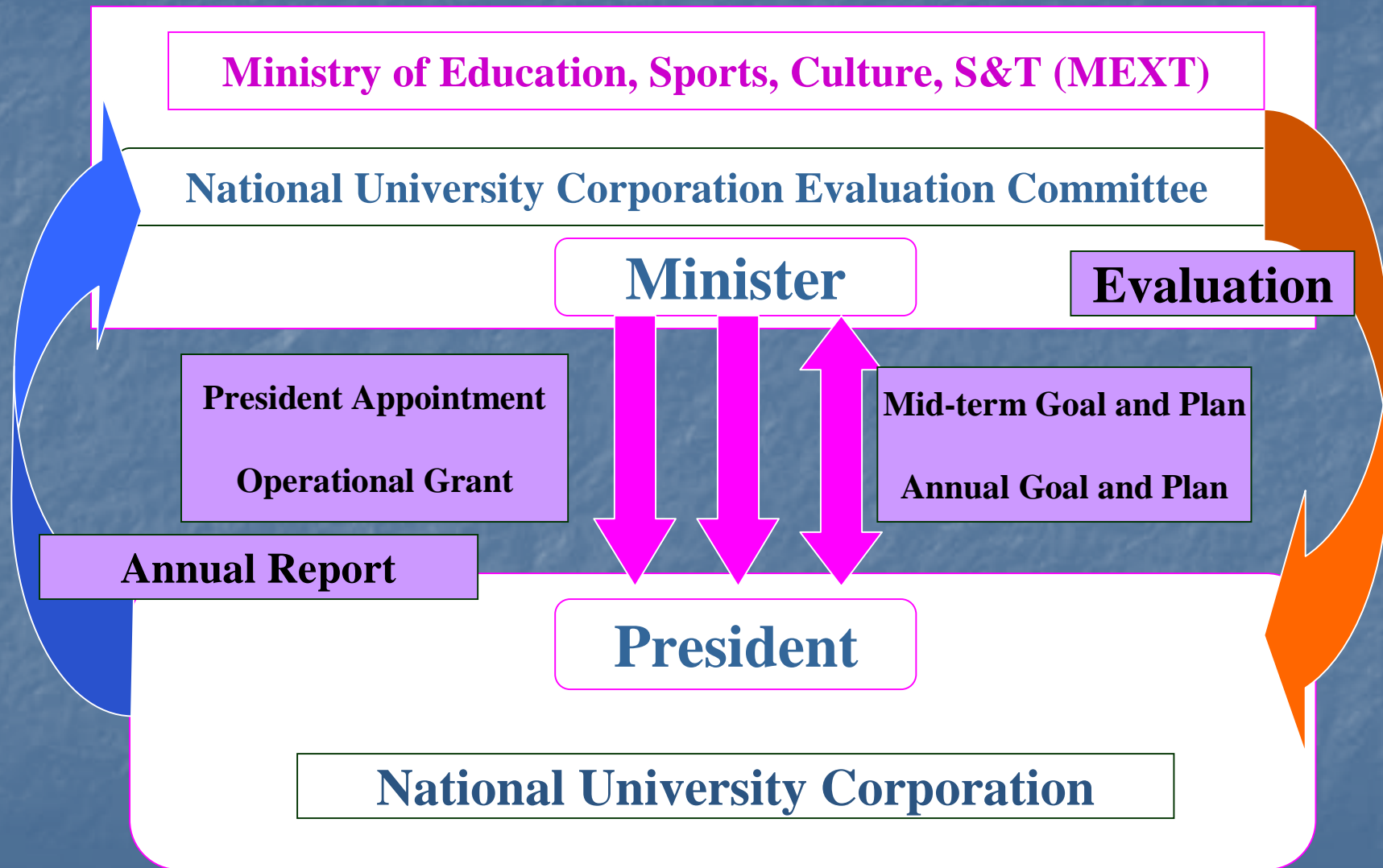
- Regular Member (87 Universities)
- Special Members (4 National Institutes)



# Perspectives of National University Reform

- Enhancing International Competence in Education and Research
  - Universities with Competitive Distinctiveness
- Realizing Strategic Management in Individual National Universities
  - National University Corporations
- Stressing Accountability to the Public and Society
  - Open to the Stakeholders
  - Third Party Evaluation

# Plan-Do-Check-Act System for Nat. Univ. Corporations





# National University Corporation

**President Selection  
Committee**

**President**

**Auditors**

**Management  
Council**

**Board of  
Executive  
Directors**

**Academic  
Council**

**University (School, Graduate School, others)**

# Establishing University Management Systems

- Independent and Autonomous from MEXT
  - President and Board of Directors
  - Non-governmental Employees
- Top-down Management by the President
  - Mission Statement
  - Strategic Management with Leadership
- Accelerated Decision-making
  - Management Council and Academic Council
- Accountability to the Public
  - Auditors, Annual Report



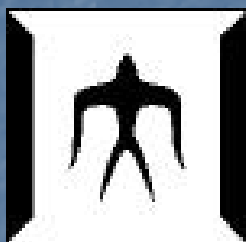
# 社団法人 国立大学協会

The **J**apan **A**ssociation of **N**ational **U**niversities

1-2, Hitotsubashi 2 Chome, Chiyoda-ku, TOKYO 101-0003, JAPAN

TEL: +81 - 3 - 4212 - 3506      FAX: +81 - 3 - 4212 - 3509

URL: <http://www.janu.jp>      E-Mail: [info@janu.jp](mailto:info@janu.jp)



# 国立大学法人 東京工業大学

**T**okyo **I**nstitute of **T**echnology

2-12-1 Ookayama, Meguro-ku, Tokyo 152-8550, JAPAN

TEL: 03 - 5734 - 2039      FAX: 03 - 5734 - 3446

URL: <http://www.titech.ac.jp/home-j.html>      E-Mail: [som.hisyo@jim.titech.ac.jp](mailto:som.hisyo@jim.titech.ac.jp)

*Thank you!*