



University autonomy, governance, and funding

Tisato Kajiyama, D. Eng., Ph. D.

President, Kyushu University



The Role of a University

1 . Developing Human Resources

Fundamental Academic Ability, Originality & Creativity,
Ability of Practical Use of Knowledge,
Management Ability, Sociability & Cosmopolitan Mind,
Moral Sense

2 . Research

Fundamental Research, Applied and Practical Research,
Developing Intellectual Properties

3 . Contributing to Society

Restoring Intellectual Life to Society, Continuing Education,
University-Industry Collaboration

4 . International Cooperation

International Student Education,
International University-Industry Collaboration

Forming COE at Kyushu University



Fields

Education
Research
Social Contribution
International
Cooperation

Future Conception

Developing new
“ creative ” sciences
Enhancing relations
with Asia

Supporting by Evaluation

Supporting human
resources
Servicing facilities
Supporting budget
Expanding time for
education and research

4 + 2 + 4
Kyushu University Action Plans

The 21st Century COE Program

Reforming organization for education and research
Developing and expanding our social contribution
and international cooperation



Kyushu University's Future Vision

1. Developing New “Creative” Sciences

International collaboration for creative development in the humanities, social sciences and natural sciences

2. Focus on Asia

- Developing relations based on past cooperative activities
- Kyushu University's role in Asia
- Rapid change in Asian societies



Necessity of Reforming the Education System

Education for fostering responsiveness

Education for cultivating a sense of social responsibility

Education for expanding social sense and cosmopolitanism

Education for developing originality and creativity

Education for obtaining professional qualifications

The 21st Century Program



What is the 21st Program?

Fostering “highly qualified generalists with well-educated specific skills”

Kyushu’s Original Selective Examination

Original selection without taking the examination

by the National Center for University Entrance Examination

First Exam. : Listening to three lectures and writing reports

Secondary Exam : Debate Short thesis Interview

Kyushu’s Original Education Program

not belonging to any faculty but deciding their majors through activities

Intensive General Education and Language Training

Tutorial System

Visiting lecturers in various fields

Continuing Education at Universities Professional Graduate Schools



- * Reduction of 18-year-old population
- * Need for “skill-up”
- * Education for practical business
- * Producing professionals with a wide range of specialties



Kyushu University Professional Graduate Schools

Health Care Administration and Management

Business School

Law School

Kansei Design School

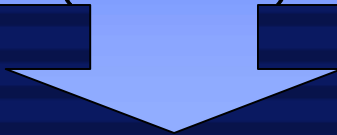
Intellectual Property Management School

Management Training School

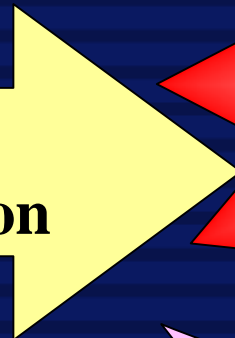
Integration with Kyushu Institute of Design



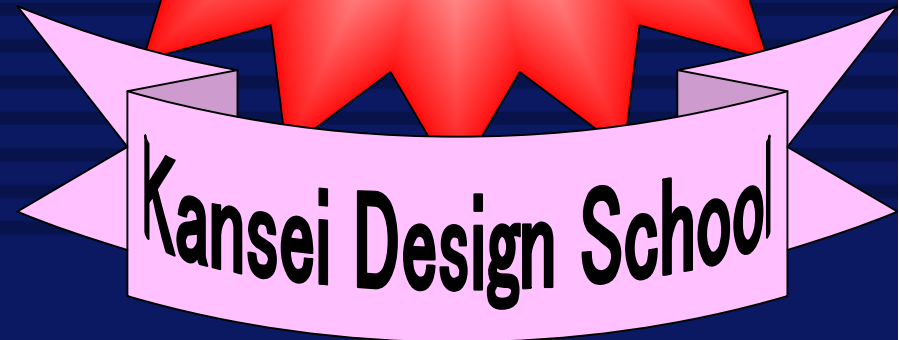
**Kyushu Institute of
Design
(Kansei)**



**Symbiotic relation
with creative tension**



**Creating a New
Academism**



**Kyushu University
(Integrated Sciences)**





Constructing and Developing Fundamental Research at National University Corporations

1. Significance of Fundamental Research

- Creating possibilities for the next generation
- Taking pride in the fact that fundamental research is ongoing
- Hoping to create new fundamental research

2. Securing Resources under the leadership of the President

3. Importance of Making a Social Contribution

- Attaching importance to *outcome* rather than *output*
- Developing applied and practical research based on fundamental research
- The centrality of University-industry collaboration
- Improving international cooperation

Research towards a hydrogen fuel consuming society

New Campus Plan

- Opened in October, 2005
- Relocating three campuses



Hydrogen Campus Project

Hydrogen Technology Research Center



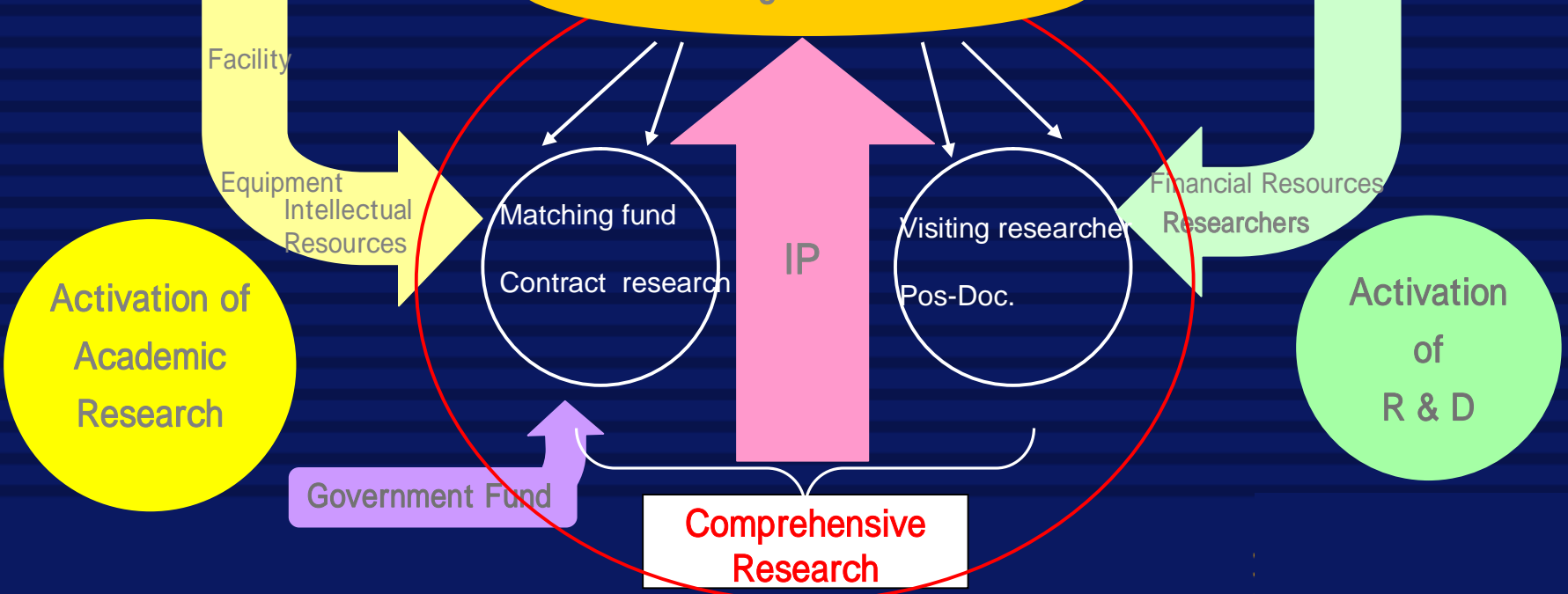
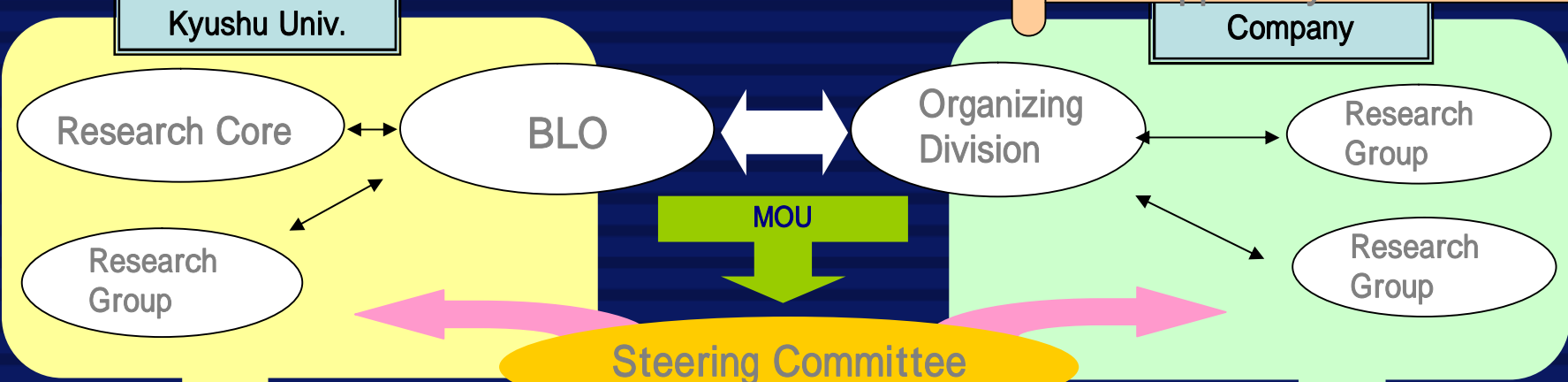


Examples of Kyushu University's “cutting edge” Research

- *“Plasma Turbulence”*
- *“Functional Innovation of Molecular Informatics”*
- Establishment of “Kyushu University User Science Institute”
 - fuse technology with Kansei from a point of user’s view
 - establish the center of research and education to create a “user-friendly” science

Comprehensive Collaboration Scheme at Kyushu University

- Clear goals
- Process management
- Interdisciplinary research
- Full support by BLO



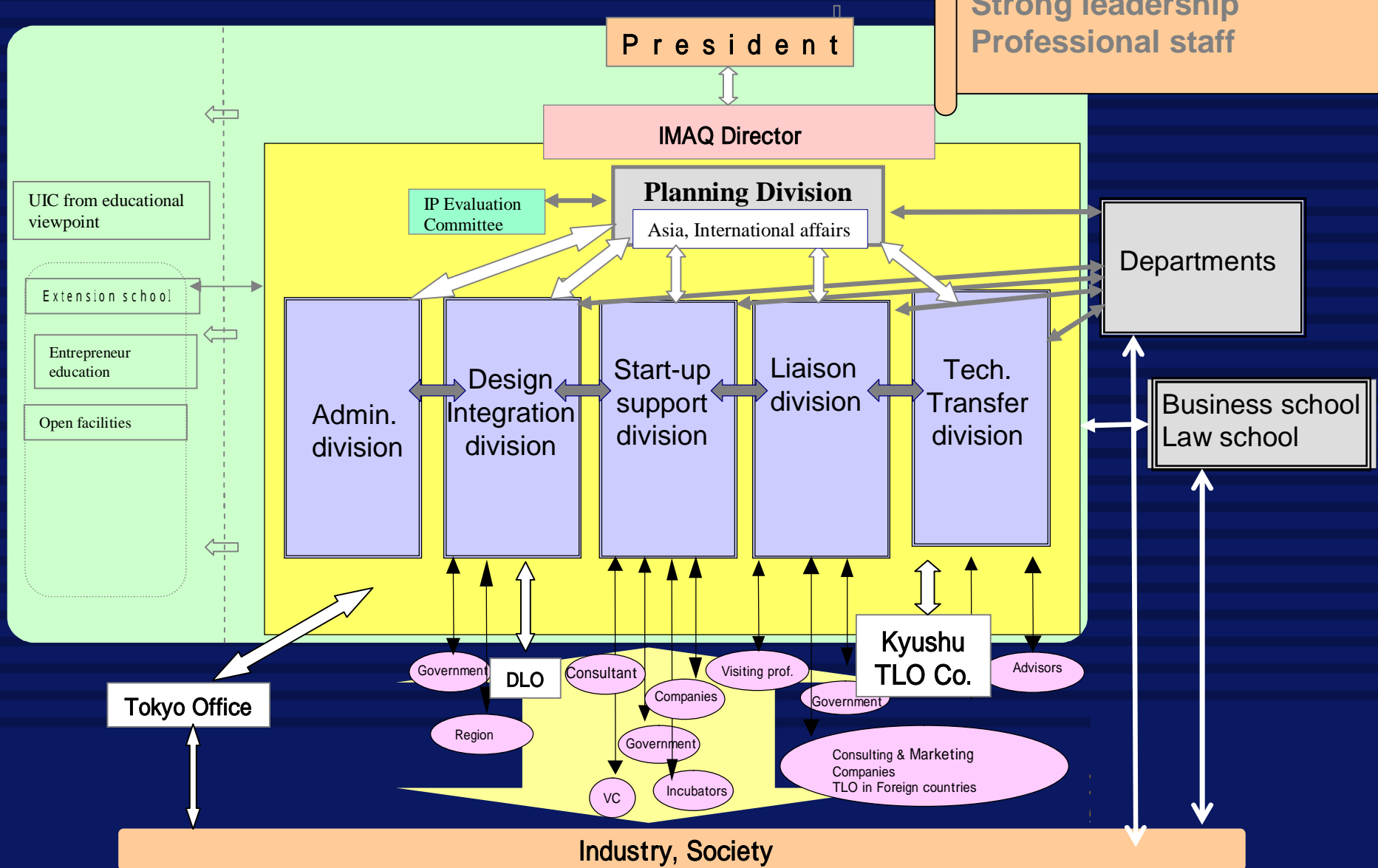


Comprehensive Cooperation Agreements

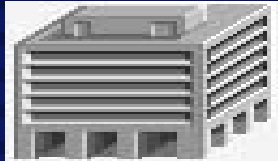
- **Kyudai-TOTO Business College**
 - cooperation to cultivate TOTO staff by Kyushu University Business School academic staff
- **Agreement with an advertising service industry, DENTSU KYUSHU INC.**
 - cooperation for development in the areas of “design” and “communication”
- **Agreement with a telecommunication industry, NTT**
 - cooperation for the development of new creative research
- **Agreement with a research/technology support service industry, JEOL DATUM LTD.**
 - cooperation for promotion of a nano-tech industry

Intellectual Property Management Center (IMAQ)

Related to Asia
 Design and tech. Integration
 One stop support center
 Strong leadership
 Professional staff



Kyushu/Shanghai International Project on University- Industry Collaboration



**Shanghai Jiao Tong University
(Univ.'s NPO)**



**Kyushu University
(Committee of Industry-Local Gov. and Univ.)**

**Coordination
for
Collaboration**

**Manufacturing Industries
around
Shanghai area**

**Collaboration of
Technology and Business**
**Exchange of
Human resources**

**Manufacturing Industries
around
Kyushu Area**

**Skilling up at a
Technology Level**

**Developing Business
opportunities**

Strategic International Project



Holding of the Conference of Asian University Presidents

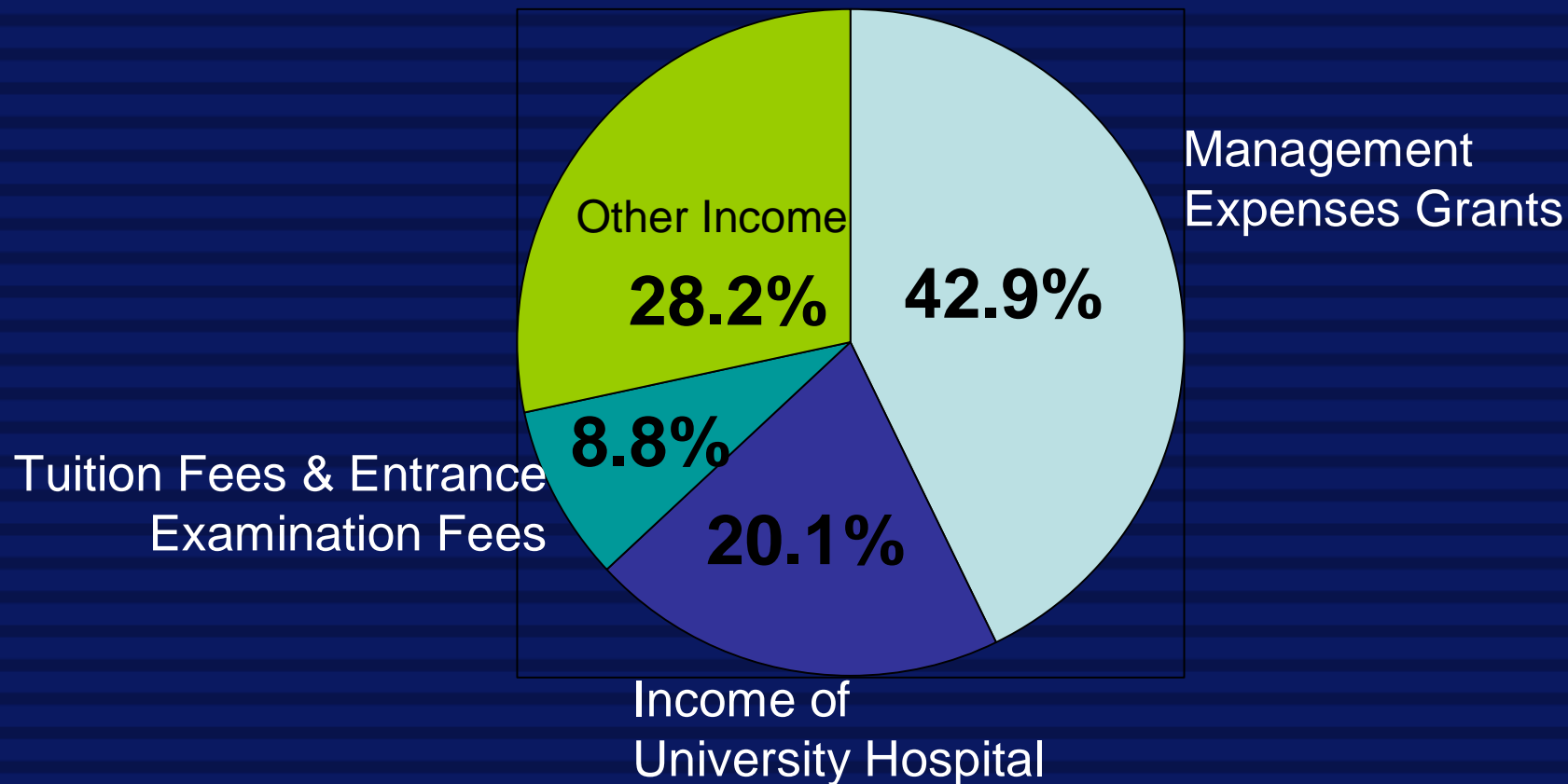




Accomplishments of the conference

- **Branch Offices**
 - promote and support academic exchange, student exchange and collaborative research, as well as to disseminate and collect academic information
- **ASEP (Asian Student Exchange Program)**
 - Support the promotion of student exchanges among Asian universities and transfer of credits with major Asian Universities and provision of economical support such as scholarships for the students

University Income



Grants for Scientific Research from Ministry of Education,
Science, Sports and Culture

Funded Projects: 1,475



University autonomy, governance, and funding

**Tisato Kajiyama, D. Eng., Ph. D.
President, Kyushu University**