

Member Universities of the JANU

Regular Member (89 National Universities)

Hokkaido Branch (7 Universities)

Hokkaido University, Hokkaido University of Education, Muroran Institute of Technology, Otaru University of Commerce, Obihiro University of Agriculture & Veterinary Medicine, Asahikawa Medical College, Kitami Institute of Technology

Tohoku Branch (7 Universities)

Hiroaki University, Iwate University, Tohoku University, Miyagi University of Education, Akita University, Yamagata University, Fukushima University

Tokyo Branch (11 Universities)

The University of Tokyo, Tokyo Medical and Dental University, Tokyo University of Foreign Studies, Tokyo Gaiyaku University, Tokyo University of Agriculture and Technology, Tokyo National University of Fine Arts and Music, Tokyo Institute of Technology, Tokyo University of Marine Science and Technology, Ochanomizu University, The University of Electro-Communications, Hitotsubashi University

Kanto-Koshin'etsu Branch (15 Universities)

Ibaraki University, University of Tsukuba, Utsunomiya University, Gunma University, Saitama University, Chiba University, Yokohama National University, Niigata University, Nagasaki University of Technology, Joetsu University of Education, Yamanashi University, Shinshu University, The Graduate University for Advanced Studies, National Graduate Institute for Policy Studies, Tsukuba College of Technology

Tokai-Hokuriku Branch (14 Universities)

Toyama University, Toyama Medical and Pharmaceutical University, Kanazawa University, Fukui University, Gifu University, Shizuoka University, Hamamatsu University School of Medicine, Nagoya University, Aichi University of Education, Nagoya Institute of Technology, Toyohashi University of Technology, Mie University, Japan Advanced Institute of Science, Takasaka National College

Kinki Branch (14 Universities)

Shiga University, Shiga University of Medical Science, Kyoto University, Kyoto University of Education, Kyoto Institute of Technology, Osaka University, Osaka University of Foreign Studies, Osaka Kyokai University, Hyogo University of Teacher Education, Kobe University, Nara University of Education, Nara Women's University, Wakayama University, Nara Institute of Science and Technology

Chugoku-Shikoku Branch (10 Universities)

Tottori University, Shimane University, Okayama University, Hiroshima University, Yamaguchi University, The University of Tokushima, Naruto University of Education, Kagawa University, Ehime University, Kochi University

Kyushu Branch (11 Universities)

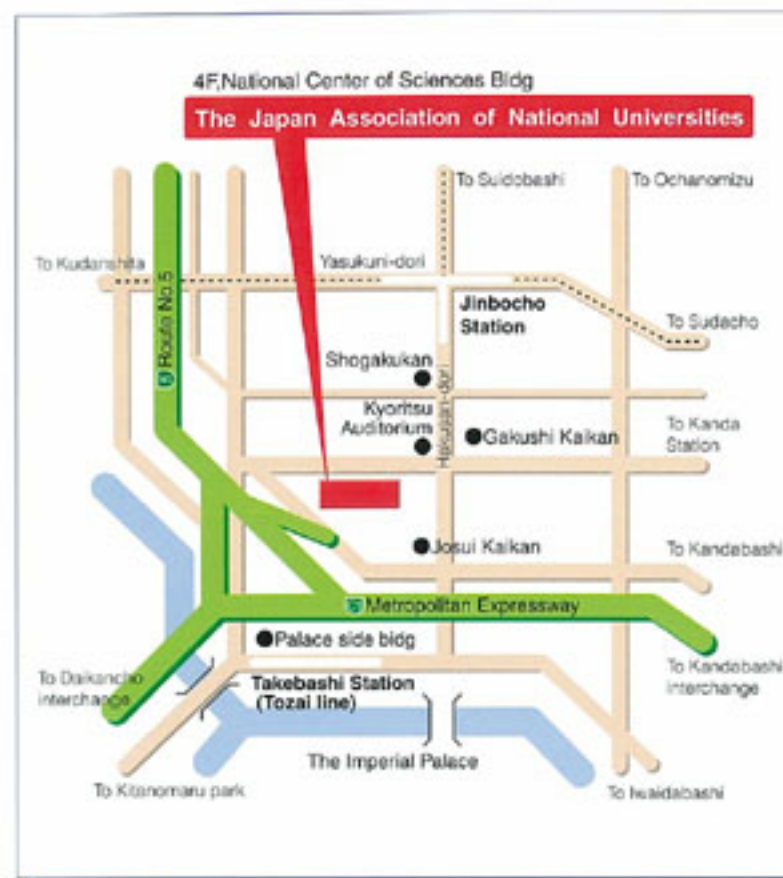
Fukuoka University of Education, Kyushu University, Kyushu Institute of Technology, Saga University, Nagasaki University, Kumamoto University, Oita University, Miyazaki University, Kagoshima University, National Institute of Fitness and Sports in Kanoya, University of the Ryukyus

Special Member (4 Organization)

National Institutes for the Humanities,
National Institutes of Natural Sciences,
High Energy Accelerator Research Organization,
Research Organization of Information and Systems



Route to the Japan Association of National Universities



Access Information

BY SUBWAY

207 Hanzomon Line, 110 Mita Line, 506 Shinjyuku Line :

Alight at Jinbocho Station. 3 minutes walk. (Sta. Exit A8)

106 Tozai Line : Alight at Takebashi Station. 4 minutes walk. (Sta. Exit 1B)

BY METROPOLITAN EXPRESSWAY

Daikancho, Kandabashi and Hitotsubashi interchange

The Japan Association of National Universities



4F, National Center of Sciences Bldg. 1-2, Hitotsubashi 2 Chome, Chiyodo-ku,
TOKYO, 101-0003 JAPAN
TEL 03-4212-3506 FAX 03-4212-3509
URL <http://www.janu.jp> E-Mail info@janu.jp



The Japan Association of
National Universities

2004



Greetings from the President



President **Takeshi Sasaki**
(President of the University of Tokyo)

On 1 April, 2004, the new Japan Association of National Universities, a confederation of the newly established National University Corporations, began operations.

Not only does the new Association inherit the roles, functions and achievements of the former Association of National Universities, at the same time it also takes on a new role that the former Association did not have. This new role, to put in simple terms, is a commitment to actively support the creation of an environment that is conducive to producing quality results in the spheres of education, research and social contribution activities conducted by autonomous national universities.

In order to adequately fulfill this mission, the new Association is established under the legal status of a corporation (*shadan-hojin*), and has revamped its organization and structure to make the system one that is befitting of a functional body. In addition, while maintaining the autonomy of each university, the new Association has set up branches all over Japan so as to organize and mediate regional and specialized activities and to work out systems of partnerships and cooperation with related organizations. The new Association has also accepted Inter-University Research Institutions into its fold as special members.

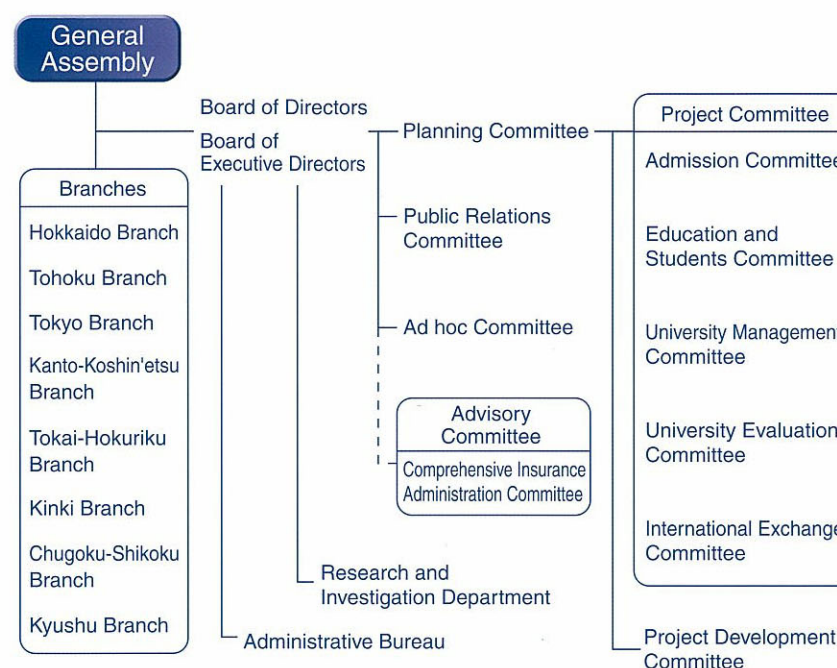
With regards to the software, rules for the election of committee members have been laid out while reforms have been made to allow officers and staff from more national universities to become members of the various committees in the Association. Former presidents are appointed as board directors to ensure efficiency and mobility in running the Association, and outstanding office staff from national universities are seconded to our bureaus to improve the quality of our bureaus.

With regards to our activities, we will be conducting research as well as making concrete proposals on the educational and academic policies of higher education in Japan. We will also vigorously work to increase awareness of the roles and achievements of Japanese national universities both within Japan and overseas, and investigate and formulate solutions for issues common to our national universities. Moreover, we will be actively promoting international exchanges as well as assist the administration of National University Corporations. A crucial job for us will be to gather and disseminate various kinds of information on personnel, labor and management affairs to our national universities as they venture into the unknown world of corporatization. We will also need to support risk management in each university through administering the National Universities Comprehensive Damage Insurance, and organize training sessions to improve the quality of university staff including those in senior managerial positions. We hope that the National University Corporations and Inter-University Research Institutions, members of the Association, would treat the Association as their very own, utilizing its services to the fullest and giving it their cooperation.

Through the above activities, we also hope that the Japanese government and other related organizations would kindly render institutional and financial assistance to our national universities. We would also sincerely like to ask public and private universities, related organizations as well as concerned parties in the general public for their kind understanding and support for our national universities and for the Association itself.

We are fully committed to consider carefully any views and requests that you may have about the various activities of our new national universities. To mark the start of the new Japan Association of National Universities, allow me once again to kindly ask for your warm guidance and assistance to make the Association a success.

Organization Chart



Governance

- Member of the Board(President) : Takeshi Sasaki [President, Tokyo University]
- Member of the Board(Vice President) : Hiromitsu Ishi [President, Hitotsubashi University]
- Member of the Board(Vice President) : Tisato Kajiyama [President, Kyushu University]
- Member of the Board(Senior Managing Director) :
Minoru Matsuo [Honorary Professor, Nagoya University]
- Member of the Board(Managing Director) : Teruo Morohashi [Director-General, JANU]
- Member of the Board : Mutsuo Nakamura [President, Hokkaido University]
- Member of the Board : Takashi Yoshimoto [President, Tohoku University]
- Member of the Board : Akira Miura [President, Akita University]
- Member of the Board : Setsuho Ikehata [President, Tokyo University of Foreign Studies]
- Member of the Board : Masuo Aizawa [President, Tokyo Institute of Technology]
- Member of the Board : Yo-ichi Iwasaki [President, University of Tsukuba]
- Member of the Board : Kaichi Isono [President, Chiba University]
- Member of the Board : Yujiro Hayashi [President, Kanazawa University]
- Member of the Board : Shin-ichi Hirano [President, Nagoya University]
- Member of the Board : Kazuo Oike [President, Kyoto University]
- Member of the Board : Hideo Miyahara [President, Osaka University]
- Member of the Board : Masanori Michiue [President, Tottori University]
- Member of the Board : Yusuke Sagara [President, Kochi University]
- Member of the Board : Tatsuro Sakimoto [President, Kumamoto University]
- Member of the Board : Yukihiro Nagata [President, Kagoshima University]
- Auditor : Yoshihiro Iida [President, Yokohama National University]
- Auditor : Seiji Dezuka [Toyo Audit Corporation]

Undertakings

Promoting quality education, academic research and social contribution in national universities

- ☐ **Public Relations**
 - Draw up medium and long-term public relations strategies and implementation plans for national universities.
 - Continuous and actively promote awareness of the roles and achievements of Japanese national universities both in Japan and overseas.
- ☐ **Admissions**
 - Conduct investigative research as well as formulate and provide guidelines on the current state of admissions into national universities.
 - Conduct investigative research and make proposals on the system of university admissions.
- ☐ **Undergraduate Education and Student Support**
 - Conduct investigative research and formulate proposals and solutions for the various issues concerning undergraduate education.
 - Improve the study environment of students, and provide assistance for career planning.
- ☐ **Appraisal of Universities**
 - Conduct investigative research on the appraisal of universities.
 - Verify, follow-up and hold symposiums and opinion sessions on actual appraisals.
- ☐ **Financial Matters for Higher Education**
 - Conduct investigative research on public spending for higher education.
 - Handle affairs related to securing budget for National University Corporations.

Investigative research for policy proposals regarding higher education and academic research

- Conduct short and long term investigative research and provide policy proposals for higher education.
- Hold seminars on higher education policies for university presidents.

International Exchange

- Conduct international exchange activities with foreign university organizations, in cooperation with public and private Japanese universities.
- Conduct investigative research on strategic international exchange, formulating, providing and implementing guidelines.

Management Assistance for National University Corporations

- Collect and provide information on personnel, labor and other management matters.
- Organize various training programs to improve the quality of officers and staff of national universities.
- Provide assistance in risk management by establishing and administering the National Universities Comprehensive Damage Insurance