

# Member Universities of the JANU

● **Regular Members** (86 national universities)

● **Special Members** (4 organizations)

National Institutes for the Humanities,  
National Institutes of Natural Sciences,  
High Energy Accelerator Research Organization,  
Research Organization of Information and Systems

*Nation of Knowledge*

**Tohoku Branch** (7 universities)

Hirosaki University, Iwate University,  
Tohoku University,  
Miyagi University of Education,  
Akita University, Yamagata University,  
Fukushima University

**Tokyo Branch** (12 universities)

The University of Tokyo, Tokyo Medical and Dental University,  
Tokyo University of Foreign Studies, Tokyo Gakugei University,  
Tokyo University of Agriculture and Technology,  
Tokyo University of the Arts, Tokyo Institute of Technology,  
Tokyo University of Marine Science and Technology,  
Ochanomizu University, The University of Electro-Communications,  
Hitotsubashi University, National Graduate Institute for Policy Studies

**Kanto-Koshin'etsu Branch**  
(14 universities)

Ibaraki University, University of Tsukuba,  
Tsukuba University of Technology, Utsunomiya University,  
Gunma University, Saitama University, Chiba University,  
Yokohama National University,  
The Graduate University for Advanced Studies,  
Niigata University, Nagaoka University of Technology,  
Joetsu University of Education,  
University of Yamanashi, Shinshu University

**Tokai-Hokuriku Branch**  
(12 universities)

University of Toyama, Kanazawa University,  
Japan Advanced Institute of  
Science and Technology,  
University of Fukui, Gifu University,  
Shizuoka University,  
Hamamatsu University School of Medicine,  
Nagoya University,  
Aichi University of Education,  
Nagoya Institute of Technology,  
Toyohashi University of Technology,  
Mie University

**Hokkaido Branch**  
(7 universities)

Hokkaido University,  
Hokkaido University of Education,  
Muran Institute of Technology,  
Otaru University of Commerce,  
Obihiro University of Agriculture &  
Veterinary Medicine,  
Asahikawa Medical University,  
Kitami Institute of Technology

**Kinki Branch**  
(13 universities)

Shiga University,  
Shiga University of Medical Science,  
Kyoto University,  
Kyoto University of Education,  
Kyoto Institute of Technology,  
Osaka University,  
Osaka Kyoiku University,  
Hyogo University of Teacher Education,  
Kobe University,  
Nara University of Education,  
Nara Women's University,  
Nara Institute of Science and Technology,  
Wakayama University

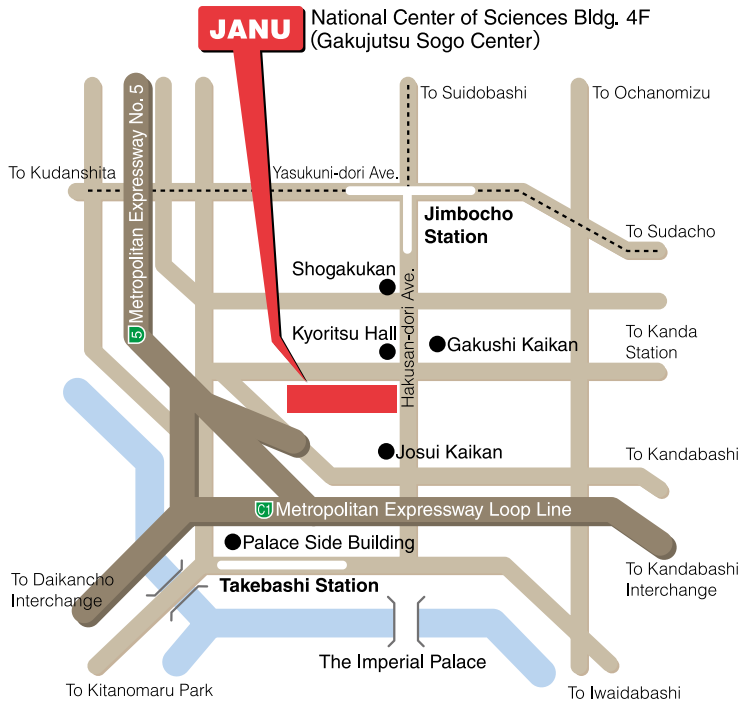
**Chugoku-Shikoku Branch**  
(10 universities)

Tottori University, Shimane University,  
Okayama University, Hiroshima University,  
Yamaguchi University, The University of Tokushima,  
Naruto University of Education, Kagawa University,  
Ehime University, Kochi University

**Kyushu Branch**  
(11 universities)

Fukuoka University of Education, Kyushu University,  
Kyushu Institute of Technology,  
Saga University, Nagasaki University,  
Kumamoto University, Oita University,  
University of Miyazaki, Kagoshima University,  
National Institute of Fitness and Sports in Kanoya,  
University of the Ryukyus

# Access



● **Directions**

By subway

3- minute walk from Jimbocho Station, Exit A8  
Take **Hanzomon Line** (Tokyo Metro) , **Mita Line** (Toei) ,  
or **Shinjuku Line** (Toei)  
4-minute walk from Takebashi Station, Exit 1B  
Take **Tozai Line** (Tokyo Metro)

By car

Take Daikancho, Kandabashi, or Hitotsubashi  
(Take Metropolitan Expressway Line 5 )  
Interchange to Metropolitan Expressway



The Japan Association of  
National Universities  
<http://www.janu.jp/>

National Center of Sciences Bldg. 4F  
2-1-2 Hitotsubashi, Chiyoda-ku, Tokyo 101-0003, Japan  
Tel:+81-3-4212-3506 Fax:+81-3-4212-3509 E-mail: info@janu.jp



The Japan Association  
of National Universities

2012



# Message from the President

JANU President, **Junichi Hamada**  
(President, The University of Tokyo)



A little over a year has passed since Japan suffered one of the worst disasters in its history. Once again, let me pay my deepest respects to those who perished in the Great East Japan Earthquake, and offer my sincerest sympathies to all those who were affected. It is everyone’s desire that rebuilding and recovery move ahead with all possible haste, but the wounds left by the disaster are so great that we are faced with a mountain of issues that need long-term approaches. These include disaster prevention and urban planning, rebuilding of communication and environmental infrastructures, support for decontamination, psychological care and educational support. At the same time, the world is also rapidly changing as globalization progresses and financial systems grow ever more complex. We find ourselves in a very demanding situation, but national universities must contribute to global development as bases of knowledge creation and education of highly skilled human resources.

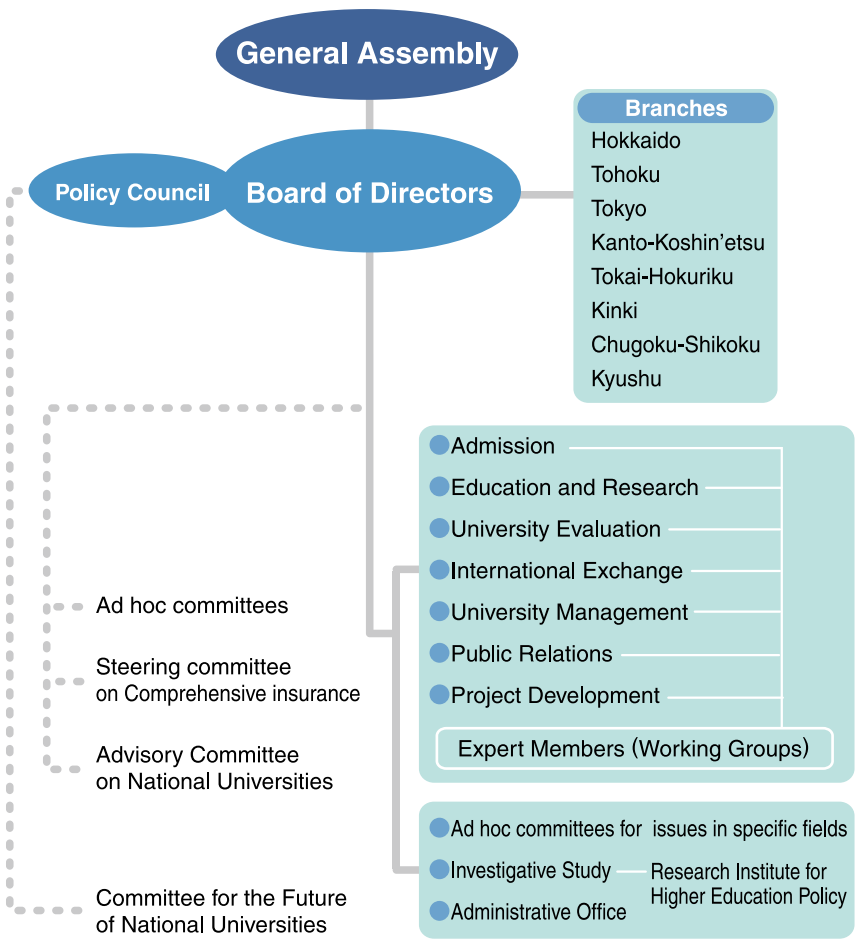
In June 2011, JANU released its “Enhancing the Functions of National Universities - Pledge to the People.” In it, we promised the people of Japan that each national university will clarify its individuality and specialties, while training those with talent who will lead the next generation as members of an international research and education network. This involves a thorough going enhancement of university functions to fit them as both national centers with a core role in promoting high-level research and innovation, and as regional centers indispensable to the local community in all aspects of regional growth.

In addition, national universities will work to build close mutual relationships with education and research institutes both in Japan and overseas, with the community, and with industry, focusing our combined strengths as a single organic collaborative system. As such, we will continue our contributions to rebuilding and restoring Japan and to creating new added value, devoting all our efforts to the sustainable development of Japanese society.

However, the ratio in Japan of public expenditure on higher education to GDP remains the lowest among the OECD nations, not even reaching half the average. This fact cannot help but have a serious effect on the stability of Japanese society. We are committed to achieving a fundamental strengthening of education and research functions in order to become a driving force in building a hopeful future for Japan, and a stable, sustainable global society as desired by people around the world. In forging links with public and private universities, we are increasingly speaking of university-related budgets as investments in the future, and hope to continue to strengthen our dialogue with the government, local authorities, and the business community.

National universities are seats of excellence in education and research from where talented people are sent out into to the world. And yet they are more than this. Being evenly distributed throughout the country and with relatively low fees, they ensure equal higher education opportunities, and guarantee a high level of Japanese education and research at both the national and local levels. We urge your continued support for Japan’s national universities and your valued cooperation with the Japan Association of National Universities.

# Organization Chart



## Governance

Board Members			(As of April, 23, 2012)
Members of the Board (President)	:Junichi Hamada	【President, The University of Tokyo】	
Members of the Board (Vice President)	:Hiroshi Matsumoto	【President, Kyoto University】	
	:Susumu Kagawa	【President, The University of Tokushima】	
	:Michinari Hamaguchi	【President, Nagoya University】	
Members of the Board (Senior Managing Director)	:Masahiko Ichii	【Honorary Professor, Kagawa University】	
Members of the Board (Managing Director)	:Kenji Hayata	【Director-General, JANU】	
Member of the Board	:Hiroshi Saeki	【President, Hokkaido University】	
	:Kenji Homma	【President, Hokkaido University of Education】	
	:Susumu Satomi	【President, Tohoku University】	
	:Kazuyuki Mikami	【President, Miyagi University of Education】	
	:Nobuhiro Yamada	【President, University of Tsukuba】	
	:Yasushi Saito	【President, Chiba University】	
	:Ryohei Miyata	【President, Tokyo University of the Arts】	
	:Fumitake Gejyo	【President, Niigata University】	
	:Masaru Fukuda	【President, University of Fukui】	
	:Toshio Hirano	【President, Osaka University】	
	:Hideki Fukuda	【President, Kobe University】	
	:Kiyoshi Morita	【President, Okayama University】	
	:Setsuo Arikawa	【President, Kyushu University】	
	:Isao Taniguchi	【President, Kumamoto University】	
Auditor	:Sawako Hanyu	【President, Ochanomizu University】	
	:Hiroki Yoshida	【President, Kagoshima University】	
Assistant to President			
	Yoshihiko Kamii	【President, Saitama University】	
	Susumu Yamauchi	【President, Hitotsubashi University】	
	Minoru Takahashi	【President, Nagoya Institute of Technology】	
	Toshimasa Asahara	【President, Hiroshima University】	

# Activities

- **Activities to promote high quality education, academic research, and social contribution for national universities**
  - Conducting investigative research and formulating guidelines on the current state of admissions to national universities
  - Gathering information and materials, conducting investigative research, and examining issues pertaining to high-quality education and research
  - Conducting investigative research and verification relating to evaluation of the results and certification of national universities
  - Conducting and examining investigative research on policies for the promotion of government exchange programs and international student exchange programs of individual universities
  - Promoting exchange projects with the various overseas presidents' associations through member participation
- **Studies for policy proposal regarding higher education and academic research in Japan and the independent drafting of such policies**
  - Conducting investigative research and making policy proposals on issues relating to higher education and academic research
  - Conducting seminars on issues relating to higher education, academic research, and national universities
  - Examining the roles that national universities are required to play and seeking to enhance their unique functions
  - Analyzing the current status and issues of national universities, conducting investigative research concerning their future, and gathering basic information and materials
- **Promoting exchange projects based on international partnerships**
  - Pursuing international exchange with various overseas universities through partnerships and cooperation with public and private Japanese universities
  - Supporting other activities of international institutions in Japan related to international student exchange
- **Providing management support for national university corporations**
  - Understanding issues pertaining to the university management environment including personal, labor, finance, facilities and hospital affiliated with university, and making policy proposals to organizations relating to higher education.
  - Providing management support for national universities by providing information and materials
  - Organizing, implementing, and supporting training programs to improve the performance of executive officers and staff of national universities and related organizations
  - Carrying out PR activities related to national universities and JANU
  - Providing support for the activities of each JANU branch in Japan
  - Conducting investigative research in specific fields requiring an immediate response
  - Actions for reconstructing new Japan after the Great East Japan Earthquake
- **Other activities geared to achieving JANU's goals**
  - Providing assistance and consulting services in risk management, administration, and improvement of comprehensive insurance for national university corporations