

# Member Universities of the JANU

## ●Regular Members (86 national universities)

## ●Special Members (4 organizations)

National Institutes for the Humanities,  
National Institutes of Natural Sciences,  
High Energy Accelerator Research Organization,  
Research Organization of Information and Systems

## Nation of Knowledge

### Tokyo Branch

#### (12 universities)

The University of Tokyo,  
Tokyo Medical and Dental University,  
Tokyo University of Foreign Studies,  
Tokyo Gakugei University,  
Tokyo University of Agriculture and Technology,  
Tokyo University of the Arts,  
Tokyo Institute of Technology,  
Tokyo University of Marine Science and Technology,  
Ochanomizu University,  
The University of Electro-Communications,  
Hitotsubashi University,  
National Graduate Institute for Policy Studies

### Kanto-Koshin'etsu Branch

#### (14 universities)

Ibaraki University, University of Tsukuba,  
Tsukuba University of Technology, Utsunomiya University,  
Gunma University, Saitama University, Chiba University,  
Yokohama National University,  
The Graduate University for Advanced Studies,  
Niigata University, Nagaoka University of Technology,  
Joetsu University of Education,  
University of Yamanashi, Shinshu University

### Tokai-Hokuriku Branch

#### (12 universities)

University of Toyama, Kanazawa University,  
Japan Advanced Institute of Science and Technology,  
University of Fukui, Gifu University,  
Shizuoka University,  
Hamamatsu University School of Medicine,  
Nagoya University,  
Aichi University of Education,  
Nagoya Institute of Technology,  
Toyoashi University of Technology,  
Mie University

### Chugoku-Shikoku Branch

#### (10 universities)

Tottori University, Shimane University,  
Okayama University, Hiroshima University, Yamaguchi University,  
The University of Tokushima, Naruto University of Education,  
Kagawa University, Ehime University,  
Kochi University

### Kyushu Branch

#### (11 universities)

Fukuoka University of Education, Kyushu University,  
Kyushu Institute of Technology,  
Saga University, Nagasaki University,  
Kumamoto University, Oita University,  
University of Miyazaki, Kagoshima University,  
National Institute of Fitness and Sports in Kanoya,  
University of the Ryukyus

### Hokkaido Branch

#### (7 universities)

Hokkaido University,  
Hokkaido University of Education,  
Muroran Institute of Technology,  
Otaru University of Commerce,  
Obihiro University of Agriculture & Veterinary Medicine,  
Asahikawa Medical University,  
Kitami Institute of Technology

### Tohoku Branch

#### (7 universities)

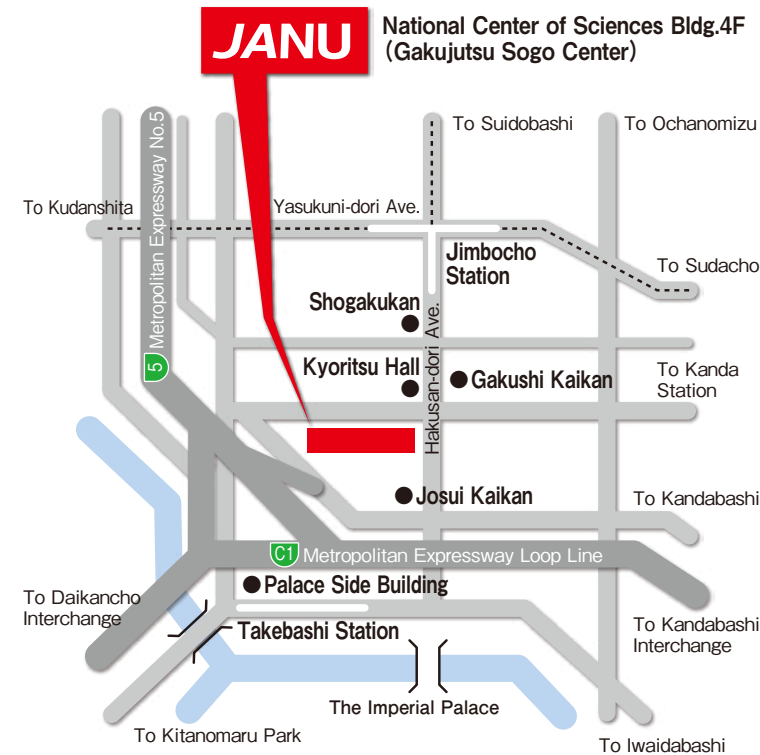
Hiroaki University,  
Iwate University,  
Tohoku University,  
Miyagi University of Education,  
Akita University,  
Yamagata University,  
Fukushima University

### Kinki Branch

#### (13 universities)

Shiga University,  
Shiga University of Medical Science,  
Kyoto University,  
Kyoto University of Education,  
Kyoto Institute of Technology,  
Osaka University,  
Osaka Kyoiku University,  
Hyogo University of Teacher Education,  
Kobe University,  
Nara University of Education,  
Nara Women's University,  
Nara Institute of Science and Technology,  
Wakayama University

## Access



## Directions

### By subway

3-minutes walk from Jimbocho Station, Exit A8  
Take Hanzomon Line (Tokyo Metro), Mita Line (Toei),  
or Shinjuku Line (Toei)  
4-minutes walk from Takebashi Station, Exit 1B  
Take Tozai Line (Tokyo Metro)

### By car

Take Daikancho, Kandabashi, or Hitotsubashi  
(Take Metropolitan Expressway Line 5)  
Interchange to Metropolitan Expressway



The Japan Association of  
National Universities

<http://www.janu.jp/>

National Center of Sciences Bldg. 4F  
2-1-2 Hitotsubashi, Chiyoda-ku, Tokyo 101-0003, Japan  
Tel: +81-3-4212-3506 Fax: +81-3-4212-3509 E-mail: info@janu.jp



The Japan Association  
of National Universities

2013





# Message from the President

The Japan Association of National Universities (JANU)  
With Action, Leadership, and Cooperation

In this current era of upheaval, national universities are increasingly expected to take responsibility for education and research in Japan, and to serve as a base for human and intellectual resources. At the same time, there is a growing demand from various sectors to improve national universities and reform their governance so that they may better fulfill their roles.

In accordance with the Third Proposal issued recently by the Education Rebuilding Implementation Council, the government is producing policies for proactive reforms such as the qualitative transformation of university education, promotion of global education, reinforcement of the education and research platform to promote innovation, and increased continuing education opportunities for working people.

It is to address such challenges that every national university has been working diligently. In May 2013, JANU compiled its “Fundamental Views Concerning the National University Reforms—Independent and Autonomous Efforts toward the Functional Enhancement of National Universities.” In the process of producing that report, we were able to reevaluate the purpose and significance of national universities, review their functions and roles, and identify areas which should be strengthened.

From now on, we will endeavor, through the three principles of JANU’s motto: “Action, Leadership, and Cooperation,” to further enhance the value provided by national universities while firmly addressing the requirements of government and society.

JANU that acts: In addition to strongly conveying to society the significance of national universities, we are actively working to engage the government and the relevant agencies and ministries for financial support, environmental improvement, and other support.

JANU that leads: We will consolidate the accumulated “knowledge” of national universities. We will continue to lead national and non-national universities in Japan, to enhance their globalization and their competitiveness on the world stage.

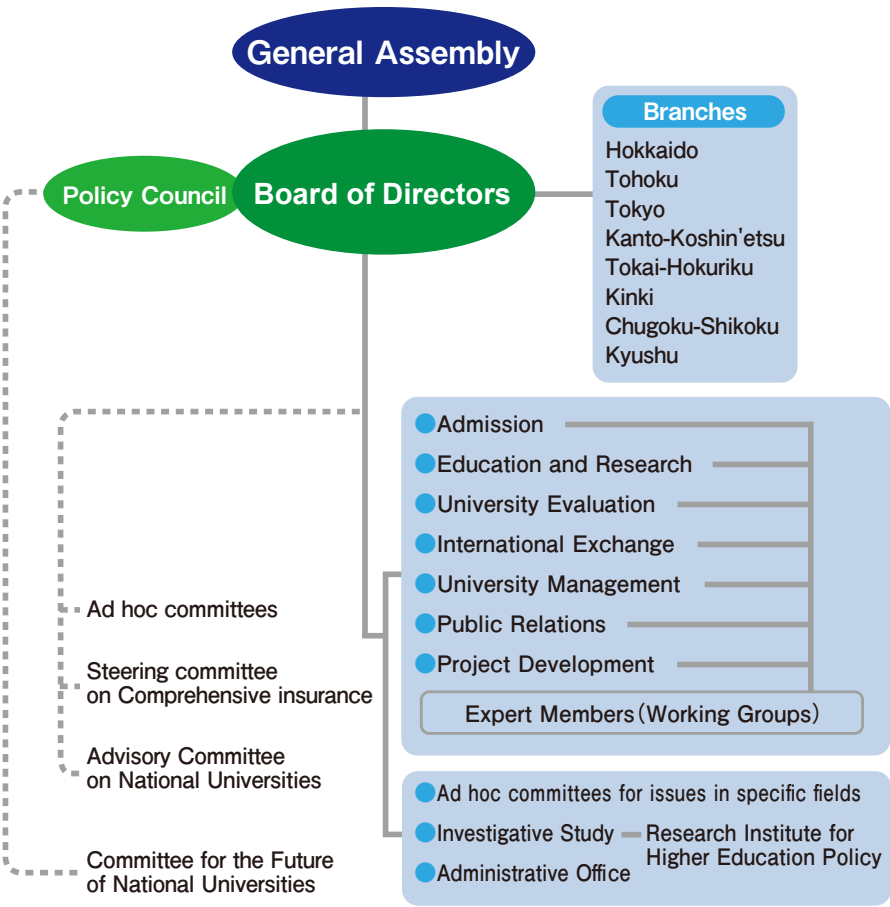
JANU that cooperates: Combining strategies and ideas from each national university, we will seek to consolidate our strength and develop a unified national university system.

As Prime Minister Abe stated, the power of national universities is a nation’s power itself. For the sustainable development of our country, national universities must further enhance their capabilities. In cooperation with all national universities, JANU will continue its diligent efforts.



JANU President  
**Hiroshi Matsumoto**  
(President, Kyoto University)

# Organization Chart



# Governance

(As of July 1, 2013)

## Board Members

Members of the Board (President)	: Hiroshi Matsumoto [President, Kyoto University]
Members of the Board (Vice President)	: Michinari Hamaguchi [President, Nagoya University] : Susumu Satomi [President, Tohoku University] : Sawako Hanyu [President, Ochanomizu University] : Isao Taniguchi [President, Kumamoto University]
Members of the Board (Special Adviser)	: Junichi Hamada [President, The University of Tokyo]
Members of the Board (Senior Managing Director)	: Masahiko Ichii [Honorary Professor, Kagawa University]
Members of the Board (Managing Director)	: Masato Kitani [Director-General, JANU]
Members of the Board	: Keizo Yamaguchi [President, Hokkaido University] : Kazuhiko Sato [President, Muroran Institute of Technology] : Osamu Nittono [President, Fukushima University] : Susumu Yamauchi [President, Hitotsubashi University] : Kyosuke Nagata [President, University of Tsukuba] : Yasushi Saito [President, Chiba University] : Fumitake Gejyo [President, Niigata University] : Shunro Endo [President, University of Toyama] : Minoru Takahashi [President, Nagoya Institute of Technology] : Toshio Hirano [President, Osaka University] : Hideki Fukuda [President, Kobe University] : Ryota Teshima [President, Tottori University] : Toshimasa Asahara [President, Hiroshima University] : Hiroshi Wakiguchi [President, Kochi University] : Setsuo Arikawa [President, Kyushu University] : Shigeru Katamine [President, Nagasaki University]
Auditor	: Kuniaki Takata [President, Gunma University] : Tsuneto Nagatomo [President, Nara University of Education]

## Assistant to President

Ryohei Miyata [President, Tokyo University of the Arts]  
Kunio Suzuki [President, Yokohama National University]  
Takuya Katayama [President, Japan Advanced Institute of Science and Technology]  
Kiyoshi Morita [President, Okayama University]

# Activities

## Activities necessary for national universities to promote high-quality education, academic research, and social contribution

- Studying and discussing national universities’ entrance examinations. Discussing and devising implementation guidelines etc. for national universities’ entrance examinations.
- Collecting information that will help national universities conduct high-quality education, research, and other activities. Studying and discussing challenges associated with conducting high-quality education and research.
- Responding to the achievement evaluation and the certified evaluation and accreditation of national university corporations. Conducting studies, research, and verification concerning these evaluations.
- Studying and discussing the national government’s policies on foreign students aimed at internationalizing Japanese universities as well as measures for helping each national university develop and enhance its own voluntary international exchange programs.
- Discussing exchange programs between the faculty/staff of JANU member universities and international organizations such as the associations of university presidents of various countries.

## Studies and research necessary for universities’ voluntary policy-making activities as well as for proposals concerning the national government’s policies on higher education, academic research, etc.

- Conducting studies and research and making proposals concerning challenges associated with the government’s policies on higher education, academic research, etc.
- Holding seminars and other events concerning challenges facing higher education, academic research, and national universities.
- Discussing the roles and characteristics of national universities and the enhancement of national universities’ functions.
- Conducting analysis of the current statuses of various challenges facing national universities. Conducting studies and research and collecting basic materials concerning national universities’ future prospects.

## International exchange programs based on international partnership

- Collaborating and cooperating with organizations relating to public and private universities to implement international exchange programs with university-related organizations of other countries.
- Helping various international student exchange organizations conduct activities in Japan.

## Support for the management and administration of national university corporations

- Identifying challenges relating to human resources, personnel management, finances, facility development, hospital administration, etc. and making proposals or requests to relevant agencies.
- Supporting national university corporations’ management and administration by providing relevant reference materials and information.
- Planning, holding, or supporting seminars, training sessions, and other events targeted at directors, faculty, and staff of national universities and other related organizations.
- Conducting public relations concerning national universities and JANU.
- Supporting voluntary activities conducted by each branch of JANU.
- Studying and discussing impending issues in specific areas.
- Supporting efforts to reconstruct regions affected by the 2011 Great East Japan Earthquake as well as efforts to reinvigorate Japan as a whole.

## Other activities necessary for achieving the objectives of JANU

- Supporting risk management activities of national university corporations. Operating and improving a comprehensive property and casualty insurance system.