

Members of the JANU

●Regular Members (86 national universities)

●Special Members (4 organizations)

National Institutes for the Humanities,
National Institutes of Natural Sciences,
High Energy Accelerator Research Organization,
Research Organization of Information and Systems

Nation of Knowledge

Tokyo Branch

(12 universities)

The University of Tokyo,
Tokyo Medical and Dental University,
Tokyo University of Foreign Studies,
Tokyo Gakugei University,
Tokyo University of Agriculture and Technology,
Tokyo University of the Arts,
Tokyo Institute of Technology,
Tokyo University of Marine Science and Technology,
Ochanomizu University,
The University of Electro-Communications,
Hitotsubashi University,
National Graduate Institute for Policy Studies

Kanto-Koshin'etsu Branch

(14 universities)

Ibaraki University, University of Tsukuba,
Tsukuba University of Technology, Utsunomiya University,
Gunma University, Saitama University, Chiba University,
Yokohama National University,
The Graduate University for Advanced Studies,
Niigata University, Nagaoka University of Technology,
Joetsu University of Education,
University of Yamanashi, Shinshu University

Tokai-Hokuriku Branch

(12 universities)

University of Toyama, Kanazawa University,
Japan Advanced Institute of Science and Technology,
University of Fukui, Gifu University,
Shizuoka University,
Hamamatsu University School of Medicine,
Nagoya University,
Aichi University of Education,
Nagoya Institute of Technology,
Toyohashi University of Technology,
Mie University

Chugoku-Shikoku Branch

(10 universities)

Tottori University, Shimane University,
Okayama University, Hiroshima University, Yamaguchi University,
The University of Tokushima, Naruto University of Education,
Kagawa University, Ehime University,
Kochi University

Kyushu Branch

(11 universities)

Fukuoka University of Education, Kyushu University,
Kyushu Institute of Technology,
Saga University, Nagasaki University,
Kumamoto University, Oita University,
University of Miyazaki, Kagoshima University,
National Institute of Fitness and Sports in Kanoya,
University of the Ryukyus

Hokkaido Branch

(7 universities)

Hokkaido University,
Hokkaido University of Education,
Muroran Institute of Technology,
Otaru University of Commerce,
Obihiro University of Agriculture & Veterinary Medicine,
Asahikawa Medical University,
Kitami Institute of Technology

Tohoku Branch

(7 universities)

Hirosaki University,
Iwate University,
Tohoku University,
Miyagi University of Education,
Akita University,
Yamagata University,
Fukushima University

Kinki Branch

(13 universities)

Shiga University,
Shiga University of Medical Science,
Kyoto University,
Kyoto University of Education,
Kyoto Institute of Technology,
Osaka University,
Osaka Kyoiku University,
Hyogo University of Teacher Education,
Kobe University,
Nara University of Education,
Nara Women's University,
Nara Institute of Science and Technology,
Wakayama University

Access



Directions

By subway

3-minutes walk from Jimbocho Station, Exit A9
Take Hanzomon Line (Tokyo Metro), Mita Line (Toei),
or Shinjuku Line (Toei)
4-minutes walk from Takebashi Station, Exit 1B
Take Tozai Line (Tokyo Metro)

By car

Take Metropolitan Expressway and get off at Daikancho
Exit, Kandabashi Exit or Hitotsubashi Exit.



The Japan Association of
National Universities

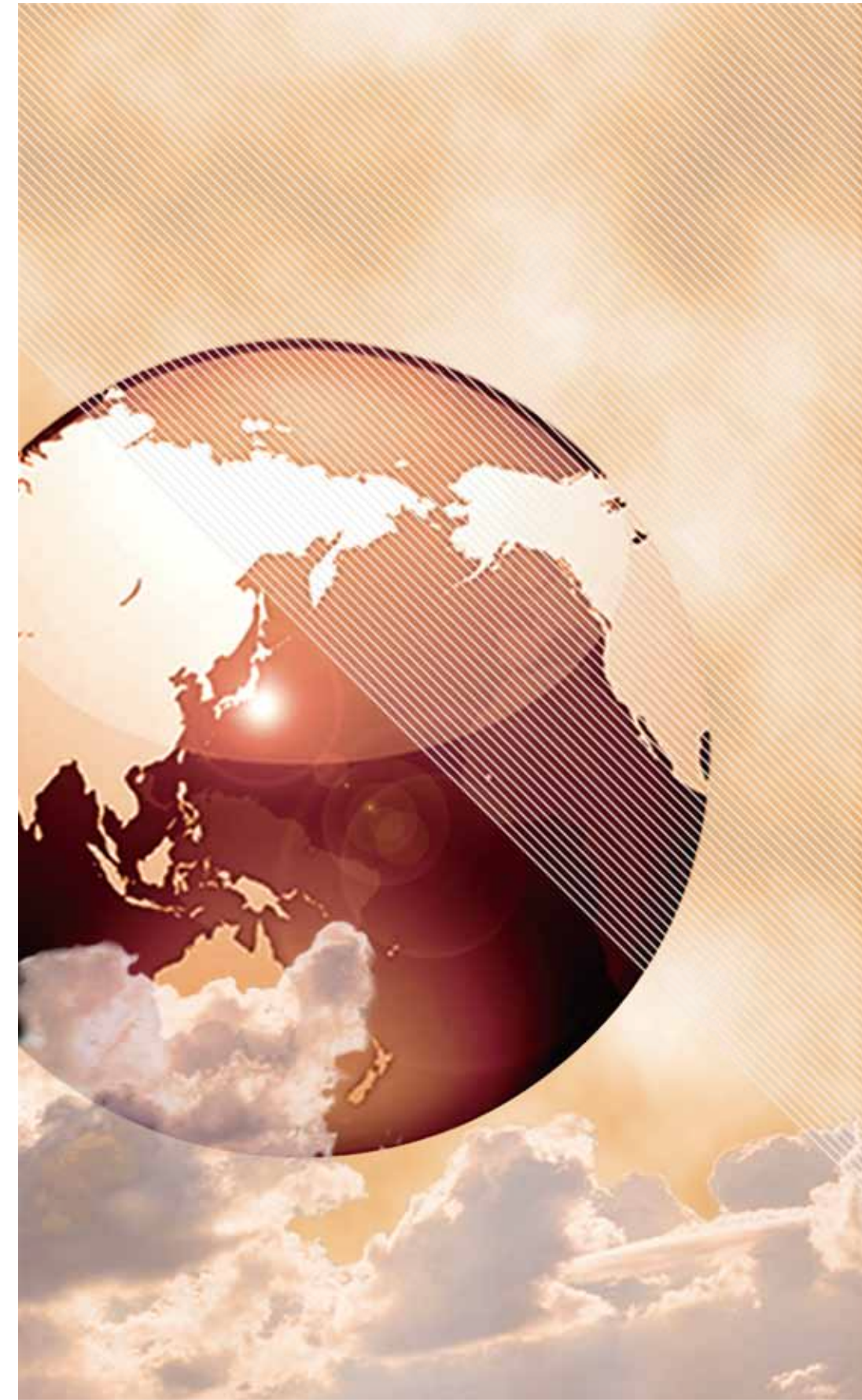
<http://www.janu.jp/>

National Center of Sciences Bldg. 4F
2-1-2 Hitotsubashi, Chiyoda-ku, Tokyo 101-0003, Japan
Tel: +81-3-4212-3506 Fax: +81-3-4212-3509 E-mail: info@janu.jp



The Japan Association
of National Universities

2014



Message from the President

Toward the Further Functional Enhancement of National Universities

In recent years, there has been a growing public expectation for Japanese national universities to play a greater role in strengthening the nation's competitive-ness. Under the circumstances, national universities are increasingly challenged to enhance their value. The “Japan Revitalization Strategy” publicized by the national government in June 2013 also refers to national university reforms as a key factor to produce excellent human resources and promote science and technology innovations, thereby contrib-uting to the nation's growth.



Each Japanese national university has always tried to make great efforts to reform itself. In May 2013, the Japan Association of National Universities (JANU) compiled its “Fundamental Views Concerning the National University Reforms—Independent and Autonomous Efforts toward the Functional Enhancement of National Universities” based upon the view that national universities should maintain their independence and improve their functions autonomously and strategically in accordance with social needs. This report reveals our fundamental views about the functions and roles of national universities that should be enhanced in the future.

In November 2013, in reaction to the “Plan to Reform National Universities” published by the Ministry of Education, Culture, Sports, Science and Technology (MEXT), JANU released a presidential statement, reiterating the national universities' resolution to continue to reform themselves steadily by improving their functions based on their strengths, characteristics and missions.

Japan's fiscal 2014 budget for national university corporations includes many schemes that encourage national universities to improve their functions. This reflects a high public expectation for national university reforms.

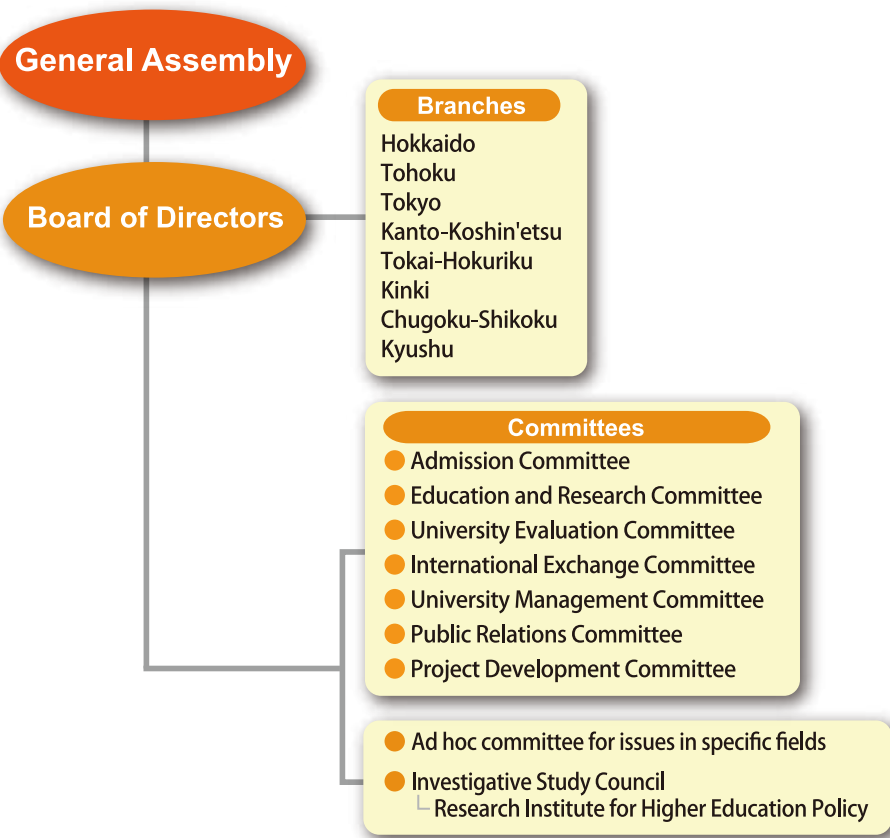
With such support to improve the functions of national universities, each national university will go forward to improve its functions through various measures, such as creation of cutting-edge innovations, further globalization in education and research, and reforms in its governance as well as in personnel and payroll systems under the leadership of its president.

JANU will take prompt action, show leadership and promote cooperation among its members to support each national university to make the full use of their potential and to provide the world's leading education and research,

I would like to ask for continued support and encouragement to national universities and JANU.

JANU President
Hiroshi Matsumoto
(President, Kyoto University)

Organization Chart



Governance

(As of April 1, 2014)

Board Members

•Members of the Board

Hiroshi Matsumoto – President / President, Kyoto University
Michinari Hamaguchi – Vice President / President, Nagoya University
Susumu Satomi – Vice President / President, Tohoku University
Sawako Hanyu – Vice President / President, Ochanomizu University
Isao Taniguchi – Vice President / President, Kumamoto University
Junichi Hamada – Special Adviser / President, The University of Tokyo
Masahiko Ichii – Senior Managing Director / Honorary Professor, Kagawa University
Masato Kitani – Managing Director / Director-General, JANU

Keizo Yamaguchi / President, Hokkaido University
Kazuhiko Sato / President, Muroran Institute of Technology
Katsumi Nakai / President, Fukushima University
Susumu Yamauchi / President, Hitotsubashi University
Kyosuke Nagata / President, University of Tsukuba
Takeshi Tokuhisa / President, Chiba University
Sugata Takahashi / President, Niigata University
Shunro Endo / President, University of Toyama
Takashi Onishi / President, Toyohashi University of Technology
Toshio Hirano / President, Osaka University
Hideki Fukuda / President, Kobe University
Ryota Teshima / President, Tottori University
Toshimasa Asahara / President, Hiroshima University
Hiroshi Wakiguchi / President, Kochi University
Setsuo Arikawa / President, Kyushu University
Shigeru Katamine / President, Nagasaki University

•Auditors

Kuniaki Takata / President, Gunma University
Tsuneto Nagatomo / President, Nara University of Education

Assistant to President

Ryohei Miyata / President, Tokyo University of the Arts
Kunio Suzuki / President, Yokohama National University
Naoki Ogasawara / President, Nara Institute of Science and Technology
Kiyoshi Morita / President, Okayama University

Objectives and Activities of JANU

● Objectives of JANU (Article 4 of the Articles of Incorporation)

JANU shall contribute to the promotion of national university corporations and the improvement of standards of higher education and academic research in our nation with well-balanced development, creating the circumstances to ensure outstanding achievements conducted by national university corporations on various activities related to education, research and contribution to the society.

● Activities of JANU (Article 5 of the Articles of Incorporation)

- (1) Activities necessary for national universities to promote high-quality education, academic research, and social contribution
- (2) Studies and research necessary for universities' voluntary policy-making activities as well as for proposals concerning the national government's policies on higher education, academic research, etc.
- (3) International exchange programs based on international partnership
- (4) Support for the management and administration of national university corporations
- (5) Other activities necessary for achieving the objectives of JANU

Major Activities in Fiscal 2013

● General assembly meetings and board of directors meetings

- Regular general assembly meetings (June, November and March)
- Board of Directors meetings (April, May, July, October and February)

● Appeals, statements, etc.

- “Fundamental Views Concerning the National University Reforms” published (May)
- “Appeal regarding the national budget for national university corporations” submitted to MEXT, etc. (July)
- “Appeal regarding the Revised Labor Contract Act” submitted to MEXT, etc. (September)
- General assembly resolution “National universities' decision to contribute to ‘Japan Revitalization ’” publicized (November)
- Presidential statement “Statement in reaction to MEXT's ‘Plan to Reform National Universities' ” released (November)
- Emergency statement “Appeal regarding the national budget for Grants-in-Aid for Scientific Research” released (November)

● Seminars, training sessions and other events

- Training Session for Board Members of National Universities (June)
- Training Session for Section/Department Managers of National Universities (July)
- Top Seminar: Seminar for Presidents of National Universities (August)
- University Management Seminar (September, October and November)
- University Reform Symposium (November)
- Study Session for Young Staff of National Universities (December)

● Publications

Public relations magazine *National Universities* (former *JANU*) published (June, October, December and March)



The second regular general assembly meeting held in Wakayama City



Meeting with Mr. Hakubun Shimomura, MEXT Minister