

# Members of the JANU

- Regular Members (86 national universities)
- Special Members (4 organizations)

National Institutes for the Humanities,  
National Institutes of Natural Sciences,  
High Energy Accelerator Research Organization,  
Research Organization of Information and Systems

## Nation of Knowledge

### Tokyo Branch

- (12 universities)
- The University of Tokyo,  
Tokyo Medical and Dental University,  
Tokyo University of Foreign Studies,  
Tokyo Gakugei University,  
Tokyo University of Agriculture and Technology,  
Tokyo University of the Arts,  
Tokyo Institute of Technology,  
Tokyo University of Marine Science and Technology,  
Ochanomizu University,  
The University of Electro-Communications,  
Hitotsubashi University,  
National Graduate Institute for Policy Studies

### Kanto-Koshin'etsu Branch

- (14 universities)
- Ibaraki University, University of Tsukuba,  
Tsukuba University of Technology, Utsunomiya University,  
Gunma University, Saitama University, Chiba University,  
Yokohama National University,  
The Graduate University for Advanced Studies, SOKENDAI,  
Niigata University, Nagaoka University of Technology,  
Joetsu University of Education,  
University of Yamanashi, Shinshu University

### Tokai-Hokuriku Branch

- (12 universities)
- University of Toyama, Kanazawa University,  
Japan Advanced Institute of Science and Technology,  
University of Fukui,  
Shizuoka University,  
Hamamatsu University School of Medicine,  
Tokai National Higher Education and Research System, Gifu University,  
Tokai National Higher Education and Research System, Nagoya University,  
Aichi University of Education,  
Nagoya Institute of Technology,  
Toyoashi University of Technology,  
Mie University

### Chugoku-Shikoku Branch

- (10 universities)
- Tottori University, Shimane University,  
Okayama University, Hiroshima University, Yamaguchi University,  
Tokushima University, Naruto University of Education,  
Kagawa University, Ehime University,  
Kochi University

### Kyushu Branch

- (11 universities)
- University of Teacher Education Fukuoka, Kyushu University,  
Kyushu Institute of Technology,  
Saga University, Nagasaki University,  
Kumamoto University, Oita University,  
University of Miyazaki, Kagoshima University,  
National Institute of Fitness and Sports in Kanoya,  
University of the Ryukyus

### Hokkaido Branch

- (7 universities)
- Hokkaido University,  
Hokkaido University of Education,  
Muroran Institute of Technology,  
Otaru University of Commerce,  
Obihiro University of Agriculture and Veterinary Medicine,  
Asahikawa Medical University,  
Kitami Institute of Technology

### Tohoku Branch

- (7 universities)
- Hirosaki University,  
Iwate University,  
Tohoku University,  
Miyagi University of Education,  
Akita University,  
Yamagata University,  
Fukushima University

### Kinki Branch

- (13 universities)
- Shiga University,  
Shiga University of Medical Science,  
Kyoto University,  
Kyoto University of Education,  
Kyoto Institute of Technology,  
Osaka University,  
Osaka Kyoiku University,  
Hyogo University of Teacher Education,  
Kobe University,  
Nara University of Education,  
Nara Women's University,  
Nara Institute of Science and Technology,  
Wakayama University

## Access



## Directions

### By subway

- 3-minutes walk from Jimbocho Station, Exit A8  
Take Hanzomon Line (Tokyo Metro), Mita Line (Toei),  
or Shinjuku Line (Toei)  
4-minutes walk from Takebashi Station, Exit 1B  
Take Tozai Line (Tokyo Metro)

### By car

- Take Metropolitan Expressway and get off at Daikancho Exit, Kandabashi Exit or Hitotsubashi Exit.



The Japan Association of  
National Universities

<https://www.janu.jp/>

National Center of Sciences Bldg. 4F  
2-1-2 Hitotsubashi, Chiyoda-ku, Tokyo 101-0003, Japan  
Tel:+81-3-4212-3506 Fax:+81-3-4212-3509 E-mail:info@janu.jp

The Japan Association of  
National Universities

2020



The Japan Association of  
National Universities

# Message from the President

In our increasingly globalizing world, there are many global-level issues related to the environment, energy, food, etc. In Japan, we are facing, ahead of the rest of the world, a falling birthrate, an aging population, and a shrinking labor force. It is difficult to resolve these issues based only on past experience.

There are 86 national universities in Japan, each with their own unique characteristics. At these universities, approximately 60,000 faculty members are involved in educating over 600,000 undergraduate and graduate students, while individually pursuing their own unique research. This diversity is the source of our ability to flexibly handle the increasingly complex and ever-changing future that cannot be extrapolated from the past.

Located in every prefecture and metropolitan area, Japanese national universities have played a central role in regional revitalization through developing innovation and nurturing top-class graduates. The national universities are the core entities for supporting their respective region's culture, society and economy, and are keenly aware of their responsibilities towards their region's industry, medical care, welfare, and education. Against the backdrop of the above-mentioned paradigm shift, regional development has become one of Japan's most dire challenges. We, the Japan Association of National Universities, believe that it is our duty to respond to the heightened expectations placed on us.

The capability of human resources can be represented by the product of the number of members and their ability. Because the population in Japan is decreasing, it is necessary to improve the ability of individuals in order to improve the capability of human resources. Specifically, this can be realized by enhancing the quality of education at universities and uncovering and developing talent that has not yet been discovered. To this end, it is indispensable to review the entrance examination system and content of education. This is a task which each university must work on in its distinctive manner.

The strength of national universities in human resources development is education based on excellent research. Talented doctoral human resources with deep expertise, practical skills and a broad view are globally desired. This is because they will bring about innovation in various fields to lead society. In view of this present situation, it is an issue to be solved that the proportion of master's degree recipients and doctoral degree recipients in Japan is lower than in other countries (the former is approximately one third, while the latter is approximately one half). Each national university is required to improve its graduate education programs by taking advantage of its respective characteristics. In addition, effort in various areas of society is needed – for example, master's and doctoral degrees recipients should receive fair evaluation in companies, and the economic support should be enhanced so that graduate students can concentrate on their coursework.

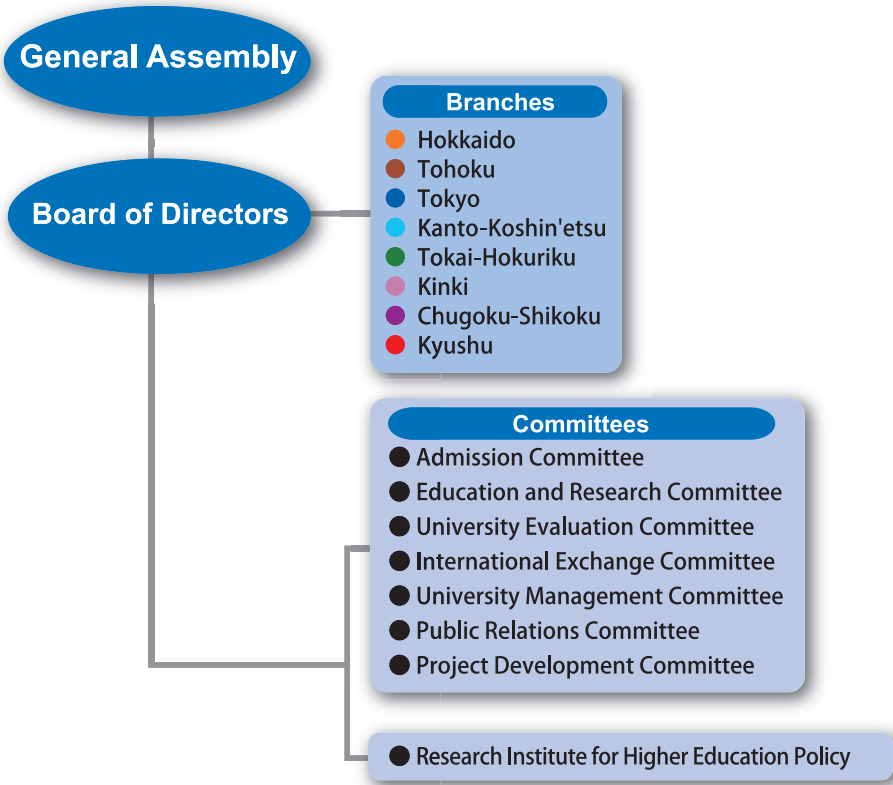
For national universities to play this important role, each national university must make full use of their unique advantages, while, at same time, work together as a whole to bring forth and ensure a bright future for our society. It is important that all 86 national universities unite in their support of each region and the nation, as well as work a long side with our fellow international partner institutions on a global scale. It is the mission of the Japan Association of National Universities to support these goals.

In 2020, the Japan Association of National Universities celebrates the 70th anniversary of its founding. We look forward to and are grateful for all your continued support for national universities and the Japan Association of National Universities.



JANU President  
NAGATA Kyosuke  
(University of Tsukuba)

# Organization Chart



## Governance

(As of April 1, 2020)

### Board Members

- Members of the Board  
NAGATA Kyosuke / President / President, University of Tsukuba  
NISHIO Shojiro / Vice President / President, Osaka University  
OHNO Hideo / Vice President / President, Tohoku University  
YAMAZAKI Koetsu / Vice President / President, Kanazawa University  
HAYASHI Kayoko / Vice President / President, Tokyo University of Foreign Studies  
YAMAGUCHI Hiroki / Senior Managing Director / Former President, Saitama University  
TOWATARI Hayashi / Managing Director / Director-General, JANU  
ANAZAWA Makoto / President, Otaru University of Commerce  
OKUDA Kiyoshi / President, Obihiro University of Agriculture and Veterinary Medicine  
FUKUDA Shinsaku / President, Hirosaki University  
MASU Kazuya / President, Tokyo Institute of Technology  
MUROFUSHI Kimiko / President, Ochanomizu University  
TOKUHISA Takeshi / President, Chiba University  
HAMADA Kunihiro / President, Shinshu University  
MATSUO Seiichi / Chancellor, Tokai National Higher Education and Research System  
IDA Ryuichi / President, Shiga University  
YAMAGIWA Juichi / President, Kyoto University  
ITOH Chihiro / President, Wakayama University  
HATTORI Yasunao / President, Shimane University  
OCHI Mitsuo / President, Hiroshima University  
OKA Masaaki / President, Yamaguchi University  
KAKEHI Yoshiyuki / President, Kagawa University  
KUBO Chiharu / President, Kyushu University  
KOHNO Shigeru / President, Nagasaki University
- Auditors  
HASEBE Yuichi / President, Yokohama National University  
TADENUMA Koichi / President, Hitotsubashi University

### Special Adviser

- GONOKAMI Makoto / President, The University of Tokyo  
YAMAGIWA Juichi / President, Kyoto University

### Assistants to President

- HASEGAWA Mariko / President, The Graduate University for Advanced Studies, SOKENDAI  
MURAMATSU Takashi / President, Miyagi University of Education  
KOMADA Yoshihiro / President, Mie University  
MORISAKO Kiyotaka / President, Kyoto Institute of Technology  
OIE Yuji / President, Kyushu Institute of Technology  
FUJII Ryoichi / President, Research Organization of Information and Systems

# Objectives and Activities of JANU

- Objectives of JANU (Article 4 of the Articles of Incorporation)  
JANU shall contribute to the promotion of national university corporations and the improvement of standards of higher education and academic research in our nation with well-balanced development, creating the circumstances to ensure outstanding achievements conducted by national university corporations on various activities related to education, research and contribution to the society.
- Activities of JANU (Article 5 of the Articles of Incorporation)
  - (1) Activities necessary for national universities to promote high-quality education, academic research, and social contribution
  - (2) Studies and research necessary for universities' voluntary policy-making activities as well as for proposals concerning the national government's policies on higher education, academic research, etc.
  - (3) International exchange programs based on international partnership
  - (4) Support for the management and administration of national university corporations
  - (5) Other activities necessary for achieving the objectives of JANU

## Major Activities in FY 2019

### General Assembly meetings and Board of Directors meetings

Ordinary General Assembly meetings (Jun., Nov., Jan., Mar.)  
Board of Directors meetings (Apr., May, Jul., Oct., Dec., Feb.)



Written request submitted to Mr. HAGIUDA Koichi, MEXT Minister

### Request and proposal activities

- Released "What Objective Indicators Regarding Education and Research by National Universities Should Be in the Fourth Medium-Term Goals Period (Summary of Issues)". (Jun.)
- Released "The President's Comments on the National University Reform Plan "(Jun.)
- Submitted "Requests Regarding and Securing a Sufficient National University-related Budget and Tax Revisions for Fiscal Year 2020".(Sep., Oct.)
- Responses to postponement of the "University Entrance Examination English Score Provision System" and " Description Type Questions in the Nationwide University Entrance Examinations Framework "(Nov.~)
- Released "Resolution on Boosting Education and Research Capabilities in Japan" (Nov.)
- Released "Utilization of Common Indicators in the Distribution of Management Expenses Grants in Fiscal Year 2020 (Summary of Concept)" (Nov.)
- Published Joint Statement on "Internship Programs Respecting Study Time and University Experience"(Mar.)
- Released "National University Corporation Governance Code"(Mar.)
- Joint Proposed Industry-University Committee Report on the Future of Recruitment and University Education "University Education and Recruitment toward the Age of Society 5.0"(Mar.)



Japan-Australia University Dialogue2019



Publication of the National Universities magazine and other reports

### International activities

- The 1st SEAMEO RIHED-JANU Seminar and Study Visit to Japan(Jun.)
- UK-Japan University Dialogue 2019(Jun.)
- Japan - Australia University Dialogue 2019(Oct.)

### Seminars and training sessions

Liaison Meeting for Board Members of National Universities (Jun., Oct.), Training Session for Section/Department Managers of National Universities (Jul.), Workshop for National University General Insurance (Jul.), "Top Seminar" (Aug.), University·Design·Workshop (Aug.), Study Session for Public Relations (Sep.), University Reform Symposium (Nov.), University Management Seminar (Nov.), Study Session for Young Staff of National Universities (Dec.), Seminar for Newly Appointed Presidents (Feb.)

### Publication and public relations

Public relations magazine "National Universities" published (Jul., Sep., Dec., Mar.)  
Extra issue of the public relations magazine "National Universities" published (Jul.)  
Discussion meeting with editorial writers held (Oct.)