



A Plan to Enhance Research Collaborations and Student Mobility between Wakayama University and the UK

ITOH Chihiro, Prof. Dr.
President, Wakayama University

Contents

- ❖ Overview of Wakayama University (WU)
- ❖ Status and challenges of mobility exchange at WU
- ❖ Status and challenges of research collaborations at WU
- ❖ WU CoCONNECT as our core strategy

Introduction of Wakayama University

Established in 1949

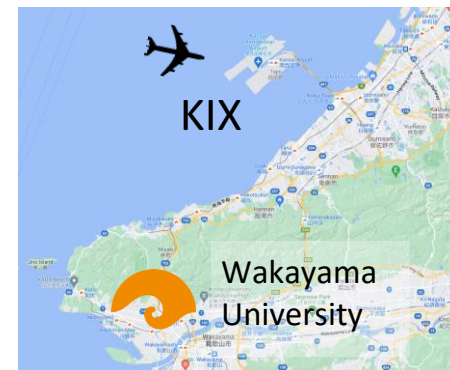


4,478 students

Including post grad students



267 Researchers
136 Administrative staff



Faculty of Education

Teacher training

- Elementary
- Secondary
- Special education



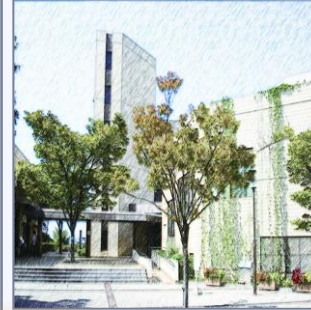
UG



MC

Faculty of Economics

- Global Business & Economy
- Business Accounting & Tax Law
- Company Analysis & Evaluation
- Regional Public Policy & Public Benefit Service
- Business Design
- Economy & Sustainability



UG



MC



- Tourism Management
- Regional Revitalization
- Tourism & Culture



UG



MC



DC

Faculty of Tourism

- Pure & Applied Natural Science
- Informatics
- Environmental Engineering
- Mechatronics
- Media Design
- Network Information



UG



MC



DC

Faculty of Systems Engineering

Status of student mobility exchange at WU

- ❖ Student mobility accompanied research collaborations
- ❖ International partners
46 institutions in 18 countries
- ❖ International students at WU
From 12 countries, 141 students
- ❖ Partner University in the UK
University of Central Lancashire (2016.2.29 -)
Incoming students: 5, Outgoing students : 1
- ❖ Global Intensive Project in the UK (2010-2018)
Hertford college, University of Oxford
Outgoing students: 90 from Faculty of Tourism

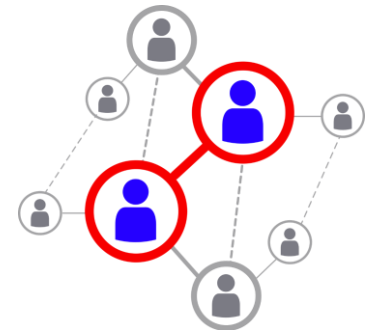


Challenges of mobility exchange

- ✓ Financial constraints
- ✓ Language differences
- ✓ Potential loneliness at the new destination
- ✓ A lack of self-confidence or maturity to try new experiences

Status of research collaborations at WU

- ❖ Collaborations between the UK and WU were mainly focused on tourism research
- ❖ Current and past collaborations: University of Surrey, University of Central Lancashire, Edinburgh Napier University, Durham University, Newcastle University
- ❖ Research collaborations based on personal relationships
- ❖ Close collaborations on specific topics



Challenges of research collaborations

- ✓ Research collaborations without expansion
- ✓ Difficulties of lateral expansion
- ✓ Large reduction in research collaborations because of COVID-19 and its related issues



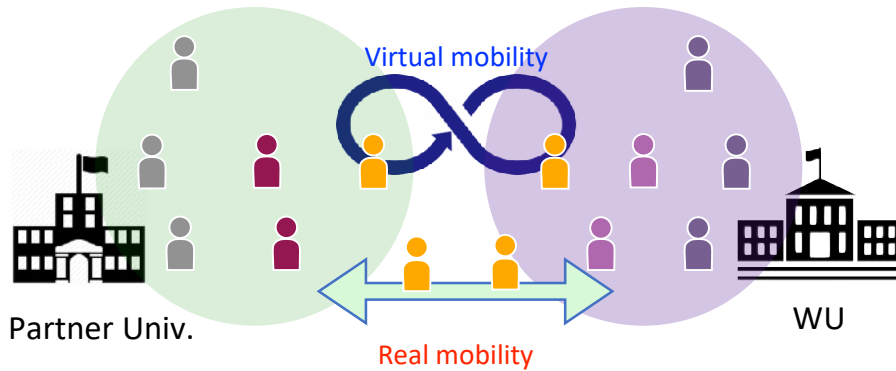
Activate international relations as Wakayama University

WU International



WU CoCONNECT as our core strategy

Wakayama University Collaborative Nihongo and Nippon studies Education for Connecting Together



WU CoCONNECT is to create an international community with an in-depth understanding and appreciation of different cultures and values by combining **virtual** and **real** mobility. Students are connected across borders and nationalities through **Japanology studies**, and through unique on and off campus international experiences. WU is dedicated to helping students experience the world and establish a solid foundation as true international communicators.

Outcomes for **Outgoing** Students

- ✓ Develop expertise in intercultural communication through an in-depth understanding of Japan and Japanese culture

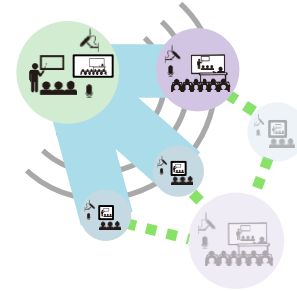
Outcomes of **Incoming** Students

- ✓ Work as a cultural ambassador all around the world with Japanese

Steps of WU CoCONNECT

Step 1: Further the international relations using ICT

- Collaborative Online International Learning
- Japanese speech contest via online
- Online communication



Step 2: Substantiation of Japanology by short-term certification program

- Rural stay in Wakayama, which has rich natural and historic resources
- Living experience in Japanese culture
- Communication between Japanese and British students



Goal: Lateral Expansion of the program and Enhancing partners in the UK

- Enhancing research collaboration in Japanology
- Expanding the initiative to other scientific field and also other counties
- Mutual exchange of students



Thank you for your attention

