

The Japan Association of
National Universities

2025



The Japan Association of
National Universities

Message from the President



JANU President
FUJII Teruo (The University of Tokyo)

National universities in Japan have an important responsibility to serve as the centers of knowledge that support the development of the country. We will continue our efforts to keep creating new knowledge and strengthen our activities while engaging in dialogue with various members of society, including individuals in Japan, so that national universities as a whole can contribute to enhancing the national sum of knowledge.

Today, Japan faces various challenges, including a rapid population decline and decreasing industrial competitiveness. Overcoming these challenges, and achieving well-being for All of the people in Japan requires us to raise the overall national level of knowledge, promote cutting-edge research that leads to industrial innovation, and take an active part in regional revitalization and invigoration.

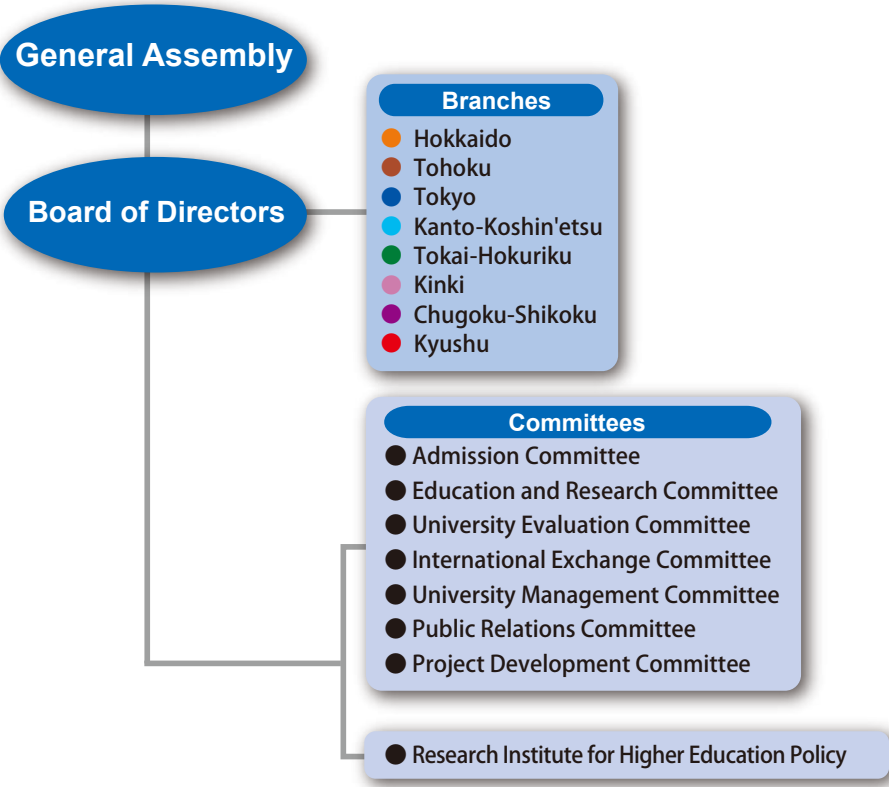
To achieve these, in March 2025, the Japan Association of National Universities (JANU) announced “The Future Vision of Japan’s National Universities”, envisioning our path toward 2040. This vision expresses the determination of all 85 national universities, which have developed as the centers of knowledge around the country, to unite to form a national university system and implement necessary measures to tackle the challenge of creating an innovative Japanese society.

Specifically, those measures include 1) increasing the percentages of students advancing to higher education in provincial areas and among women, as well as increasing the percentage of international students to 30% of each university’s maximum number of students to introduce a diverse range of talent from around the world; 2) tripling the number of doctoral recipients, who are expected to lead pioneering research at a global level and work as key players in a variety of fields; 3) playing a leading role in regional revitalization while promoting interuniversity collaboration; 4) improving research environments and the treatment of researchers at university hospitals while enhancing the quality of teacher training; 5) expanding the overall pool of researchers and enhancing their research environments; 6) raising the overall level of higher education through collaboration between national, public, and private universities, promoting the active participation of women, and realizing an inclusive society for all people, including those with disabilities.

To fulfill our determination to implement these measures, we will work to ensure sincere and thorough discussions among national universities and between national universities and stakeholders around Japan. We are determined to maximize the expected roles and current functions of the entire national university system while taking advantage of the distinctive features of the respective universities.

In conclusion, we would like to emphasize that the value of national universities lies in their capabilities to contribute to social development and the happiness of people and that the primary beneficiaries of their activities, including education and research, are the nation and its people as a whole. We hope to further enrich our communication with various members of society, including individuals in Japan, to gain their understanding of the activities of national universities. We request that you support and cooperate with us as a form of future-oriented investment in advancement of Japanese society.

Organization Chart



Governance

(As of June 25, 2025)

Board Members

- Members of the Board
 - FUJII Teruo / President / President, The University of Tokyo
 - HOUKIN Kiyohiro / Vice President / President, Hokkaido University
 - OCHI Mitsuo / Vice President / President, Hiroshima University
 - UMEHARA Izuru / Vice President / President, Yokohama National University
 - KINA Ikue / Vice President / President, University of the Ryukyus
 -
 - HAYASHI Kayoko / Senior Managing Director / Former President, Tokyo University of Foreign Studies
 - MURATA Yoshinori / Managing Director / Director-General, JANU
 -
 - NAGATA Kyosuke / Adviser / President, University of Tsukuba
 - MATSUDA Mizushi / President, Muroran Institute of Technology
 - TOMINAGA Teiji / President, Tohoku University
 - MIURA Hiroki / President, Fukushima University
 - OHTAKE Naoto / President and Chief Executive Officer (CEO), Institute of Science Tokyo
 - SASAKI Yasuko / President, Ochanomizu University
 - YOKOTE Koutarou / President, Chiba University
 - MATSUO Seiichi / Chancellor, Tokai National Higher Education and Research System
 - WADA Takashi / President, Kanazawa University
 - ITO Masaaki / President, Mie University
 - MINATO Nagahiro / President, Kyoto University
 - KUMANOGOH Atsushi / President, The University of Osaka
 - SHIOZAKI Kazuhiro / President, Nara Institute of Science and Technology
 - SAKO Hidekazu / President, Naruto University of Education
 - ISHIBASHI Tatsuro / President, Kyushu University
 - OGAWA Hisao / President, Kumamoto University
 - SAMESHIMA Hiroshi / President, University of Miyazaki
 - NAGATA Takashi / President, The Graduate University for Advanced Studies
 - OKAMOTO Ikuko / President, Osaka Kyoiku University
 - NASU Yasutomo / President, Okayama University
- Auditors
 - HARUNA Nobuo / President, Tokyo University of Foreign Studies
 - UKEDA Hiroyuki / President, Kochi University

Assistants to President

- HASEYAMA Akira / Chancellor, Hokkaido Higher Education and Research System
- MINAMIYA Yoshihiro / President, Akita University
- TANO Shun-ichi / President, The University of Electro-Communications
- NAKAMURA Kazuhiko / President, University of Yamanashi
- OBATA Makoto / President, Nagoya Institute of Technology
- TAKEMURA Akimichi / President, Shiga University
- KAWAI Maki / President, National Institutes of Natural Sciences

Objectives and Activities of JANU

Objectives of JANU (Article 4 of the Articles of Incorporation)

JANU shall contribute to the promotion of national university corporations and the improvement of standards of higher education and academic research in our nation with well-balanced development, creating the circumstances to ensure outstanding achievements conducted by national university corporations on various activities related to education, research and contribution to the society.

Activities of JANU (Article 5 of the Articles of Incorporation)

- (1) Activities necessary for national universities to promote high-quality education, academic research, and social contribution
- (2) Studies and research necessary for universities' voluntary policy-making activities as well as for proposals concerning the national government's policies on higher education, academic research, etc.
- (3) International exchange programs based on international partnership
- (4) Support for the management and administration of national university corporations
- (5) Other activities necessary for achieving the objectives of JANU

Major Activities in FY2024

General Assembly meetings and Board of Directors meetings

- General Assembly meetings (Jun., Nov., Jan., Mar.)
- Board of Directors meetings (Apr., May, Jul., Oct., Dec., Feb.)



The second Board of Directors meeting (Akita)

Request and proposal activities

- Issued the JANU Statement "Toward a Brilliant Future for Japan" (June)
- Announced the National Universities Global Leadership Action Plan (NUGLAP)—To Demonstrate Leadership in Co-creation in the International Community— (June)
- Submitted requests regarding the enhancement of a national-university-related budget in the FY2025 national budget and tax system reforms (Aug. and Dec.)
- Announced "The Future Vision of Japan's National Universities" (Mar.)

International Activities

- Cooperated in the Korea Japan University Presidents' Forum, an exchange program between Japan and South Korea (Seoul, South Korea) (May.)
- Joined the 2024 International Forum on Higher Education hosted by the China Association of Higher Education (Beijing, China) (Oct.)
- Signed an MOU on Exchange and Cooperation with Universities Canada (Nov.)
- The German Rectors' Conference (HRK) visited the Japan Association of National Universities (JANU) (Nov.)
- Attended the International Association of Universities (IAU) International Conference (Tokyo, Japan) (Nov.)
- Held the Australia–Japan Research and Collaboration Forum, an exchange program between Japan and Australia (Canberra, Australia) (Nov.)



Written request submitted to Mr. MORIYAMA Masahito, then MEXT Minister

Seminars and training sessions

- Liaison Meeting for Board Members of National Universities (Jun.)
- National University Corporation Department Managers' Training (Jul.)
- Seminars on the utilization of computer-based testing (CBT) for student selection and on the reduction of admission workload (July)
- "Top Seminar" (Aug.)
- University-Design-Workshop (Sep.)
- Liaison Meeting for Board Members of National Universities (Nov.)
- Study Session for Public Relations Personnel at National University Corporations (Nov.)
- Study Session for Young Staff of National Universities (Dec.)
- University Reform Symposium (Jan.)
- Seminar for Newly Appointed Presidents (Feb.)



Signed an MOU on Exchange and Cooperation with Universities Canada (Nov.)



Publication of the National Universities magazine and other reports

Publication and public relations

- Public relations magazine "National Universities" published (Jul., Nov., Mar.)
- Extra issue of the public relations magazine "National Universities" published (Jul.)
- Discussion meeting with editorial writers (Oct.)

Members of the JANU

●Regular Members (81 national university corporations,
85 national universities)

●Special Members (4 organizations)

National Institutes for the Humanities,
National Institutes of Natural Sciences,
High Energy Accelerator Research Organization,
Research Organization of Information and Systems

National sum of knowledge

Tokyo Branch

(11 national university corporations,
11 universities)

The University of Tokyo,
Tokyo University of Foreign Studies,
Institute of Science Tokyo,
Tokyo Gakugei University,
Tokyo University of Agriculture and Technology,
Tokyo University of the Arts,
Tokyo University of Marine Science and Technology,
Ochanomizu University,
The University of Electro-Communications,
Hitotsubashi University,
National Graduate Institute for Policy Studies

Kanto-Koshin'etsu Branch

(14 national university corporations,
14 universities)

Ibaraki University, University of Tsukuba,
Tsukuba University of Technology, Utsunomiya University,
Gunma University, Saitama University, Chiba University,
Yokohama National University,
The Graduate University for Advanced Studies, SOKENDAI,
Niigata University, Nagaoka University of Technology,
Joetsu University of Education,
University of Yamanashi, Shinshu University

Tokai-Hokuriku Branch

(11 national university corporations, 12 universities)

University of Toyama, Kanazawa University,
Japan Advanced Institute of Science and Technology,
University of Fukui,
Shizuoka University,
Hamamatsu University School of Medicine,
Tokai National Higher Education and Research System, Gifu University,
Tokai National Higher Education and Research System, Nagoya University,
Aichi University of Education,
Nagoya Institute of Technology,
Toyohashi University of Technology,
Mie University

Chugoku-Shikoku Branch

(10 national university corporations,
10 universities)

Tottori University, Shimane University,
Okayama University, Hiroshima University, Yamaguchi University,
Tokushima University, Naruto University of Education,
Kagawa University, Ehime University,
Kochi University

Kyushu Branch

(11 national university corporations,
11 universities)

University of Teacher Education Fukuoka, Kyushu University,
Kyushu Institute of Technology,
Saga University, Nagasaki University,
Kumamoto University, Oita University,
University of Miyazaki, Kagoshima University,
National Institute of Fitness and Sports in Kanoya,
University of the Ryukyus

Hokkaido Branch

(5 national university corporations,
7 universities)

Hokkaido University,
Hokkaido University of Education,
Muroran Institute of Technology,
Hokkaido Higher Education and Research
System, Otaru University of Commerce,
Hokkaido Higher Education and Research
System, Obihiro University of Agriculture
and Veterinary Medicine,
Hokkaido Higher Education and Research
System, Kitami Institute of Technology
Asahikawa Medical University

Tohoku Branch

(7 national university corporations,
7 universities)

Hirosaki University,
Iwate University,
Tohoku University,
Miyagi University of Education,
Akita University,
Yamagata University,
Fukushima University

Kinki Branch

(12 national university corporations,
13 universities)

Shiga University,
Shiga University of Medical Science,
Kyoto University,
Kyoto University of Education,
Kyoto Institute of Technology,
Osaka University,
Osaka Kyoiku University,
Hyogo University of Teacher Education,
Kobe University,
Nara National Institute of Higher Education
and Research, Nara University of Education,
Nara National Institute of Higher Education
and Research, Nara Women's University,
Nara Institute of Science and Technology,
Wakayama University

Access



Directions

By subway

3-minutes walk from Jimbocho Station, Exit A8
Take Hanzomon Line (Tokyo Metro), Mita Line (Toei),
or Shinjuku Line (Toei)
4-minutes walk from Takebashi Station, Exit 1B
Take Tozai Line (Tokyo Metro)

By car

Take Metropolitan Expressway and get off at Daikancho
Exit, Kandabashi Exit or Hitotsubashi Exit.



The Japan Association of
National Universities

<https://www.janu.jp/>